

WAAS CH 53339 W28A	APP CRS 277°	Rwy Idg TDZE Apt Elev	3807 350 355
----------------------------------------	------------------------	-----------------------------	-----------------------------------------

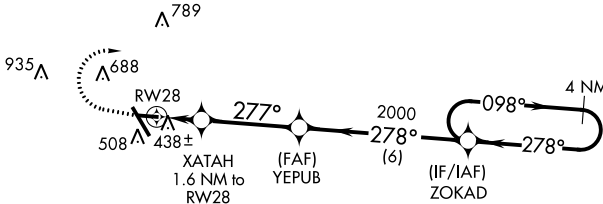
RNAV (GPS) RWY 28

HENRY TIFT MYERS (TMA)

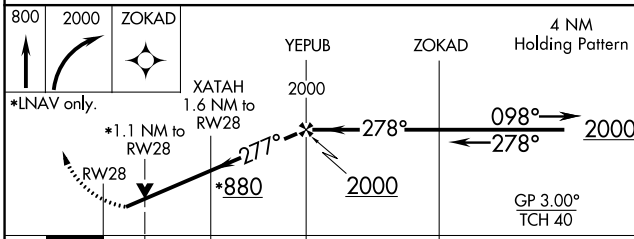
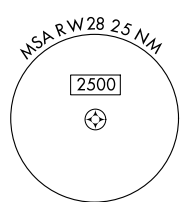
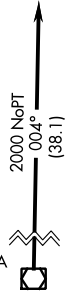
⚠ For uncompensated Baro-VNAV systems, LNAV/VNAV NA below -1.5°C (5°F) or above 54°C (130°F). Baro-VNAV and VDP NA when using Moultrie altimeter setting. DME/DME RNP-0.3 NA. When local altimeter setting not received, use Moultrie altimeter setting; increase LPV DA to 673 feet and LNAV/VNAV DA to 689 feet and all MDA 80 feet; increase LPV all Cats and LNAV/VNAV all Cats visibility 1/8 mile, LNAV Cat C/D visibility 1/4 mile, and increase Circling Cat C visibility 1/4 mile. Straight-in minimums NA at night. Circling Rwy 10 NA at night. Helicopter visibility reduction below 3/4 SM NA.

MISSED APPROACH: Climb to 800 then climbing right turn to 2000 direct ZOKAD and hold.

AWOS-3PT 118.525	VALDOSTA APP CON ★ 126.6 285.6	UNICOM 122.7 (CTAF) 0
----------------------------	------------------------------------------	---------------------------------



Procedure NA for arrivals at OTK VOR/DME on V579 southbound.



ELEV 355	TDZE 350
----------	----------

CATEGORY	A	B	C	D
LPV DA		604-1	254 (300-1)	
LNAV/VNAV DA		628-1	278 (300-1)	
LNAV MDA		720-1	370 (400-1)	
C CIRCLING	920-1 565 (600-1)	1060-1 705 (800-1)	1060-2 705 (800-2)	1240-3 885 (900-3)

HIRL Rwy 16-34 0

SE-4, 26 DEC 2024 to 23 JAN 2025

SE-4, 26 DEC 2024 to 23 JAN 2025