

WAAS CH 48921 W17A	APP CRS 175°	Rwy Idg TDZE 840 Apt Elev 845	5014 840 845
--	------------------------	---	---

RNAV (GPS) RWY 17

ARDMORE DOWNTOWN EXEC (1F)(0)

RNP APCH-GPS.

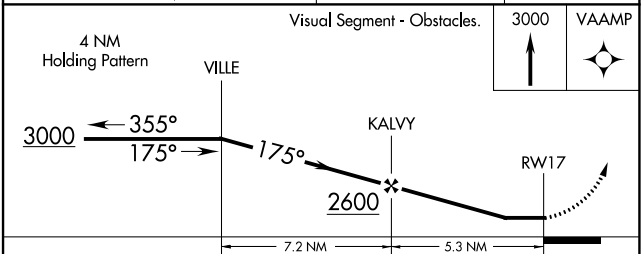
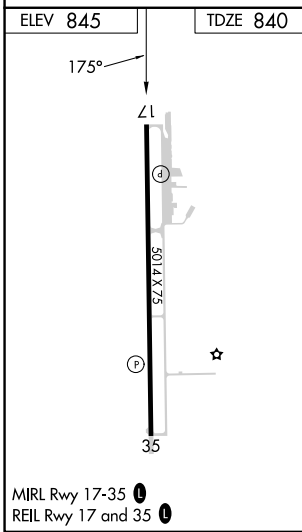
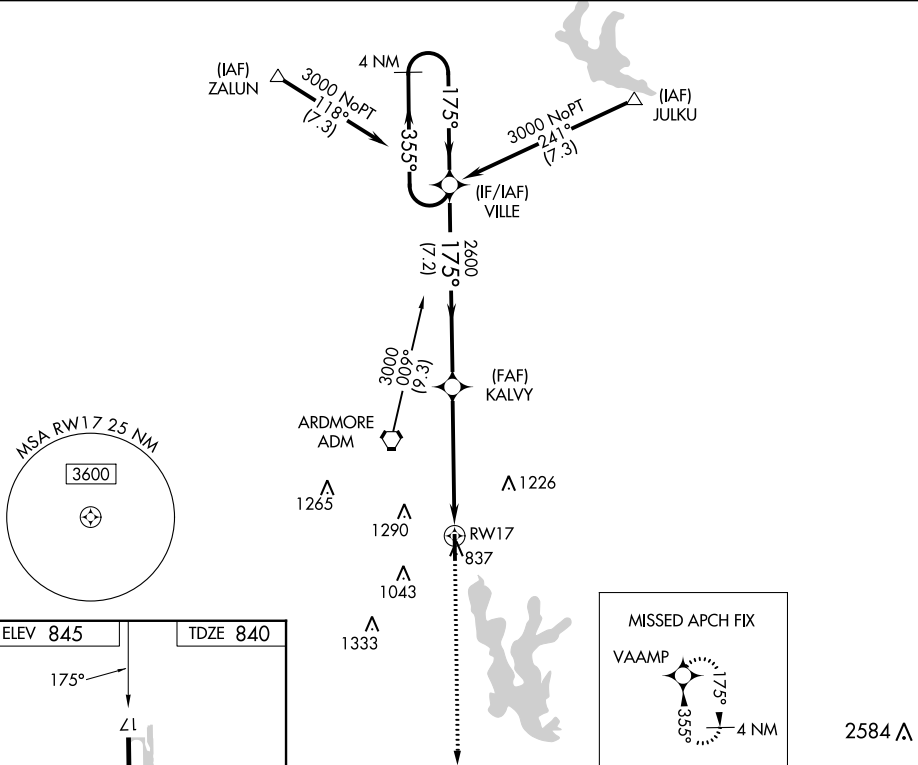
⚠ Rwy 17 helicopter visibility reduction below 1 SM NA.

MISSED APPROACH: Climb to 3000
direct VAAMP and hold.

AWOS-3
118.15

FORT WORTH CENTER
124.75 323.0

UNICOM
122.7 (CTAF) 0



CATEGORY	A	B	C	D
LP MDA	1360-1	520 (600-1)	1360-1½	520 (600-1½)
LNVA MDA	1360-1	520 (600-1)	1360-1½	520 (600-1½)
CIRCLING	1400-1	555 (600-1)	1600-2¼ 755 (800-2¼)	1640-2½ 795 (800-2½)

SC-1, 26 DEC 2024 to 23 JAN 2025

SC-1, 26 DEC 2024 to 23 JAN 2025