

WAAS CH 62921 W35A	APP CRS 355°	Rwy Idg TDZE 845 Apt Elev 845	5014 845 845
--	------------------------	---	---

RNAV (GPS) RWY 35

ARDMORE DOWNTOWN EXEC (1F⁽⁰⁾)

RNP APCH-GPS.

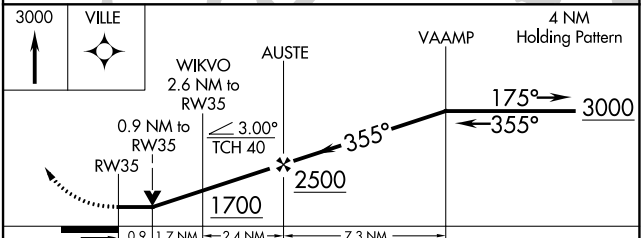
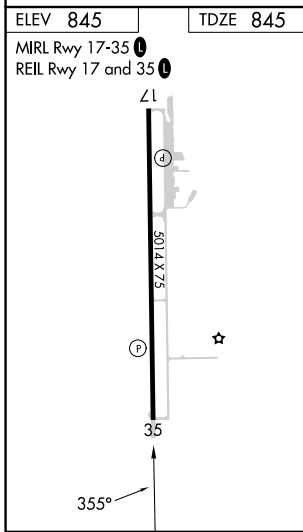
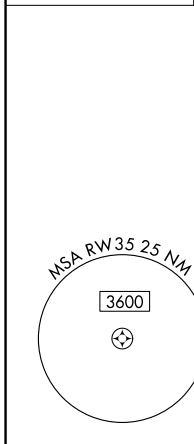
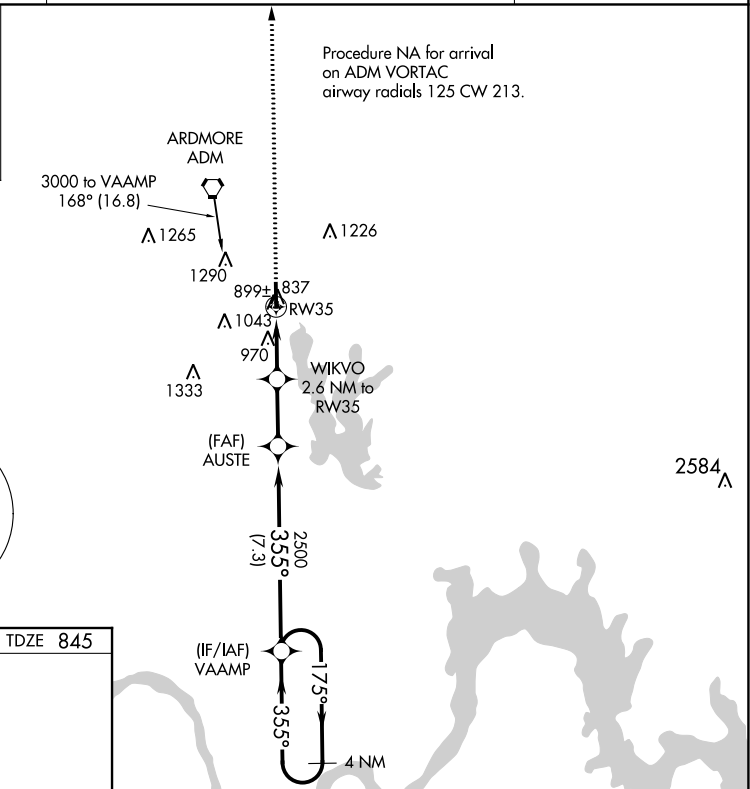
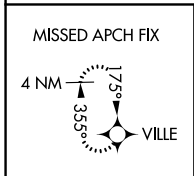
⚠ Rwy 35 helicopter visibility reduction below 3/4 SM NA.

MISSED APPROACH: Climb to 3000 direct VILLE and hold.

AWOS-3
118.15

FORT WORTH CENTER
124.75 323.0

UNICOM
122.7 (CTAF) 0



CATEGORY	A	B	C	D
LP MDA		1200-1	355 (400-1)	
LNAV MDA		1220-1	375 (400-1)	
CIRCLING	1400-1	555 (600-1)	1600-2 1/4 755 (800-2 1/4)	1640-2 1/2 795 (800-2 1/2)

SC-1, 26 DEC 2024 to 23 JAN 2025

SC-1, 26 DEC 2024 to 23 JAN 2025