

(LINDY8.STL) 24025

# LINDBERGH EIGHT DEPARTURE

AL-5400 (FAA)

SPIRIT OF ST LOUIS (STLS)  
ST. LOUIS, MISSOURI

ATIS  
134.8  
CLNC DEL  
133.1  
CLNC DEL  
121.7 (when twr closed)  
GND CON  
121.7  
SPIRIT TOWER ★  
124.75 257.2  
ST LOUIS DEP CON  
126.5 254.3

**TOP ALTITUDE:  
(JETS) 3000/(PROPS) 2500**

ST. LOUIS  
117.4 STL  
Chan 121

VICHY  
117.7 VIH  
Chan 124

FARMINGTON  
115.7 FAM  
Chan 104

LITTLE ROCK  
113.9 LIT  
Chan 86

WALNUT RIDGE  
114.5 ARG  
Chan 92

### TAKEOFF MINIMUMS

Rwys 8L, 26R: Standard.

Rwy 8R: 200-1¼ or standard with minimum climb of 238' per NM to 700.

Rwy 26L: 300-2 or standard with minimum climb of 231' per NM to 900.

NOTE: DME and RADAR required.

(CONTINUED ON FOLLOWING PAGE)

NOTE: Chart not to scale.

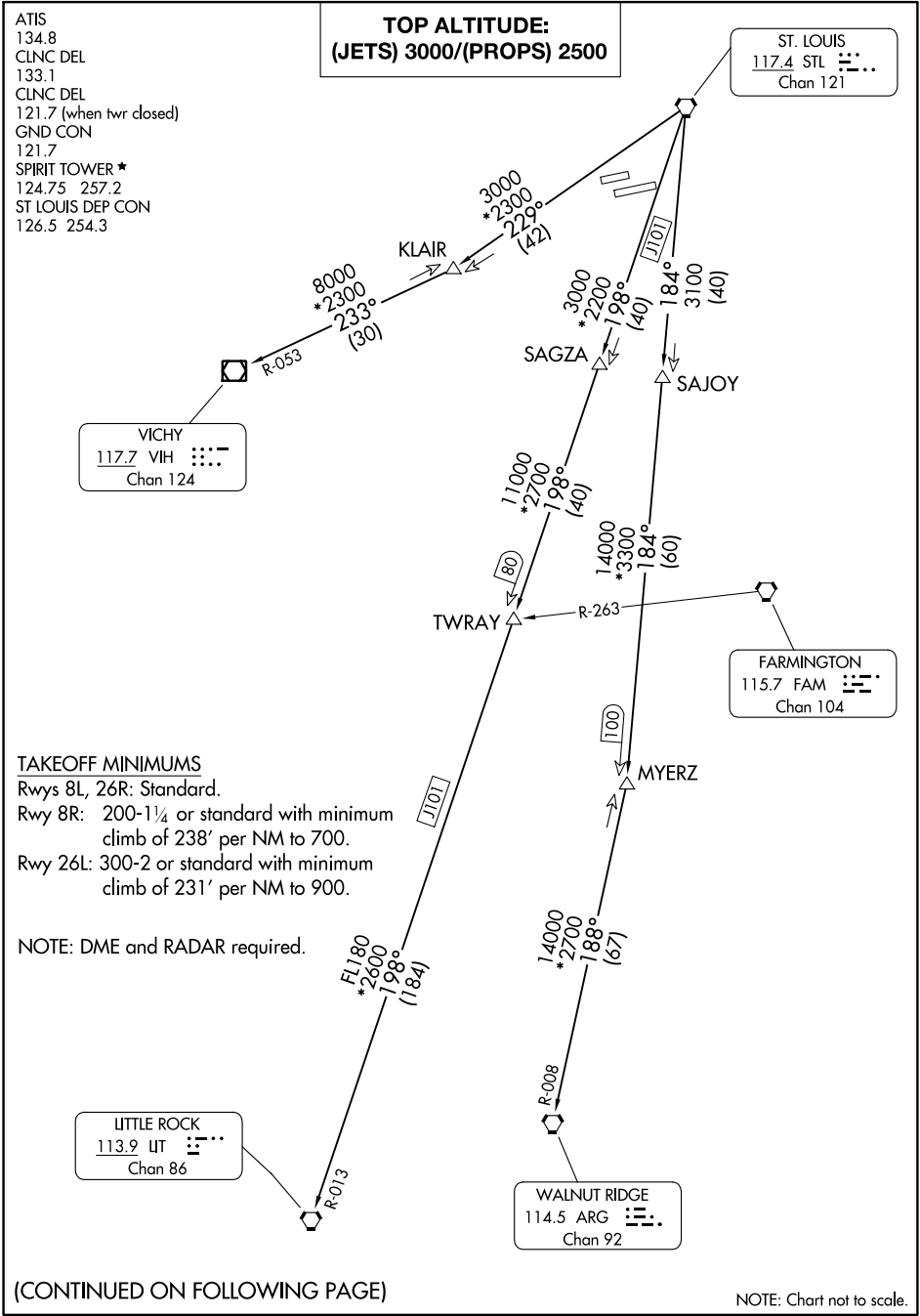
# LINDBERGH EIGHT DEPARTURE

(LINDY8.STL) 17JUN21

ST. LOUIS, MISSOURI  
SPIRIT OF ST LOUIS (STLS)

NC-3, 26 DEC 2024 to 23 JAN 2025

NC-3, 26 DEC 2024 to 23 JAN 2025





DEPARTURE ROUTE DESCRIPTION

Climb on assigned heading for vector to appropriate route.

JETS: Maintain 3000 or assigned altitude, thence . . . .

PROPS: Maintain 2500 or assigned altitude, thence . . . .

. . . . (transition). Expect filed altitude 10 minutes after departure.

LITTLE ROCK TRANSITION (LINDY8.LIT): From over STL VORTAC on STL R-198 to TWRAY, then on STL R-198 and LIT R-013 to LIT VORTAC.

MYERZ TRANSITION (LINDY8.MYERZ): From over STL VORTAC on STL R-184 to MYERZ.

VICHY TRANSITION (LINDY8.VIH): From over STL VORTAC on STL R-229 to KLAIR, then on VIH R-053 to VIH VOR/DME.

WALNUT RIDGE TRANSITION (LINDY8.ARG): From over STL VORTAC on STL R-184 to MYERZ, then on ARG R-008 to ARG VORTAC.

NC-3, 26 DEC 2024 to 23 JAN 2025

NC-3, 26 DEC 2024 to 23 JAN 2025