

WAAS CH 61114 W08B	APP CRS 079°	Rwy Idg TDZE 462 Apt Elev 463	7414
--	------------------------	---	-------------

RNAV (GPS) RWY 8R

SPRIT OF ST LOUIS (SUS)

RNP APCH - GPS.

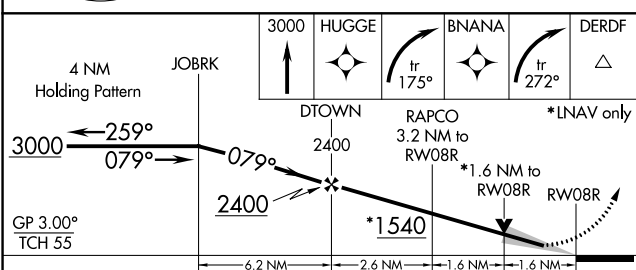
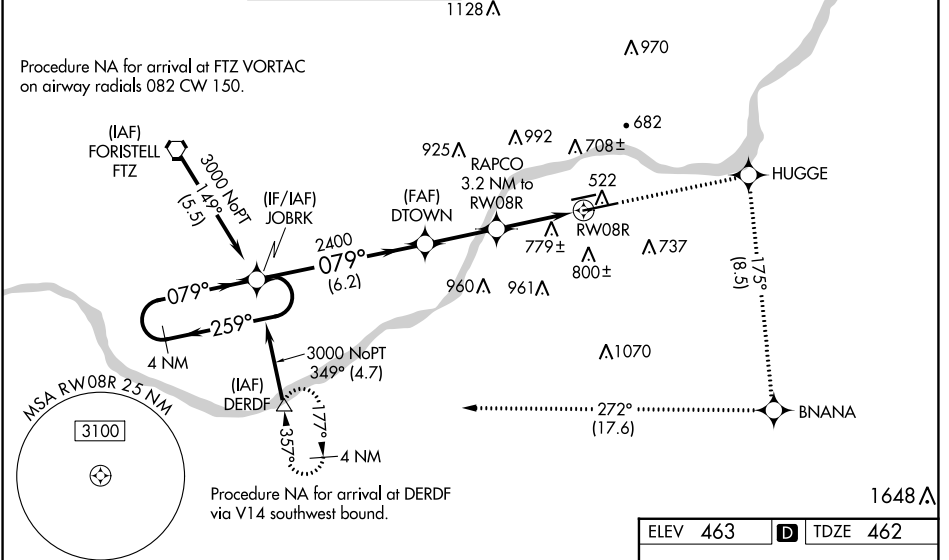
⚠ For uncompensated Baro-VNAV systems, LNAV/VNAV NA below -15°C or above 54°C. Baro-VNAV and VDP NA when using St Louis Lambert Intl altimeter setting. When local altimeter setting not received, use St Louis Lambert Intl altimeter setting and increase all DA 57 feet all MDA 60 feet, increase visibility LNAV/VNAV all Cats and LNAV Cats C/D 1/8 mile, and Circling Cat C 1/4 mile. For inop MALS, increase LNAV/VNAV all Cats visibility to 2 1/2 mile and LNAV Cats C/D visibility to 1 1/2 mile. For inop MALS when using St Louis Lambert Intl altimeter setting, increase LNAV Cats C/D visibility to 1 3/4 mile.

*RVR 1800 authorized with use of FD or AP or HUD to DA, NA when using St Louis Lambert Intl altimeter setting.

MALS

MISSED APPROACH:
Climb to 3000 direct HUGGE and right turn on track 175° to BNANA and right turn on track 272° to DERDF and hold.

ATIS 134.8	ST. LOUIS APP CON 126.5 254.3	SPRIT TOWER* 124.75 (CTAF) 0 257.2	GND CON 121.7	CLNC DEL 133.1	ST. LOUIS CLNC DEL 121.7 (when tower closed)	UNICOM 122.95
----------------------	---	--	-------------------------	--------------------------	---	-------------------------



ELEV 463	TDZE 462
----------	----------

MIRL Rwy 8L-26R
HIRL Rwy 8R-26L

CATEGORY	A	B	C	D
LPV DA#		662/24	200 (200-1/2)	
LNAV/VNAV DA		1129-1 7/8	667 (700-1 7/8)	
LNAV MDA	1040/24	578 (600-1/2)	1040-1 1/4	578 (600-1 1/4)
CIRCLING	1100-1 637 (700-1)	1140-1 677 (700-1)	1160-2 697 (700-2)	1360-3 897 (900-3)

NC-3, 26 DEC 2024 to 23 JAN 2025

NC-3, 26 DEC 2024 to 23 JAN 2025