

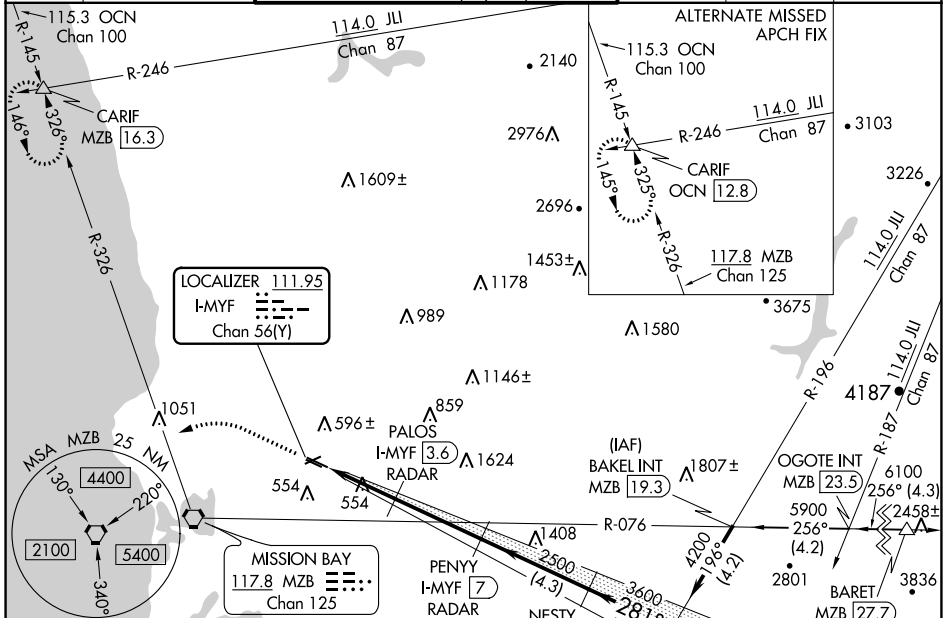
LOC/DME I-MYF 111.95 Chan 56(Y)	APP CRS 281°	Rwy Idg 3399 TDZE 423 Apt Elev 427
---	------------------------	---

ILS or LOC RWY 28R

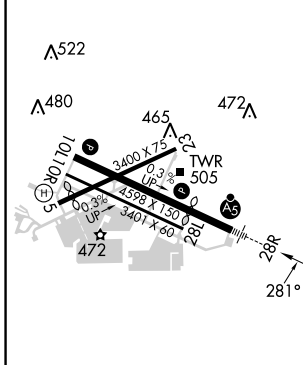
MONTGOMERY-GIBBS EXEC (MYF)

DME or RADAR required.		MALSR	MISSED APPROACH: Climb to 1100 then climbing left turn to 3000 on heading 270° and MZB VORTAC R-326 to CARIF INT/MZB 16.3 DME and hold.		
Circling Rwy 10L, 23, 28L NA at night. Rwy 28R helicopter visibility reduction below 3/4 SM NA. Inop table does not apply to S-ILS all Cats. For inop ALS, increase S-LOC 28R all Cats visibility to 1 SM.					

ATIS 126.9	SOCAL APP CON 124.35 279.625	MONTGOMERY TOWER * 119.2 (CTAF) 0 269.4 (Rwys 5, 10L/R, 23, 28L) 125.7 269.4 (Rwy 28R)	GND CON 118.225	CLNC DEL 123.725	UNICOM 123.075
----------------------	--	---	---------------------------	----------------------------	--------------------------



ELEV 427	TDZE 423
-----------------	-----------------



REIL Rwy 28L
MIRL Rwy 10L-28R

FAF to MAP 6.3 NM

Knots	60	90	120	150	180
Min:Sec	6:18	4:12	3:09	2:31	2:06

1100	3000	MZB R-326	CARIF	MIBBY INT I-MYF 14.5
↑	hdg 270°			JJI 29.6
* LOC only		PENNY I-MYF 7	NESTY I-MYF 11.2	
		RADAR	RADAR	
		PALOS I-MYF 3.6		
		RADAR		
		2500	281°	4200
		I-MYF 0.7	* I-MYF 1.8	
				GS 3.00°
				TCH 41
		1.1 NM	1.8 NM	3.4 NM
			4.3 NM	3.3 NM
CATEGORY	A	B	C	D
S-ILS 28R	673-3/4	250 (300-3/4)		NA
S-LOC 28R	820-3/4	397 (400-3/4)		NA
CIRCLING	920-1	493 (500-1)		NA

SW-3, 26 DEC 2024 to 23 JAN 2025

SW-3, 26 DEC 2024 to 23 JAN 2025