

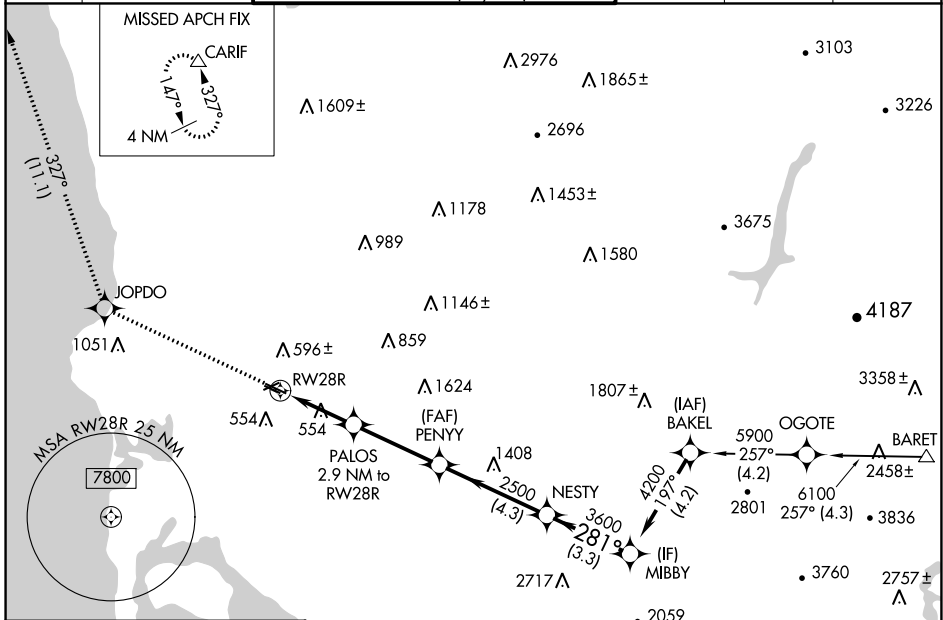
WAAS CH <b>45710</b> <b>W28A</b>	APP CRS <b>281°</b>	Rwy Idg TDZE Apt Elev	<b>3399</b> <b>423</b> <b>427</b>
--	------------------------	-----------------------------	---

# RNAV (GPS) RWY 28R

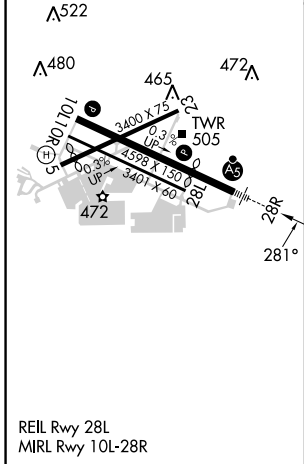
MONTGOMERY-GIBBS EXEC (M.Y.F.)

RNP APCH.		MALSR	MISSED APPROACH: Climb to 3000 direct JOPDO and on track 327° to CARIF and hold.		
<p>▼ Rwy 28R helicopter visibility reduction below 3/4 SM NA.</p> <p>▲ For uncompensated Baro-VNAV systems, LNAV/VNAV NA below -15°C or above 54°C.</p>					

ATIS <b>126.9</b>	SOCAL APP CON <b>124.35 279.625</b>	MONTGOMERY TOWER ★ <b>119.2</b> (CTAF) <b>0 269.4</b> (Rwys 5, 10L/R, 23, 28L) <b>125.7 269.4</b> (Rwy 28R)	GND CON <b>118.225</b>	CLNC DEL <b>123.725</b>	UNICOM <b>123.075</b>
----------------------	--	---	---------------------------	----------------------------	--------------------------



ELEV <b>427</b>	TDZE <b>423</b>
-----------------	-----------------



3000	JOPDO	tr 327°	CARIF				
*LNAV only				PALOS 2.9 NM to RWY28R	PENNY 2500	NESTY 3600	MIBBY 4200
	RWY28R	*1.2 NM to RWY28R					GP 3.00° TCH 41
		1.2 NM	1.7 NM	3.4 NM	4.3 NM	3.3 NM	

	CATEGORY	A	B	C	D
LPV	DA	673-3/4	250 (300-3/4)		NA
LNAV/VNAV	DA	750-3/4	327 (400-3/4)		NA
LNAV	MDA	840-3/4	417 (500-3/4)		NA
	CIRCLING	920-1	493 (500-1)		NA

SW-3, 26 DEC 2024 to 23 JAN 2025

SW-3, 26 DEC 2024 to 23 JAN 2025