

WAAS CH 72904 W35A	APP CRS 348°	Rwy Idg 6501 TDZE 17 Apt Elev 17
--	------------------------	---

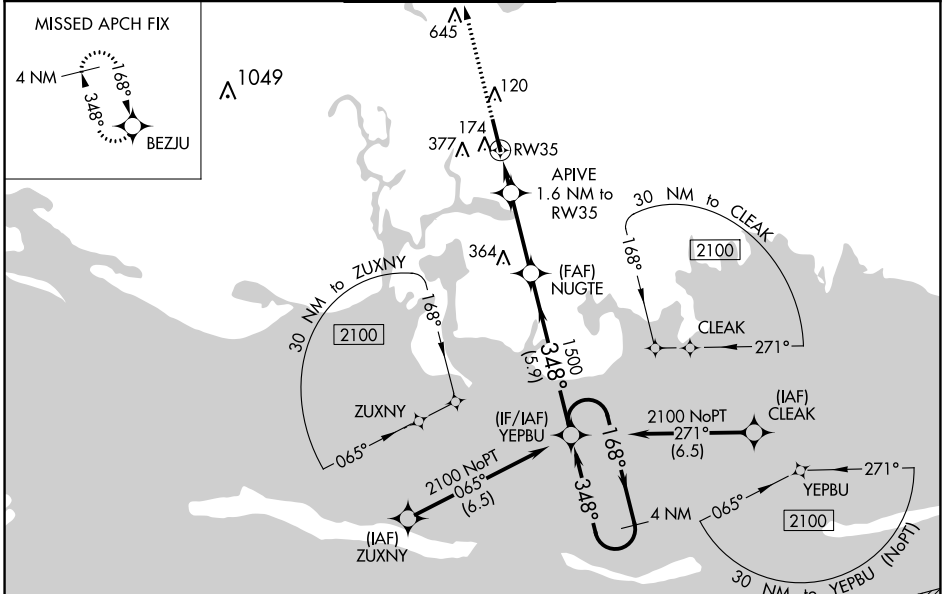
RNAV (GPS) RWY 35

TRENT LOTT INTL (PQL)

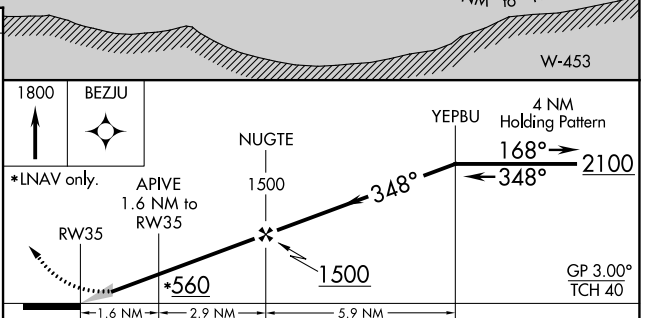
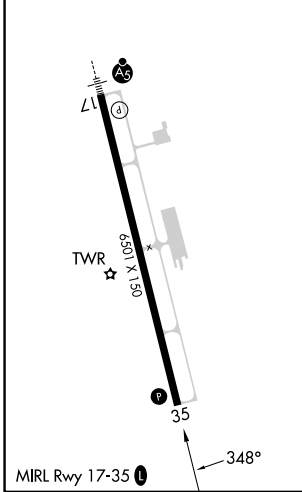
Baro-VNAV NA when using Mobile Rgnl altimeter setting. For uncompensated Baro-VNAV systems, LNAV/VNAV NA below -5°C (23°F) or above 54°C (130°F). DME/DME RNP-0.3 NA. When local altimeter setting not received, use Mobile Rgnl altimeter setting and increase LPV DA to 342 feet, LNAV/VNAV DA to 422 feet, and all MDA 80 feet; increase LPV and LNAV/VNAV visibility ¼ mile all Cts. Increase LNAV visibility Cts C/D ½ mile and Circling visibility Cts C/D ½ mile.

MISSED APPROACH: Climb to 1800 direct BEZJU and hold.

ATIS 135.175	MOBILE APP CON ★ 121.0 307.1	TRENT LOTT TOWER ★ 118.575 (CTAF)	GND CON 121.725	CLNC DEL 121.725	UNICOM 122.8
------------------------	--	---	---------------------------	----------------------------	------------------------



ELEV 17	TDZE 17
---------	---------



CATEGORY	A	B	C	D
LPV DA		267-7/8	250 (300-7/8)	
LNAV/VNAV DA		347-1/8	330 (400-1/8)	
LNAV MDA	440-1	423 (500-1)	440-1 1/4	423 (500-1 1/4)
CIRCLING	480-1 463 (500-1)	680-1 663 (700-1)	680-1 3/4 663 (700-1 3/4)	680-2 663 (700-2)

RNAV (GPS) RWY 35

SC-4, 26 DEC 2024 to 23 JAN 2025

SC-4, 26 DEC 2024 to 23 JAN 2025