

WAAS CH <b>40237</b> <b>W14A</b>	APP CRS <b>141°</b>	Rwy ldg TDZE Apt Elev	<b>3851</b> <b>1117</b> <b>1122</b>
--	------------------------	-----------------------------	---

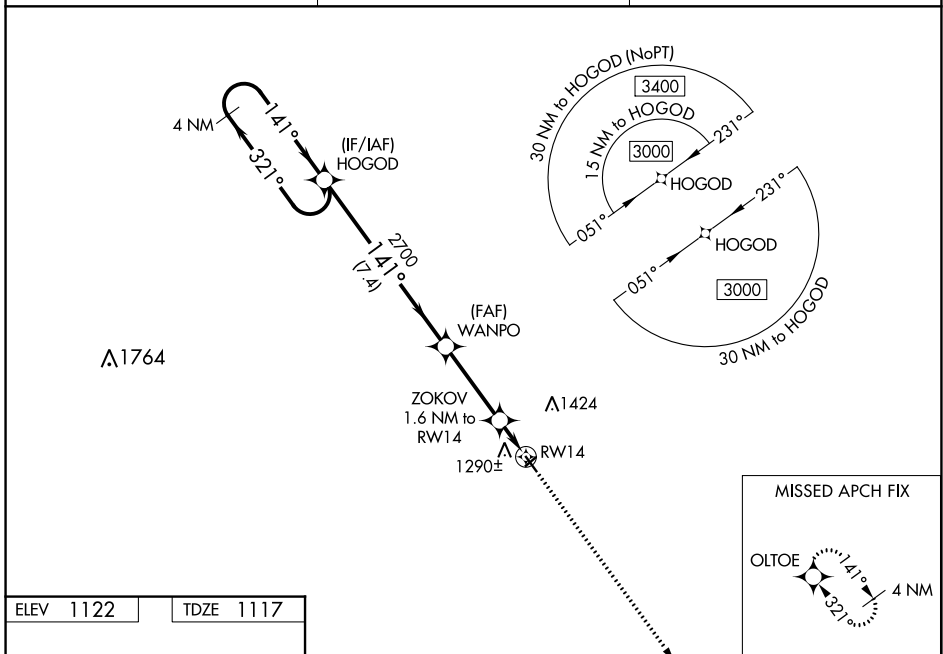
# RNAV (GPS) RWY 14

WEBSTER CITY MUNI (EBS)

**⚠** Baro-VNAV NA when using Clarion altimeter setting. For uncompensated Baro-VNAV systems, LNAV/VNAV NA below -17°C (2°F) or above 54°C (130°F). DME/DME RNP-0.3 NA. When local altimeter setting not received, use Clarion altimeter setting and increase all DAs 49 feet, and all MDA 60 feet; increase LNAV/VNAV all Cats visibility 1/8 mile. Helicopter visibility reduction below 3/4 SM NA.

MISSED APPROACH: Climb to 3000 direct OLTOE and hold.

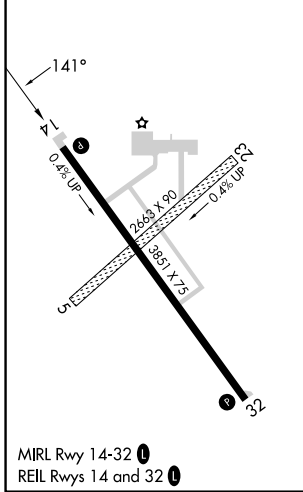
AWOS-3 <b>127.825</b>	MINNEAPOLIS CENTER <b>134.0 288.3</b>	UNICOM <b>122.8 (CTAF) 0</b>
--------------------------	--	---------------------------------



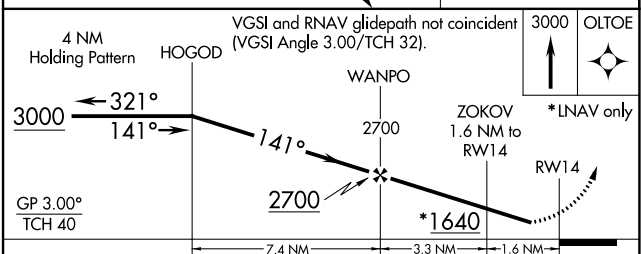
NC-3, 26 DEC 2024 to 23 JAN 2025

NC-3, 26 DEC 2024 to 23 JAN 2025

ELEV <b>1122</b>	TDZE <b>1117</b>
------------------	------------------



MIRL Rwy 14-32 **0**  
REL Rwy 14 and 32 **0**



CATEGORY	A	B	C	D
LPV DA	1367-1	250 (300-1)		NA
LNAV/VNAV DA	1463-1 1/4	346 (400-1 1/4)		NA
LNAV MDA	1540-1	423 (500-1)		NA
<b>C</b> CIRCLING	1600-1	478 (500-1)		NA