

WAAS CH 61126 W22A	APP CRS 224°	Rwy Idg TDZE Apt Elev	5000 1662 1664
--	------------------------	-----------------------------	---

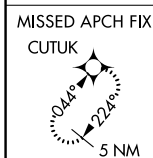
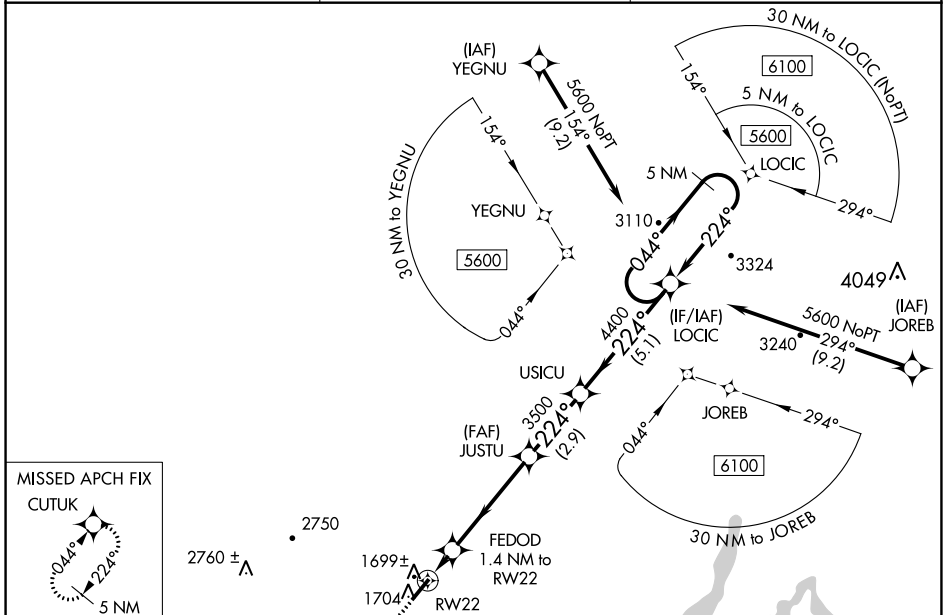
RNAV (GPS) RWY 22

ROCKWOOD MUNI (RKW)

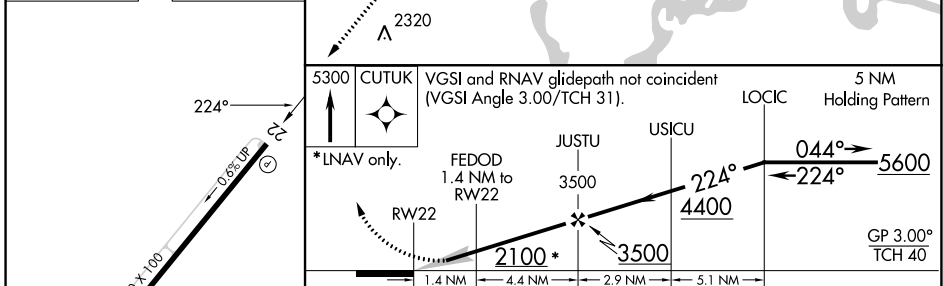
NA For uncompensated Baro-VNAV systems, LNAV/VNAV NA below -18°C (0°F) or above 33°C (91°F). DME/DME RNP-0.3 NA. When local altimeter setting not received, use Crossville altimeter setting; increase LPV DA to 1987 feet and visibility all Cats ¼ SM; increase LNAV/VNAV DA to 2011 feet and visibility all Cats ¼ SM; increase all MDA 80 feet and increase LNAV Cat C and D visibility ¼ SM and Circling Cat C visibility ½ SM. Baro-VNAV NA when using Crossville altimeter setting.

MISSED APPROACH: Climb to 5300 direct CUTUK and hold, continue climb-in-hold to 5300.

AWOS-3 118.775	ATLANTA CENTER 133.6 254.3	UNICOM 122.8 (CTAF)
--------------------------	--------------------------------------	-------------------------------



ELEV 1664	TDZE 1662
-----------	-----------



5300 CUTUK	VGSi and RNAV glidepath not coincident (VGSi Angle 3.00/TCH 31).		5 NM Holding Pattern
*LNAV only.	FEDOD 1.4 NM to RW22	JUSTU 3500	USICU 4400
	2100*	3500	5600
	1.4 NM	4.4 NM	2.9 NM 5.1 NM
			GP 3.00° TCH 40

CATEGORY	A	B	C	D
LPV DA		1912-7/8	250 (300-7/8)	
LNAV/ VNAV DA		1936-7/8	274 (300-7/8)	
LNAV MDA		1980-1	318 (400-1)	
CIRCLING	2100-1 436 (500-1)	2200-1 536 (600-1)	2260-1½ 596 (600-1½)	2780-3 1116 (1200-3)

SE-1, 26 DEC 2024 to 23 JAN 2025

SE-1, 26 DEC 2024 to 23 JAN 2025