

APP CRS	Rwy Idg	3199
276°	TDZE	719
	Apt Elev	724

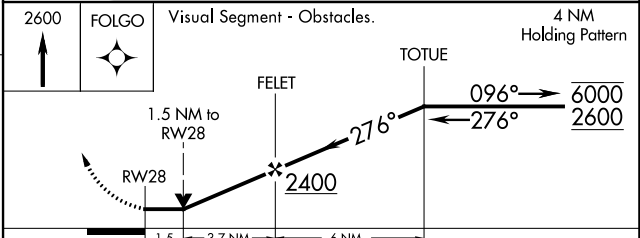
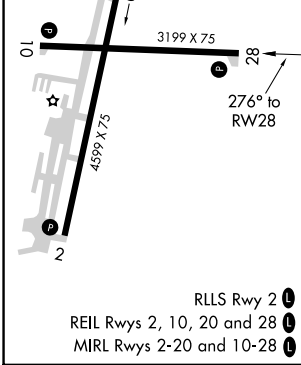
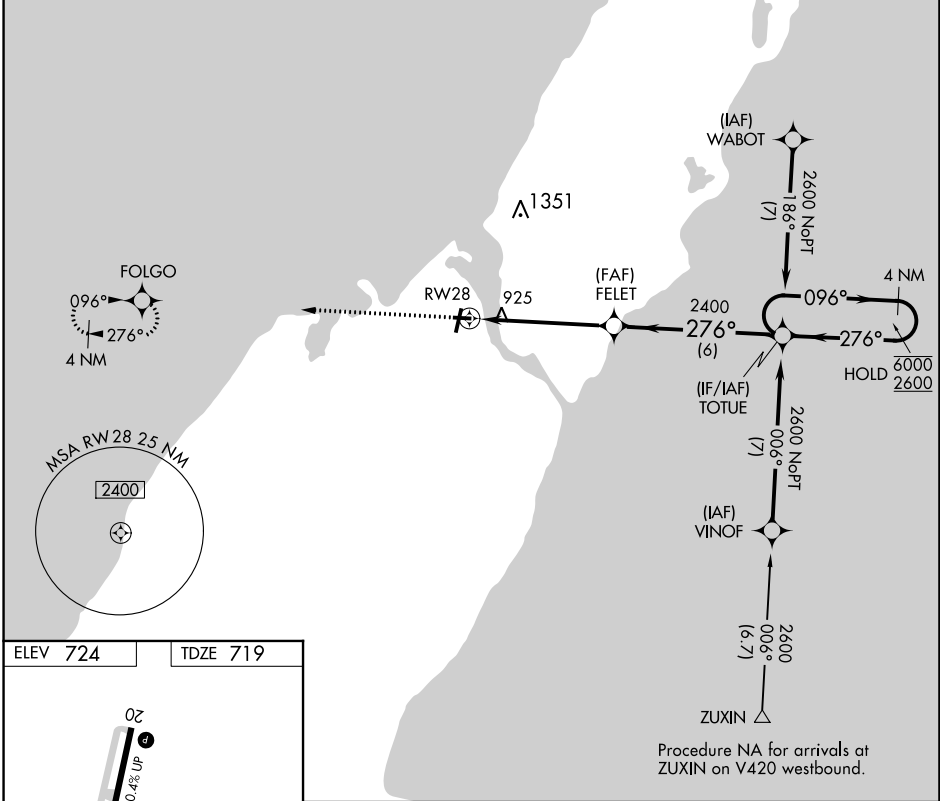
RNAV (GPS) RWY 28

DOOR COUNTY CHERRYLAND (SUE)

RNP APCH - GPS.
 Rwy 28 helicopter visibility reduction below 3/4 SM NA.

MISSED APPROACH: Climb to 2600 direct FOLGO and hold.

AWOS-3PT 128.325	GREEN BAY APP CON ★ 119.25 338.2	UNICOM 122.7 (CTAF)
----------------------------	--	-------------------------------



CATEGORY	A	B	C	D
LNNAV MDA	1240-1	521 (600-1)	1240-1½ 521 (600-1½)	NA
C CIRCLING	1280-1	556 (600-1)	1280-1½ 556 (600-1½)	NA

EC-3, 26 DEC 2024 to 23 JAN 2025

EC-3, 26 DEC 2024 to 23 JAN 2025