

(RICHY7.SWR) 23334

# RICHY SEVEN DEPARTURE

AL-5416 (FAA)

LAKE TAHOE (TVL)  
SOUTH LAKE TAHOE, CALIFORNIA

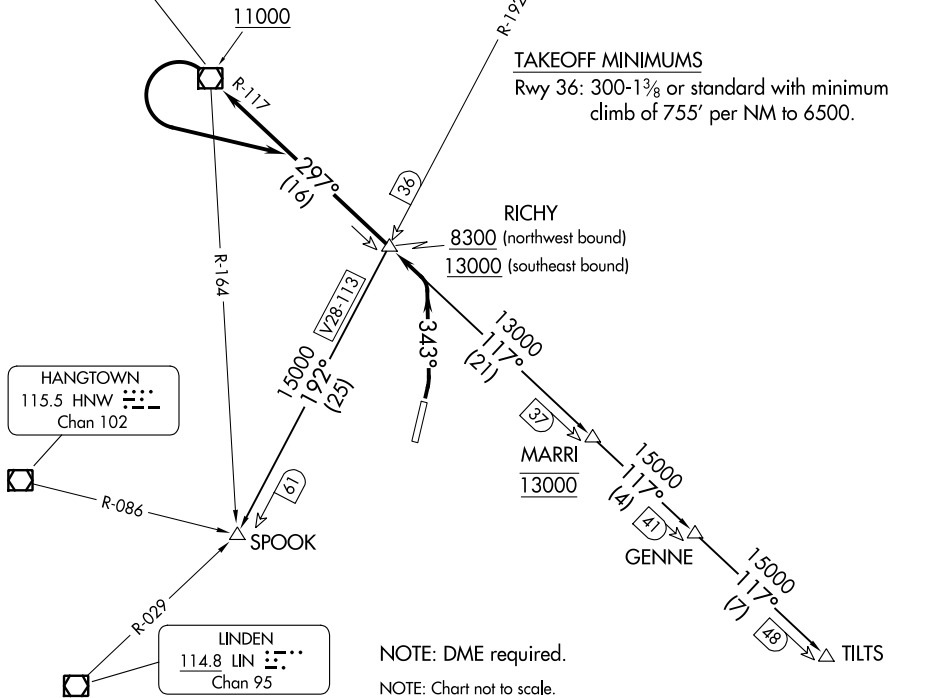
**TOP ALTITUDE:  
ASSIGNED BY ATC**

CLNC DEL 134.3  
OAKLAND CENTER 127.95 316.1  
CTAF 122.85

MUSTANG  
117.9 FMG  
Chan 126

PALISADES  
113.2 SWR  
Chan 79

**TAKEOFF MINIMUMS**  
Rwy 36: 300-1 $\frac{3}{8}$  or standard with minimum climb of 755' per NM to 6500.



NOTE: DME required.  
NOTE: Chart not to scale.

## DEPARTURE ROUTE DESCRIPTION

- TAKEOFF RUNWAY 36:** Climbing left turn on heading 343° to intercept the SWR VOR/DME R-117 northwest bound. Cross RICHY/SWR 16 DME at or above 8300, cross SWR at or above 11000. Thence. . . .  
 . . . on assigned route (Aircraft cleared on a transition turn left to intercept the SWR R-117 southeast bound to cross RICHY at or above 13000). Maintain ATC assigned altitude.
- GENNE TRANSITION (RICHY7.GENNE):** From over RICHY INT on SWR R-117 to GENNE.
- MARRI TRANSITION (RICHY7.MARRI):** From over RICHY INT on SWR R-117 to MARRI.
- SPOOK TRANSITION (RICHY7.SPOOK):** From over RICHY INT on FMG R-192 to SPOOK INT.
- TILTS TRANSITION (RICHY7.TILTS):** From over RICHY INT on SWR R-117 to TILTS.

SW-2, 26 DEC 2024 to 23 JAN 2025

SW-2, 26 DEC 2024 to 23 JAN 2025

# RICHY SEVEN DEPARTURE

(RICHY7.SWR) 25FEB21

SOUTH LAKE TAHOE, CALIFORNIA  
LAKE TAHOE (TVL)