

(IYK2.LHS) 23334

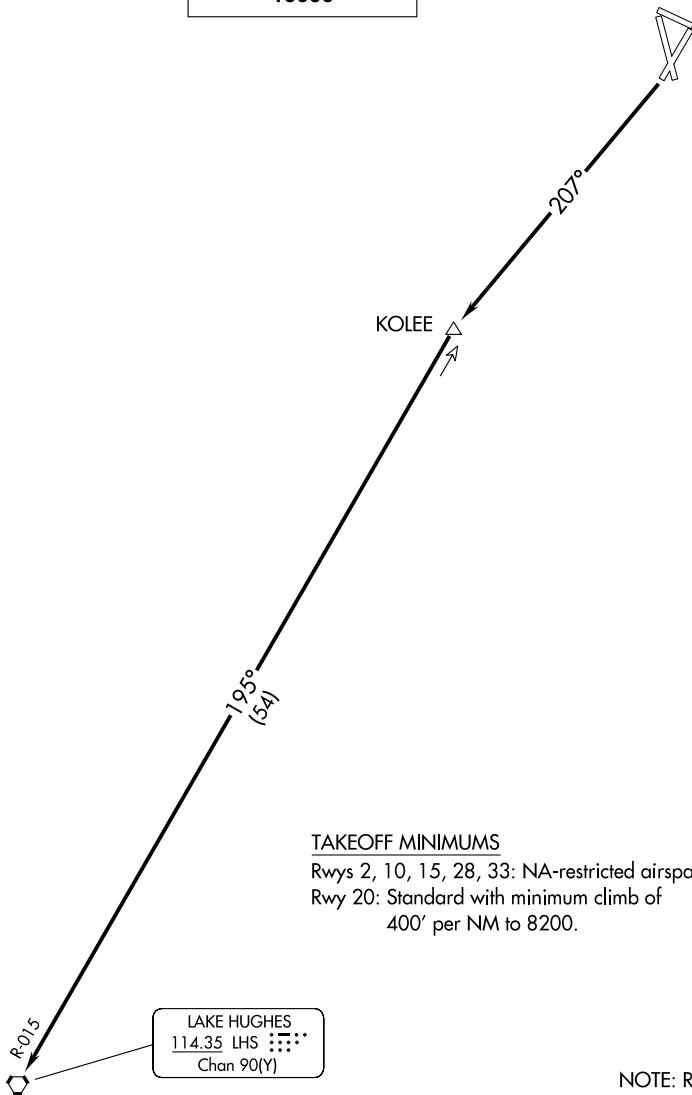
AL-5417 (FAA)

INYOKERN (IYK)  
INYOKERN, CALIFORNIA

# INYOKERN TWO DEPARTURE

JOSHUA DEP CON  
133.65 348.7

**TOP ALTITUDE:**  
**10000**



### TAKEOFF MINIMUMS

Rwys 2, 10, 15, 28, 33: NA-restricted airspace/terrain.

Rwy 20: Standard with minimum climb of  
400' per NM to 8200.

NOTE: RADAR required.

NOTE: Chart not to scale.



### DEPARTURE ROUTE DESCRIPTION

TAKEOFF RWY 20: Climb to 10000 on heading 207° and LHS VORTAC R-015 to LHS VORTAC, then proceed on course.

# INYOKERN TWO DEPARTURE

(IYK2.LHS) 15SEP16

INYOKERN, CALIFORNIA  
INYOKERN (IYK)

SW-3, 26 DEC 2024 to 23 JAN 2025

SW-3, 26 DEC 2024 to 23 JAN 2025