

WAAS CH 53641 W23A	APP CRS 228°	Rwy Idg TDZE Apt Elev	5500 927 927
--	------------------------	-----------------------------	---

RNAV (GPS) RWY 23

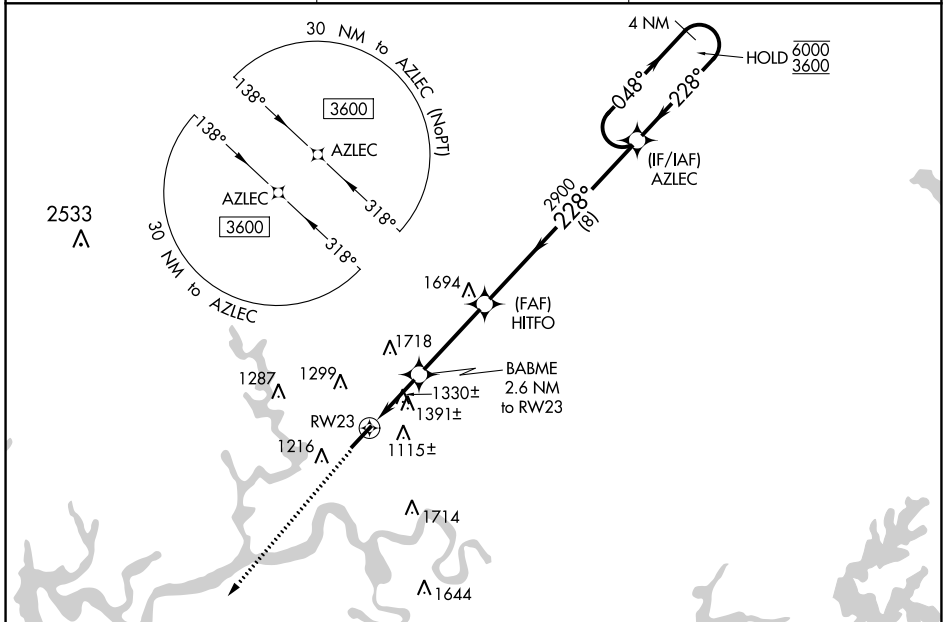
LAKE CUMBERLAND RGNL (SME)

RNP APCH - GPS.

⚠ Rwy 23 helicopter visibility reduction below 3/4 SM NA. When local altimeter setting not received, use Monticello altimeter setting and increase all MDAs 60 feet and LNAV visibility Cat B/C/D 1/2 SM, and LP visibility Cat C/D 1/8 SM, and Circling visibility Cat B 1/4 SM. VDP NA when using Monticello altimeter setting.

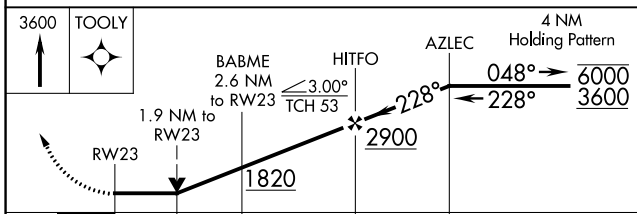
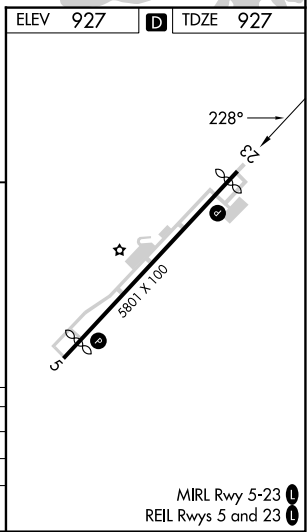
MISSED APPROACH:
Climb to 3600 direct
TOOLY and hold.

AWOS-3 120.05	INDIANAPOLIS CENTER 124.625 371.925	UNICOM 122.8 (CTAF) 📻
-------------------------	---	--



SE-1, 26 DEC 2024 to 23 JAN 2025

SE-1, 26 DEC 2024 to 23 JAN 2025



CATEGORY	A	B	C	D
LP MDA	1580-1	653 (700-1)	1580-1 7/8	653 (700-1 7/8)
LNAV MDA	1660-1	733 (800-1)	1660-2	733 (800-2)
CIRCLING	1660-1 733 (800-1)	1700-1 773 (800-1)	2100-3	1173 (1200-3)