

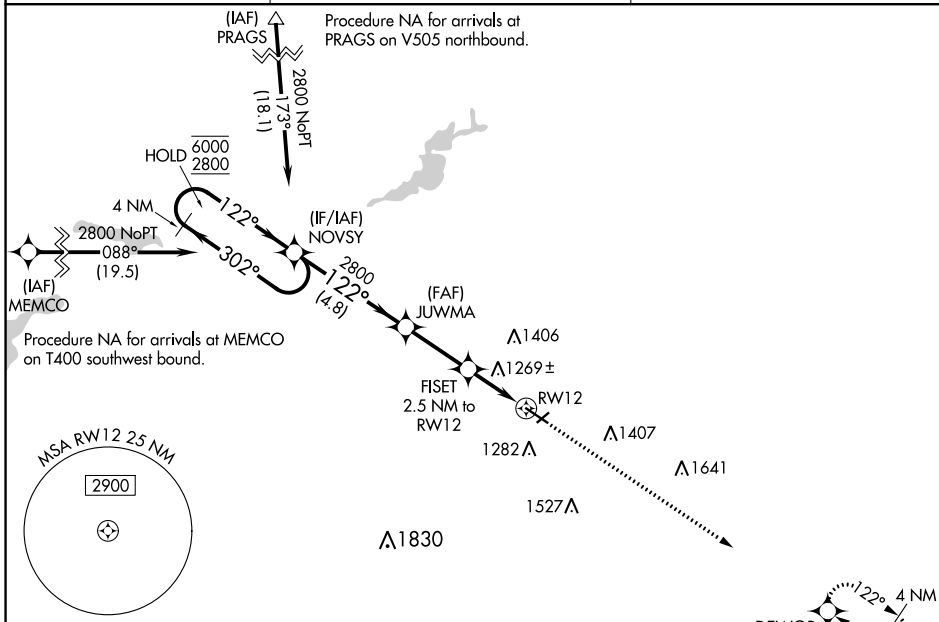
WAAS CH <b>82627</b> <b>W12A</b>	APP CRS <b>122°</b>	Rwy Idg TDZE Apt Elev	<b>5500</b> <b>1127</b> <b>1145</b>
--	------------------------	-----------------------------	---

# RNAV (GPS) RWY 12

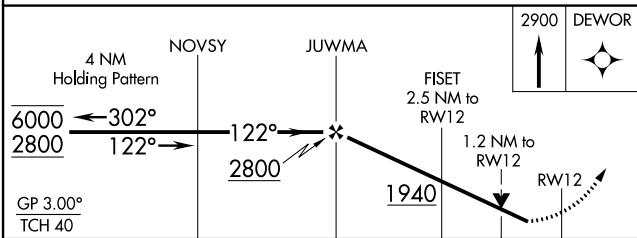
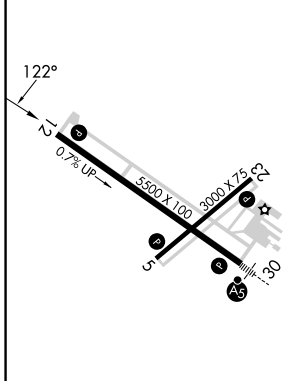
OWATONNA DEGNER RGNL (OWA)

RNP APCH - GPS.	MISSED APPROACH: Climb to 2900 direct DEWOR and hold.
<p><b>▼</b> Rwy 12 helicopter visibility reduction below <math>\frac{3}{4}</math> SM NA. For uncompensated Baro-VNAV systems, LNAV/VNAV NA below -17°C or above 54°C.</p>	

AWOS-3 <b>128.325</b>	ROCHESTER APP CON * <b>119.8 251.125</b>	UNICOM <b>122.7 (CTAF)</b>
--------------------------	---	-------------------------------



ELEV 1145	TDZE 1127
-----------	-----------



CATEGORY	A	B	C	D
LPV DA	1420- $\frac{7}{8}$ 293 (300- $\frac{7}{8}$ )			
LNAV/VNAV DA	1400- $\frac{7}{8}$ 273 (300- $\frac{7}{8}$ )			
LNAV MDA	1520-1	393 (400-1)	1520-1 $\frac{1}{8}$	393 (400-1 $\frac{1}{8}$ )
<b>C</b> CIRCLING	1640-1 495 (500-1)	1700-1 555 (600-1)	1720-1 $\frac{1}{2}$ 575 (600-1 $\frac{1}{2}$ )	1880-2 $\frac{1}{4}$ 735 (800-2 $\frac{3}{4}$ )

MIRL Rwy 5-23 **Ⓛ**  
REIL Rwy 5, 12, and 23 **Ⓛ**  
HIRL Rwy 12-30 **Ⓛ**

NC-1, 26 DEC 2024 to 23 JAN 2025

NC-1, 26 DEC 2024 to 23 JAN 2025