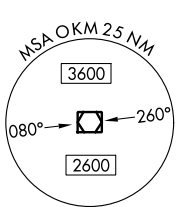
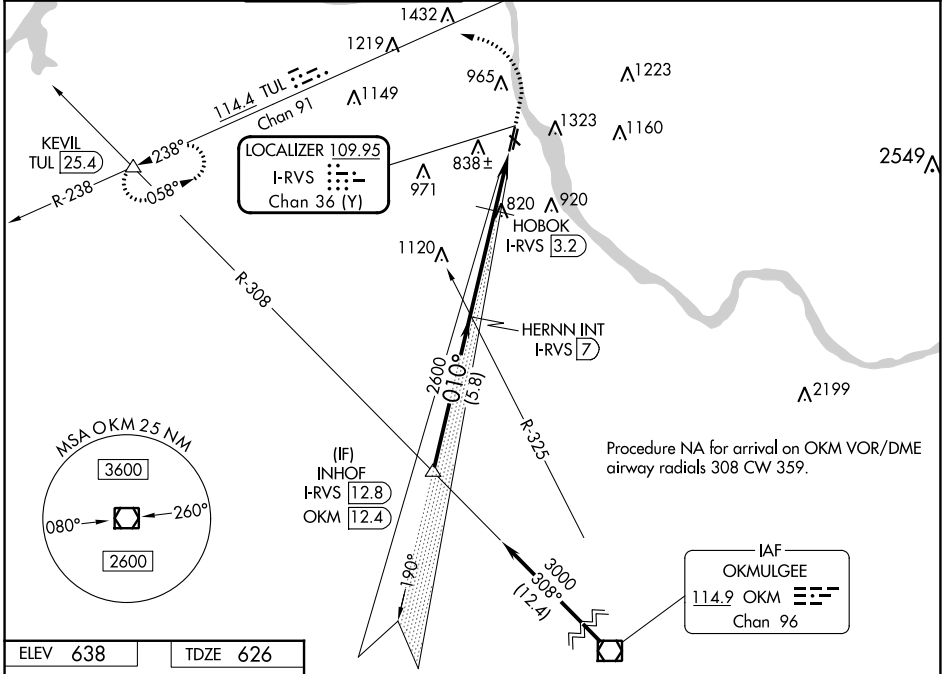


LOC/DME I-RVS 109.95 Chan 36 (Y)	APP CRS 010°	Rwy Idg TDZE Apt Elev 5101 626 638
--	------------------------	--

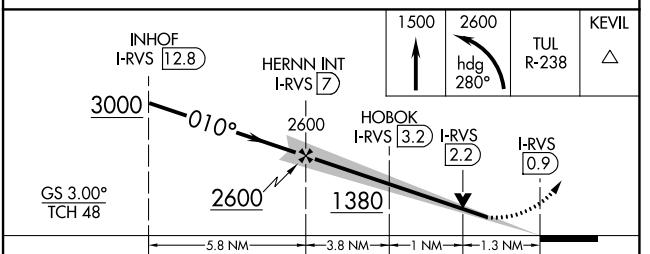
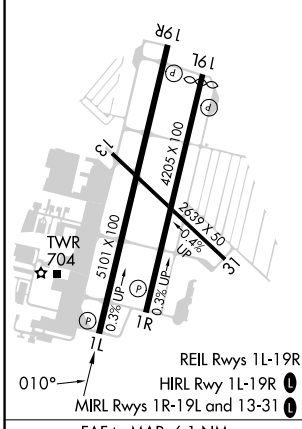
ILS or LOC RWY 1L

TULSA RIVERSIDE (RVS)

<p>Circling NA northeast of Rwys 31 and 19L.</p>		<p>MISSED APPROACH: Climb to 1500 then climbing left turn to 2600 on heading 280° and TUL VORTAC R-238 to KEVIL INT/TUL 25.4 DME and hold.</p>			
ATIS 126.5	TULSA APP CON 134.7	RIVERSIDE TOWER * 120.3 (CTAF) 0	GND CON 121.7	CLNC DEL 124.5	UNICOM 122.95



ELEV 638	TDZE 626
----------	----------



CATEGORY	A	B	C	D
S-ILS 1L	826- ³ / ₄		200 (200- ³ / ₄)	
S-LOC 1L	1380-1 754 (800-1)	1380-1 ¹ / ₄ 754 (800-1 ¹ / ₄)	1380-2	754 (800-2)
CIRCLING	1380-1 742 (800-1)	1380-1 ¹ / ₄ 742 (800-1 ¹ / ₄)	1380-2 ¹ / ₄ 742 (800-2 ¹ / ₄)	1380-2 ¹ / ₂ 742 (800-2 ¹ / ₂)
HOBOK FIX MINIMUMS				
S-LOC 1L	1080-1	454 (500-1)	1080-1 ³ / ₈	454 (500-1 ³ / ₈)
CIRCLING	1260-1 622 (700-1)	1280-1 642 (700-1)	1280-1 ³ / ₄ 642 (700-1 ³ / ₄)	1380-2 ¹ / ₂ 742 (800-2 ¹ / ₂)

FAF to MAP 6.1 NM					
Knots	60	90	120	150	180
Min:Sec	6:06	4:04	3:03	2:26	2:02

SC-1, 26 DEC 2024 to 23 JAN 2025

SC-1, 26 DEC 2024 to 23 JAN 2025