

TULSA, OKLAHOMA

AL-5427 (FAA)

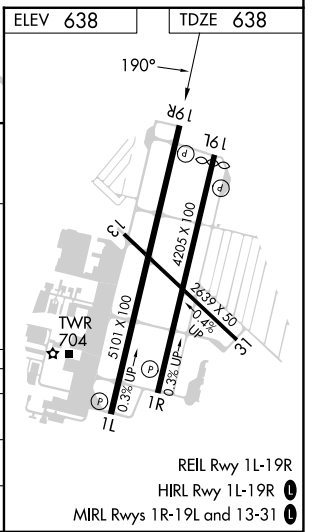
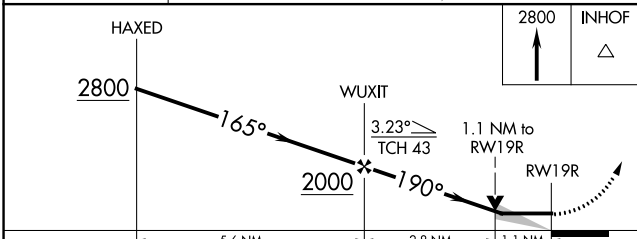
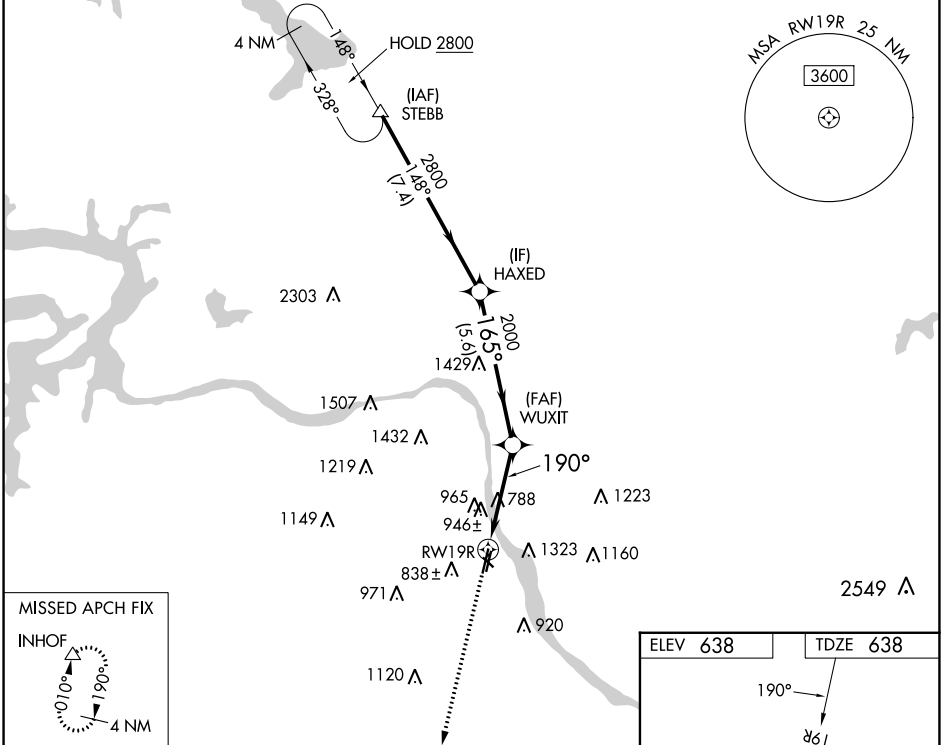
24305

WAAS CH <b>81939</b> <b>W19A</b>	APP CRS <b>190°</b>	Rwy Idg TDZE Apt Elev	<b>5101</b> <b>638</b> <b>638</b>
----------------------------------------	------------------------	-----------------------------	-----------------------------------------

# RNAV (GPS) RWY 19R

TULSA RIVERSIDE (RVS)

<p><b>▽</b> <b>▲</b> Circling NA northeast of Rwsys 31 and 19L. DME/DME RNP-0.3 NA.</p>		<p>MISSED APPROACH: Climb to 2800 direct INHOF and hold.</p>			
ATIS <b>126.5</b>	TULSA APP CON <b>134.7</b>	RIVERSIDE TOWER ★ <b>120.3</b> (CTAF) <b>0</b>	GND CON <b>121.7</b>	CLNC DEL <b>124.5</b>	UNICOM <b>122.95</b>



CATEGORY	A	B	C	D
LP MDA	1040-1	402 (500-1)	1040-1½	402 (500-1½)
LNVA MDA	1200-1	562 (600-1)	1200-1½	562 (600-1½)
<b>C</b> CIRCLING	1260-1 622 (700-1)	1280-1 642 (700-1)	1280-1¾ 642 (700-1¾)	1380-2½ 742 (800-2½)

TULSA, OKLAHOMA  
Amdt 1 02MAR17

36°02'N-95°59'W

# RNAV (GPS) RWY 19R

REIL Rwy 1L-19R  
HIRL Rwy 1L-19R **0**  
MIRL Rwsys 1R-19L and 13-31 **0**

SC-1, 26 DEC 2024 to 23 JAN 2025

SC-1, 26 DEC 2024 to 23 JAN 2025