

WAAS CH <b>77731</b> <b>W02A</b>	APP CRS <b>018°</b>	Rwy Idg TDZE Apt Elev	<b>5500</b> <b>1018</b> <b>1021</b>
--	------------------------	-----------------------------	---

# RNAV (GPS) RWY 2

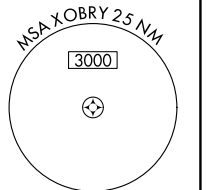
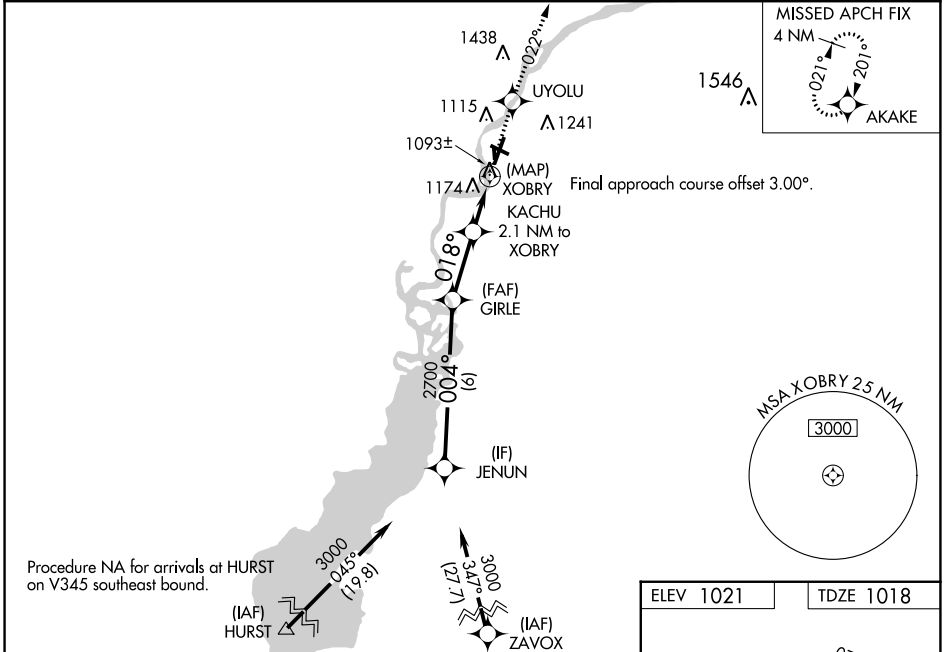
ALEXANDER FLD SOUTH WOOD COUNTY (ISW)

RNP APCH - GPS.

**⚠** Circling NA to Rwys 18 and 36. Circling Rwy 20, 30 NA at night. Baro-VNAV and VDP NA when using Stevens Point altimeter setting. Rwy 2 helicopter visibility reduction below 3/4 SM NA. For uncompensated Baro-VNAV systems, LNAV/VNAV NA below -17°C or above 54°C. When local altimeter setting not received, use Stevens Point altimeter setting; increase LPV DA to 1351 feet; increase LNAV/VNAV DA to 1546 feet and all visibilities 1/2 SM; increase all MDAs 60 feet, LNAV Cat C and D visibilities 1/2 SM and Circling Cat C and D visibilities 1/4 SM.

**⚠** MISSED APPROACH: Climb to 3000 direct UYOLU and on track 022° to AKAKE and hold.

ASOS <b>126.575</b>	MINNEAPOLIS CENTER <b>124.4 317.7</b>	UNICOM <b>122.8 (CTAF) 0</b>
------------------------	--	---------------------------------

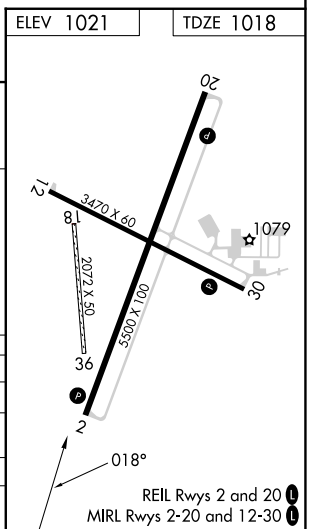


Procedure NA for arrivals at HURST on V345 southeast bound.

Procedure NA for arrivals at HURST on V345 southeast bound.

GP 3.00° TCH 50

VGS1 and RNAV glidepath not coincident (VGS1 Angle 3.00/TCH 35).		3000	UYOLU	tr 022°	AKAKE
JENUN		GIRLE	KACHU	XOBRY	AKAKE
3000		2700	1880		
004°		018°	022°		
6 NM		2.6 NM	1.4 NM	0.7 NM	0.5 NM
CATEGORY	A	B	C	D	
LPV DA	1298-1		280 (300-1)		
LNAV/VNAV DA	1493-1 3/8		475 (500-1 3/8)		
LNAV MDA	1440-1	422 (500-1)	1440-1 1/4	422 (500-1 1/4)	
<b>C</b> CIRCLING	1480-1 459 (500-1)	1560-1 539 (600-1)	1620-1 1/2 599 (600-1 1/2)	1800-2 1/2 779 (800-2 1/2)	



EC-3, 26 DEC 2024 to 23 JAN 2025

EC-3, 26 DEC 2024 to 23 JAN 2025