

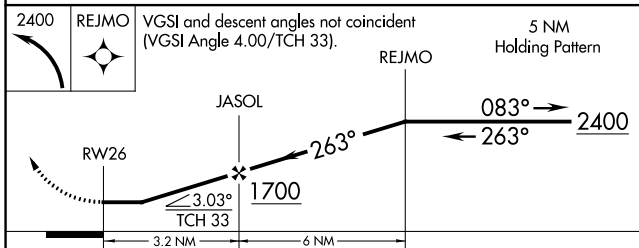
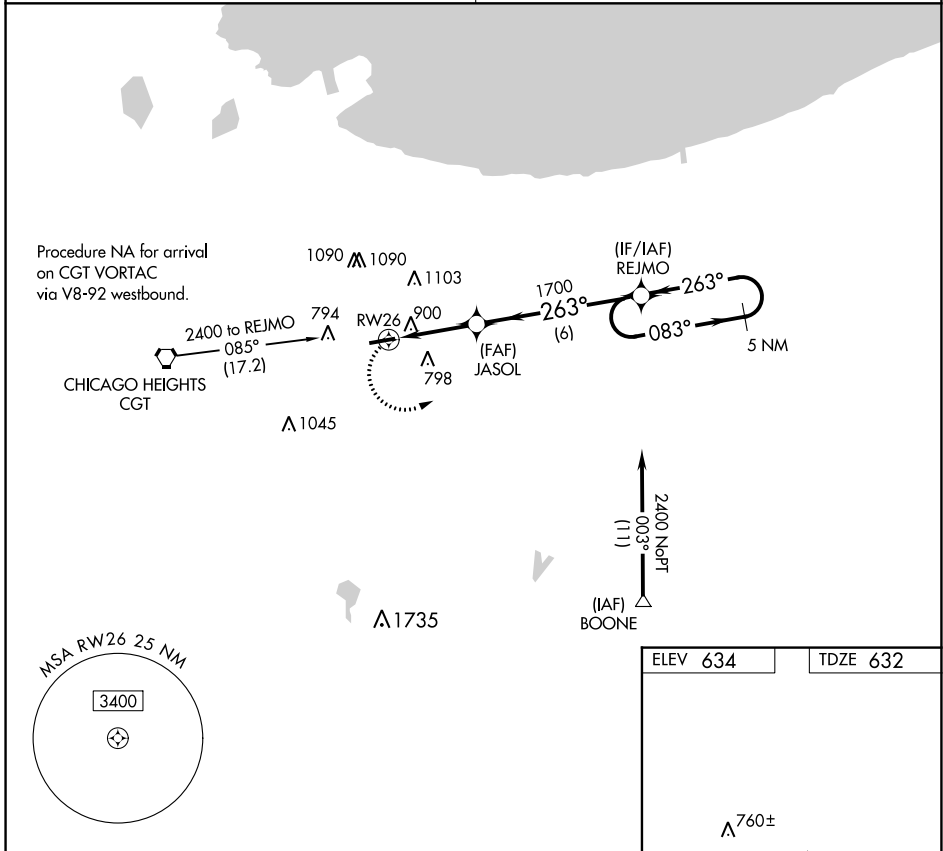
APP CRS 263°	Rwy Idg 3779
	TDZE 632
	Apt Elev 634

RNAV (GPS) RWY 26

GRIFFITH-MERRILLVILLE (Ø5C)

RNP APCH	Obtain local altimeter setting on CTAF; when not received use Chicago Midway Intl altimeter setting and increase all MDAs 60 feet. Visibility reduction by helicopters NA. Procedure NA at night.	MISSED APPROACH: Climbing left turn to 2400 direct REJMO and hold.
----------	---	--

CHICAGO APP CON 133.1 285.6	UNICOM 123.0 (CTAF)
---------------------------------------	-------------------------------



ELEV 634	TDZE 632
----------	----------

△ 760±

4899 X 75

26°

263°

CATEGORY	A	B	C	D
LNAV MDA	1160-1	528 (600-1)		NA
CIRCLING	1200-1	566 (600-1)		NA

REIL Rwy 8 and 26

MIRL Rwy 8-26

EC-2, 26 DEC 2024 to 23 JAN 2025

EC-2, 26 DEC 2024 to 23 JAN 2025