

GRIFFITH, INDIANA

AL-5431 (FAA)

24137

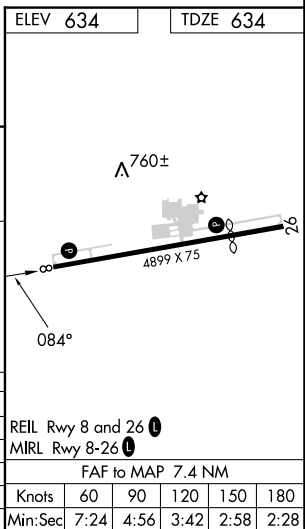
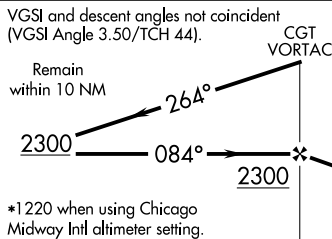
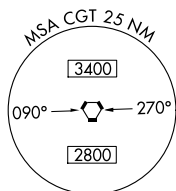
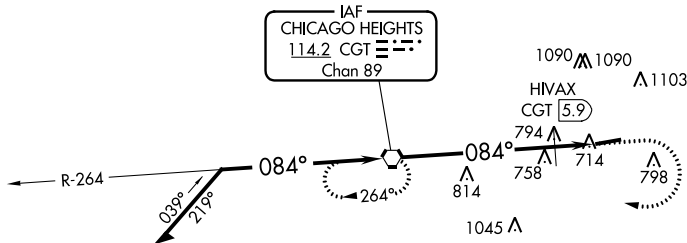
VORTAC CGT 114.2 Chan 89	APP CRS 084°	Rwy Idg TDZE 634 Apt Elev 634	4899
--	------------------------	---	-------------

VOR RWY 8
GRIFFITH-MERRILLVILLE (05C)

<p>NA Obtain local altimeter setting on CTAF; when not received, use Chicago Midway Intl altimeter setting and increase all MDAs 60 feet. Visibility reduction by helicopters NA. Procedure NA at night.</p>	<p>MISSED APPROACH: Climb to 1100 then climbing right turn to 2300 direct CGT VORTAC and hold.</p>
---	---

CHICAGO APP CON
133.1 285.6

UNICOM
123.0 (CTAF) 0



CATEGORY	A	B	C	D
S-8	1160-1	526 (600-1)		NA
CIRCLING	1200-1	566 (600-1)		NA
HIVAX FIX MINIMUMS				
S-8	1060-1	426 (500-1)		NA
CIRCLING	1200-1	566 (600-1)		NA

GRIFFITH, INDIANA
Amdt 8B 24MAY18

41°31'N-87°24'W

GRIFFITH-MERRILLVILLE (05C)
VOR RWY 8

EC-2, 26 DEC 2024 to 23 JAN 2025

EC-2, 26 DEC 2024 to 23 JAN 2025