

WAAS CH <b>93928</b> <b>W30A</b>	APP CRS <b>301°</b>	Rwy Idg TDZE Apt Elev	<b>3760</b> <b>25</b> <b>25</b>
--	------------------------	-----------------------------	---------------------------------------

# RNAV (GPS) RWY 30

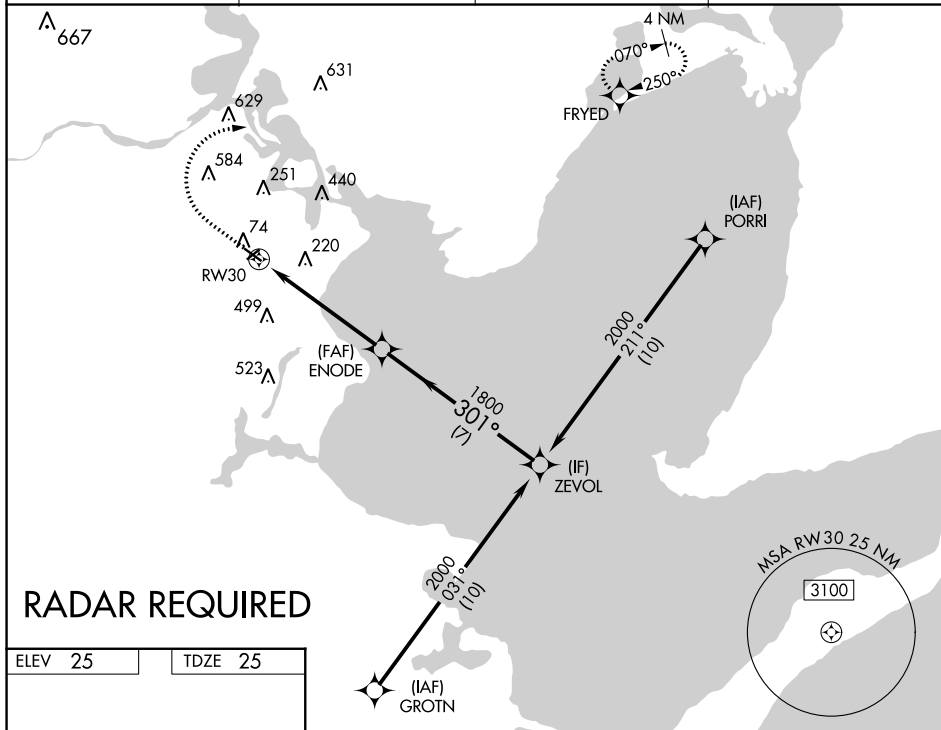
LA PORTE MUNI (T41)

RNP APCH.

Baro-VNAV NA. Use Ellington altimeter setting. Rwy 30 helicopter visibility reduction below  $\frac{3}{4}$  SM NA. Circling Rwy 5, 23 NA at night.

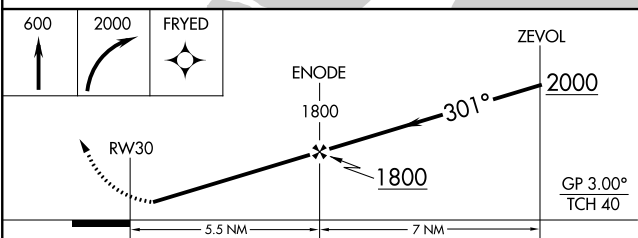
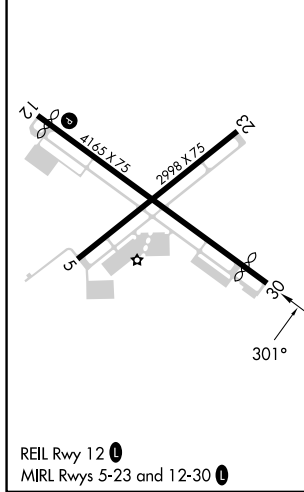
MISSED APPROACH: Climb to 600 then climbing right turn to 2000 direct FRYED and hold.

AWOS-3PT <b>120.275</b>	HOUSTON APP CON <b>134.45 284.0</b>	CLNC DEL <b>125.6</b>	UNICOM <b>122.7 (CTAF)</b>
----------------------------	--	--------------------------	-------------------------------



## RADAR REQUIRED

ELEV 25	TDZE 25
---------	---------



	A	B	C	D
LPV DA	291-1 266 (300-1)			NA
LNAV/VNAV DA	454-1 $\frac{1}{4}$ 429 (500-1 $\frac{1}{4}$ )			NA
LNAV MDA	520-1	495 (500-1)	520-1 $\frac{3}{8}$ 495 (500-1 $\frac{3}{8}$ )	NA
CIRCLING	600-1 575 (600-1)	620-1 595 (600-1)	880-2 $\frac{1}{2}$ 855 (900-2 $\frac{1}{2}$ )	NA