

APP CRS	Rwy Idg	3798
183°	TDZE	585
	Apt Elev	585

RNAV (GPS) RWY 18

JAMES CLEMENTS MUNI (3CM)

RNP APCH - GPS.

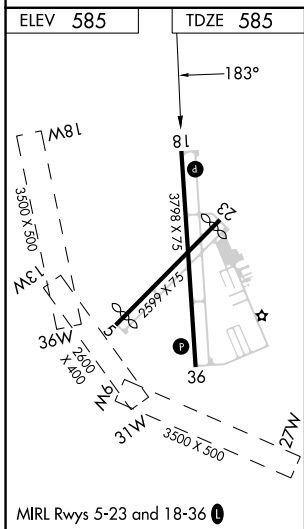
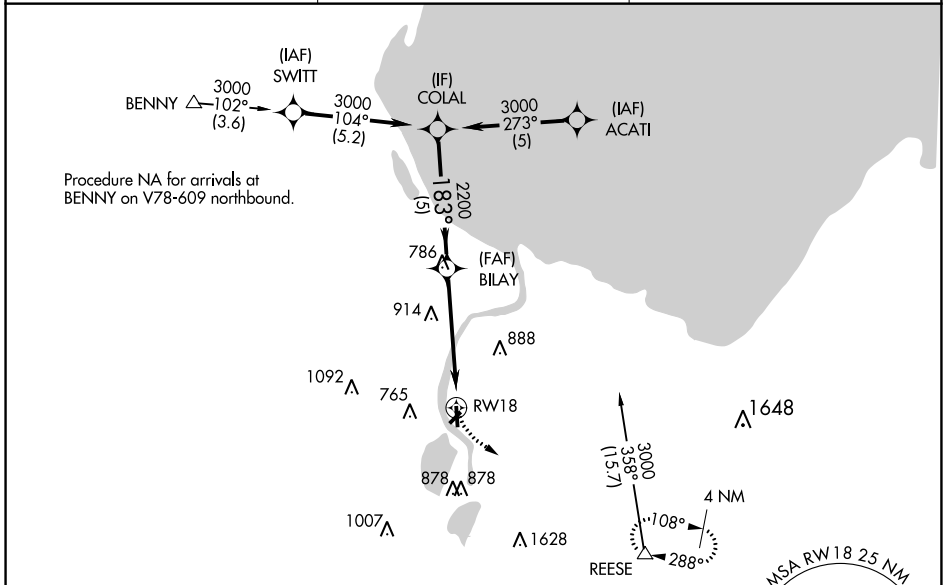
▼ Circling NA to Rwys 18W, 36W, 13W, 31W, 9W and 27W.
▲ Circling NA southeast of Rwys 23 and 36. Rwy 18 helicopter visibility reduction below 1 SM NA. Use Saginaw County H W Browne altimeter setting. Procedure NA at night.

MISSED APPROACH: Climbing left turn to 3000 direct REESE and hold.

HYX AWOS-3PT
118.325

GREAT LAKES APP CON ★
120.95 235.625

UNICOM
122.725 (CTAF) ①



ELEV 585	TDZE 585	COLAL		VGSI and descent angles not coincident (VGSI Angle 4.00/TCH 27).	3000	REESE
		3000	BILAY	183°	2200	△
				2.96° TCH 45		
		5 NM		5 NM		
CATEGORY	A	B	C	D		
LNAV MDA	1260-1	675 (700-1)	1260-2 675 (700-2)	NA		
CIRCLING	1260-1	675 (700-1)	1260-2 675 (700-2)	NA		

EC-1, 26 DEC 2024 to 23 JAN 2025

EC-1, 26 DEC 2024 to 23 JAN 2025