

LOC I-HYS 111.5	APP CRS 339°	Rwy Idg 6501
		TDZE 1994
		Apt Elev 1999

ILS or LOC RWY 34

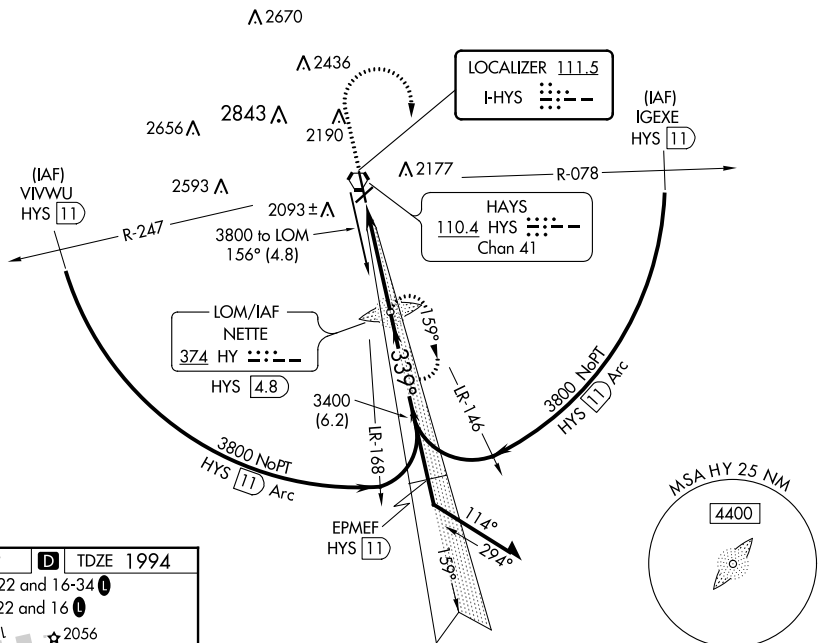
HAYS RGNL (HYS)

NA ADF required. Circling NA for Cat D northwest of Rwy 4 and west of Rwy 16. When local altimeter setting not received, use Russell altimeter setting: increase DA to 2263 feet; increase all MDA 80 feet and visibility S-LOC 34 Cat C and Circling Cat C and D ¼ SM. For inoperative MALSR when using Russell altimeter setting, increase S-ILS all Cats visibility to 1.

MALSR
MISSED APPROACH: Climb to 2600 then climbing right turn to 3800 direct NETTE LOM/HYS 4.8 DME and hold.

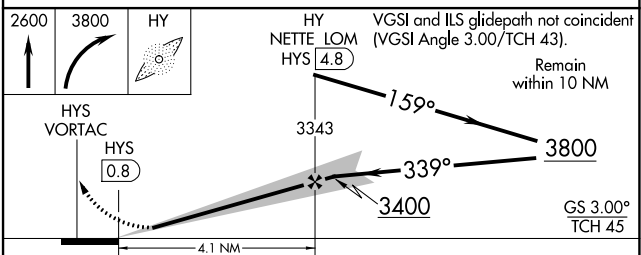
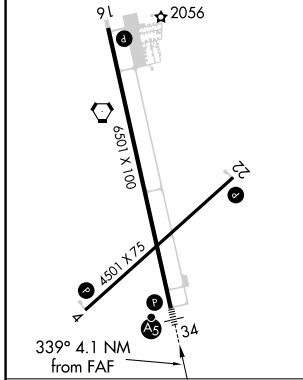
AWOS-3PT 125.525	KANSAS CITY CENTER 124.4 322.4	UNICOM 122.8 (CTAF)
----------------------------	--	-------------------------------

ADF or DME REQUIRED



ELEV 1999 **D** TDZE 1994

MIRL Rwy 4-22 and 16-34
 REIL Rwy 4, 22 and 16



CATEGORY	A	B	C	D
S-ILS 34	2194-½		200 (200-½)	
S-LOC 34	2340-½		346 (400-½)	
CIRCLING	2480-1 481 (500-1)		2560-1½ 561 (600-1½)	
			2340-¾ 346 (400-¾)	
			2680-2¼ 681 (700-2¼)	

HAYS, KANSAS
 Orig-F 27JAN22

38°51'N-99°16'W

ILS or LOC RWY 34

HAYS RGNL (HYS)

NC-2, 26 DEC 2024 to 23 JAN 2025

NC-2, 26 DEC 2024 to 23 JAN 2025