

WAAS CH <b>90519</b> <b>W04A</b>	APP CRS <b>040°</b>	Rwy Idg TDZE <b>1990</b> Apt Elev <b>1999</b>	<b>4500</b>
--	------------------------	---	-------------

# RNAV (GPS) RWY 4

HAYS RGNL (HYS)

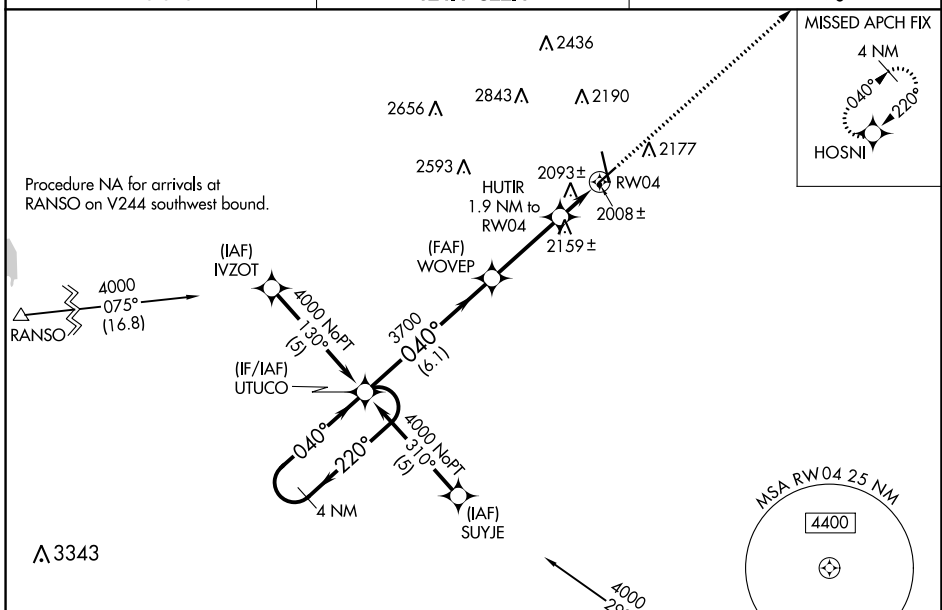
**⚠** For uncompensated Baro-VNAV systems, LNAV/VNAV NA below -18°C (0°F) or above 45°C (113°F).  
DME/DME RNP-0.3 NA. Visibility reduction by helicopters NA. When local altimeter setting not received, use Russell altimeter setting; increase LPV DA to 2309 feet and visibility all Cats ¼ SM; increase LNAV/VNAV DA to 2347 feet and visibility all Cats ¼ SM; increase all MDA 80 feet and visibility LNAV Cat C and Circling Cat C and D ¼ SM. Circling NA for Cat D northwest of Rwy 4 and west of Rwy 16. Baro-VNAV NA when using Russell altimeter setting.

**MISSED APPROACH:**  
Climb to 4000 direct HOSNI and hold.

AWOS-3PT  
**125.525**

KANSAS CITY CENTER  
**124.4 322.4**

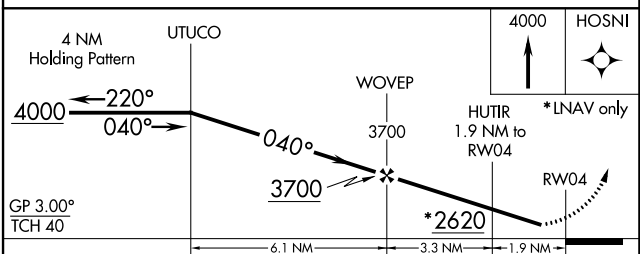
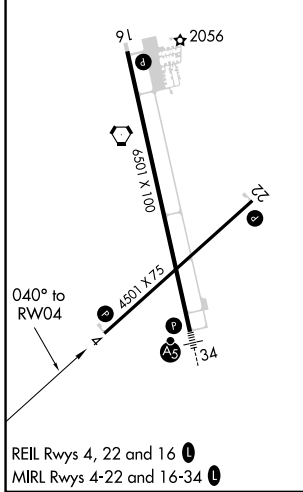
UNICOM  
**122.8 (CTAF) 0**



NC-2, 26 DEC 2024 to 23 JAN 2025

NC-2, 26 DEC 2024 to 23 JAN 2025

ELEV 1999	<b>D</b>	TDZE 1990
-----------	----------	-----------



CATEGORY	A	B	C	D
LPV DA		2240-1	250 (300-1)	
LNAV/VNAV DA		2278-1	288 (300-1)	
LNAV MDA	2420-1	430 (500-1)	2420-1¼ 430 (500-1¼)	2420-1½ 430 (500-1½)
CIRCLING	2480-1	481 (500-1)	2560-1½ 561 (600-1½)	2680-2¼ 681 (700-2¼)

HAYS, KANSAS  
Orig-A 27JAN22

38°51'N-99°16'W

# RNAV (GPS) RWY 4

HAYS RGNL (HYS)