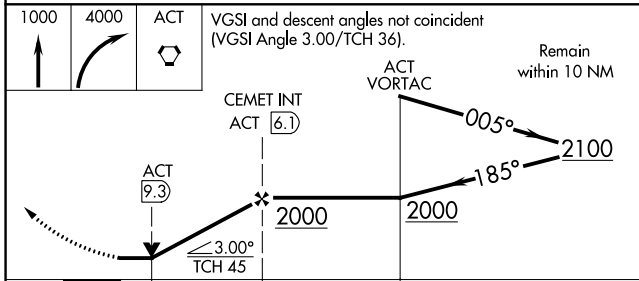
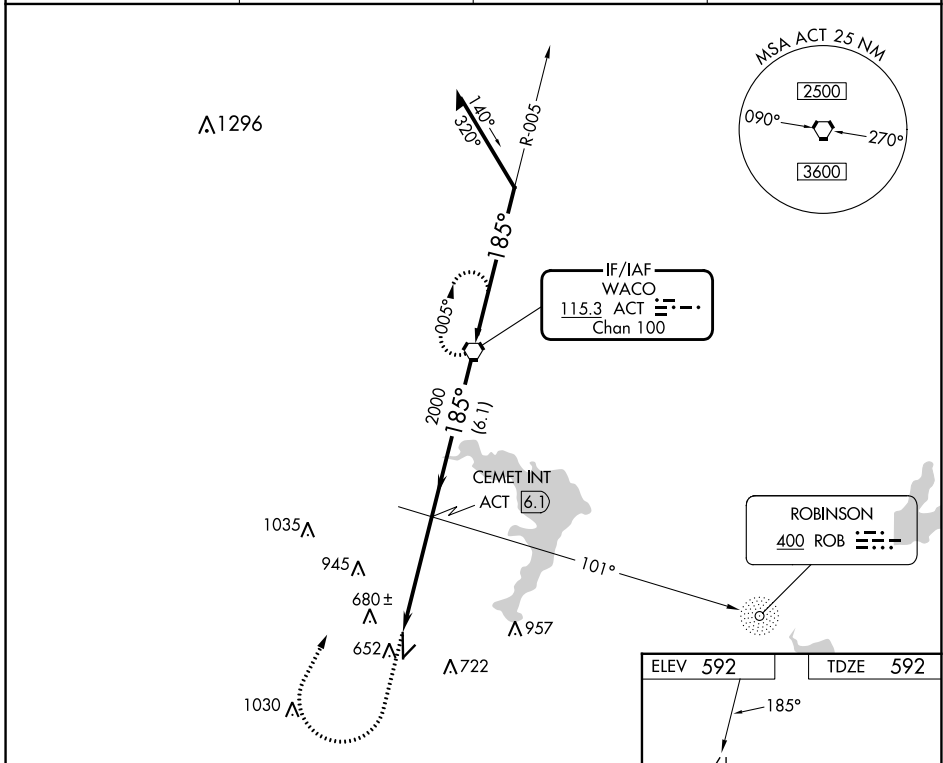


VORTAC ACT 115.3	APP CRS 185°	Rwy Idg TDZE 592	5501
Chan 100		Apt Elev 592	

VOR RWY 17

MC GREGOR EXEC (PWG)

ADF or DME required.		MISSED APPROACH: Climb to 1000 then climbing right turn to 4000 direct ACT VORTAC and hold, continue climb-in-hold to 4000.	
ASR			
AWOS-3PT 135.525	WACO APP CON * 127.65 352.0	GCO 121.725	UNICOM 123.05 (CTAF) 0



ELEV 592	TDZE 592
REIL Rwy 17 0	
MIRL Rwy 17-35 0	
FAF to MAP 4.3 NM	
Knots	60 90 120 150 180
Min:Sec	4:18 2:52 2:09 1:43 1:26

CATEGORY	A	B	C	D
S-17	980-1	388 (400-1)	980-1½ 388 (400-1½)	NA
CIRCLING	980-1 388 (400-1)	1060-1 468 (500-1)	1300-2 708 (800-2)	NA

SC-3, 26 DEC 2024 to 23 JAN 2025

SC-3, 26 DEC 2024 to 23 JAN 2025