

WAAS CH <b>97723</b> <b>W22A</b>	APP CRS <b>223°</b>	Rwy ldg <b>5104</b> TDZE <b>649</b> Apt Elev <b>650</b>
--	------------------------	---

# RNAV (GPS) RWY 22

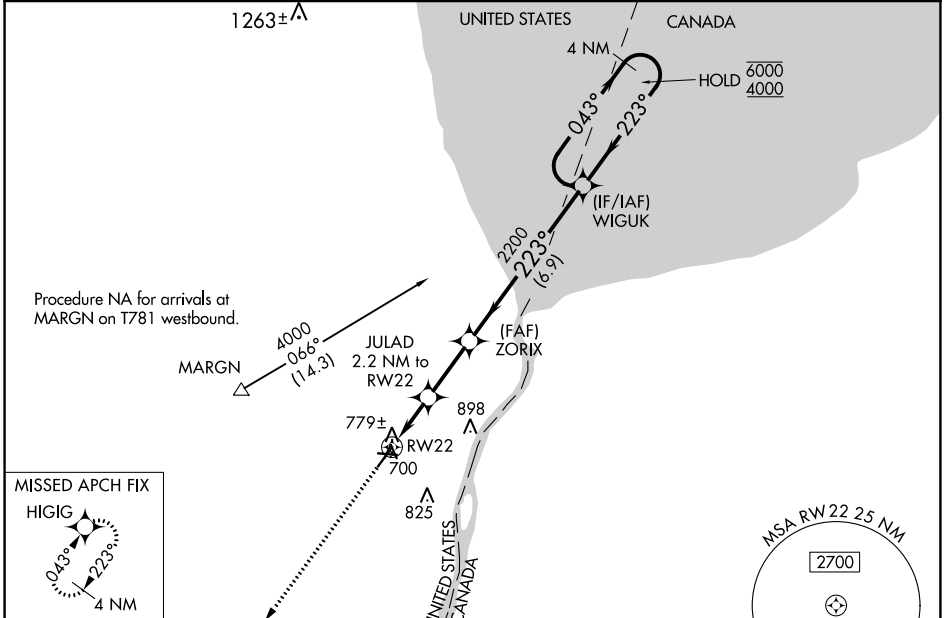
ST CLAIR COUNTY INTL (PHN)

RNP APCH.

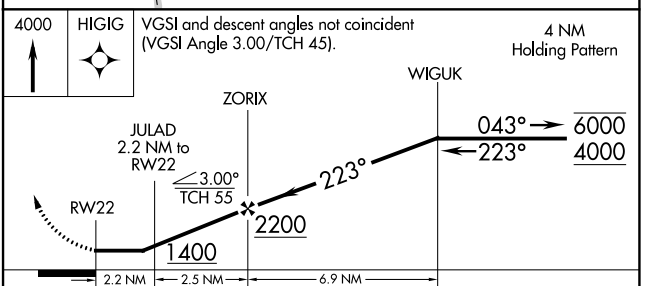
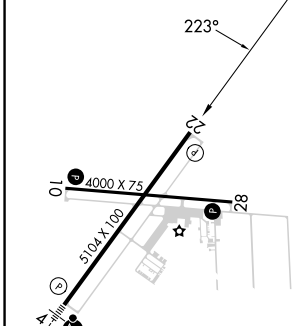
**⚠** Rwy 22 helicopter visibility reduction below 1 SM NA.  
**⚠** Straight-in Rwy 22 NA at night, Circling Rwy 10, 22, 28 NA at night.

MISSED APPROACH: Climb to 4000 direct HIGIG and hold, continue climb-in-hold to 4000.

AWOS-3 <b>118.375</b>	SELFRIDGE APP CON ★ <b>119.6 391.9</b>	UNICOM <b>123.05 (CTAF) 0</b>
--------------------------	---	----------------------------------



ELEV <b>650</b>	TDZE <b>649</b>
-----------------	-----------------



CATEGORY	A	B	C	D
LP MDA	1020-1 371 (400-1)			
LNAV MDA	1040-1 391 (400-1)	1040-1½ 391 (400-1½)		
<b>C</b> CIRCLING	1160-1 510 (600-1)	1260-1¾ 610 (700-1¾)	1260-2 610 (700-2)	

HIRL Rwy 4-22 **0**  
MIRL Rwy 10-28 **0**  
REIL Rws 10, 22, and 28 **0**

EC-1, 26 DEC 2024 to 23 JAN 2025

EC-1, 26 DEC 2024 to 23 JAN 2025