


WAAS CH 53523 W04A	APP CRS 043°	Rwy ldg TDZE 647 Apt Elev 650	5104
--	------------------------	---	-------------

RNAV (GPS) RWY 4


ST CLAIR COUNTY INTL (PHN)

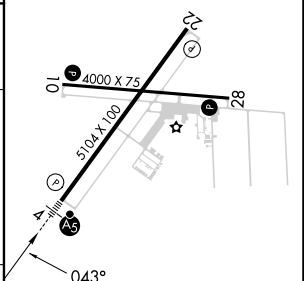
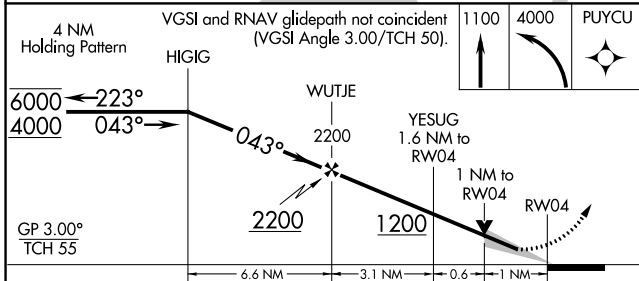
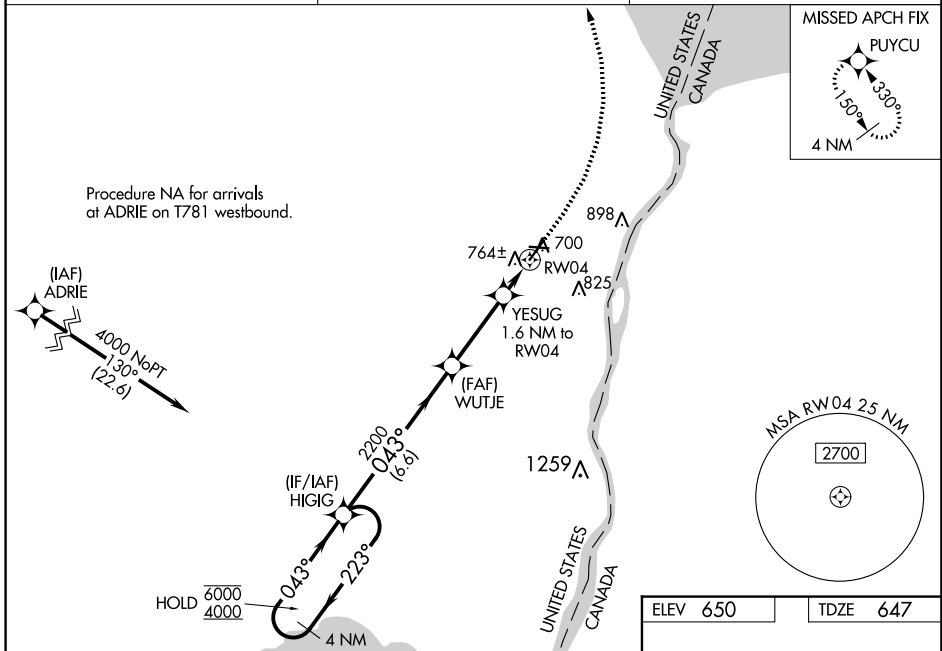
RNP APCH - GPS.

⚠ Circling Rwy 10, 22, 28 NA at night. For uncompensated Baro-VNAV systems, LNAV/VNAV NA below -16°C or above 54°C. For inop ALS, increase LNAV/VNAV all Cats visibility to 7/8 SM and LNAV Cat C/D visibility to 1 SM.


MALS 


MISSED APPROACH: Climb to 1100 then climbing left turn to 4000 direct PUYCU and hold, continue climb-in-hold to 4000.


AWOS-3 118.375	SELFDRGE APP CON * 119.6 391.9	UNICOM 123.05 (CTAF) 
--------------------------	--	--



CATEGORY	A	B	C	D
LPV DA	847-1/2		200 (200-1/2)	
LNAV/VNAV DA	930-1/2		283 (300-1/2)	
LNAV MDA	1020-1/2 373 (400-1/2)		1020-5/8 373 (400-5/8)	
C CIRCLING	1160-1 510 (600-1)		1260-1 3/4 610 (700-1 3/4) 1260-2 610 (700-2)	

HIRL Rwy 4-22 

MIRL Rwy 10-28 

REIL Rws 10, 22, and 28 

EC-1, 26 DEC 2024 to 23 JAN 2025

EC-1, 26 DEC 2024 to 23 JAN 2025