

WAAS CH <b>63123</b> <b>W10A</b>	APP CRS <b>104°</b>	Rwy ldg <b>5504</b> TDZE <b>1191</b> Apt Elev <b>1191</b>
--	------------------------	---

# RNAV (GPS) RWY 10

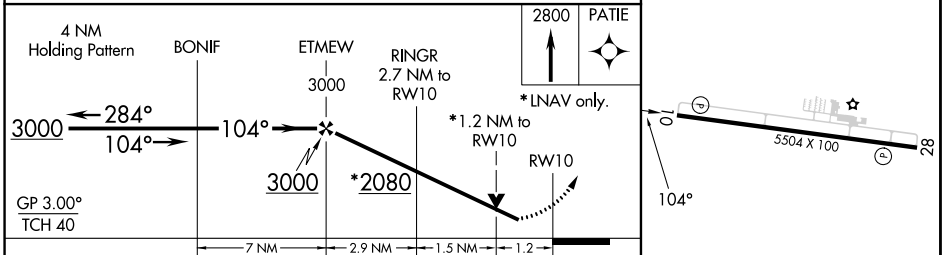
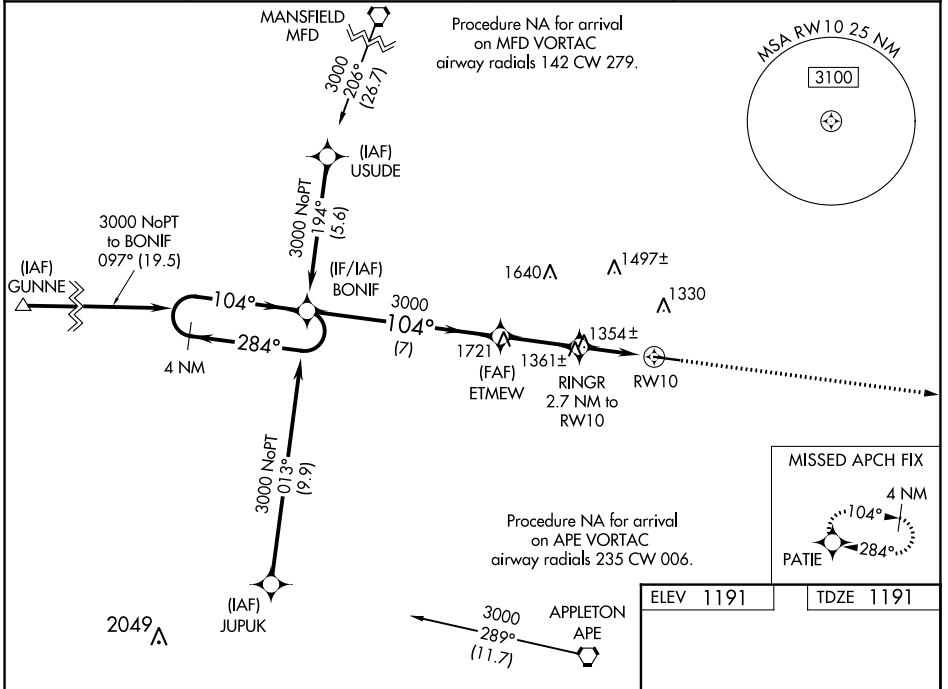
KNOX COUNTY (4I3)

RNP APCH.

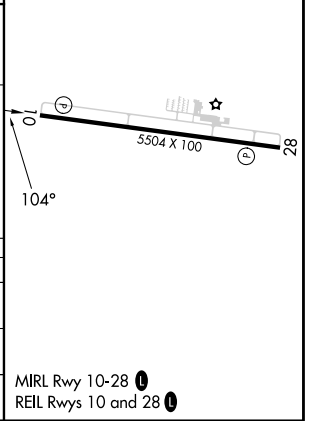
Baro-VNAV and VDP NA when using Newark altimeter setting. For uncompensated Baro-VNAV systems, LNAV/VNAV NA below -17°C (2°F) or above 36°C (96°F). When local altimeter setting not received, use Newark altimeter setting and increase all DA 86 feet and all MDA 100 feet and increase LPV all Cats, LNAV/VNAV all Cats, LNAV Cat C and D visibility ¼ mile. Rwy 10 helicopter visibility reduction below ¾ SM NA.

MISSED APPROACH: Climb to 2800 direct PATIE and hold.

AWOS-3 <b>126.05</b>	COLUMBUS APP CON <b>125.95 317.775</b>	CLNC DEL <b>119.45</b>	UNICOM <b>123.05 (CTAF)</b>
-------------------------	---	---------------------------	--------------------------------



CATEGORY	A	B	C	D
LPV DA		1520-1 1/8	329 (400-1 1/8)	
LNAV/VNAV DA		1516-1 1/8	325 (400-1 1/8)	
LNAV MDA	1620-1	429 (500-1)	1620-1 1/4	429 (500-1 1/4)



EC-2, 26 DEC 2024 to 23 JAN 2025

EC-2, 26 DEC 2024 to 23 JAN 2025