

EL DORADO ONE DEPARTURE

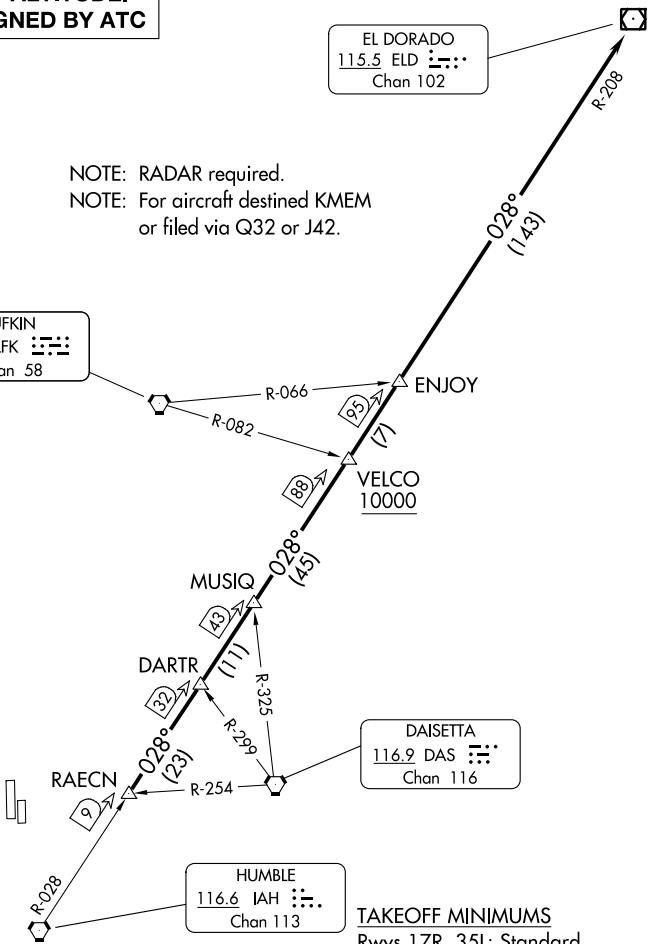
ATIS
128.375
CLNC DEL
119.45
GND CON
121.8 239.0
HOOKS TOWER★
127.4 354.1 (EAST)
118.4 (CTAF) 354.1 (WEST)
HOUSTON DEP CON
119.7 281.4

**TOP ALTITUDE:
ASSIGNED BY ATC**

EL DORADO
115.5 ELD :
Chan 102

NOTE: RADAR required.
NOTE: For aircraft destined KMEM
or filed via Q32 or J42.

LUFKIN
112.1 LFK :
Chan 58



DAISETTA
116.9 DAS :
Chan 116

HUMBLE
116.6 IAH :
Chan 113

TAKEOFF MINIMUMS
Rwys 17R, 35L: Standard.
Rwys 17L, 35R: NA - Environmental.
Waterway 17, 35: NA - Air Traffic.

NOTE: Chart not to scale.

DEPARTURE ROUTE DESCRIPTION

TAKEOFF ALL RUNWAYS: When entering controlled airspace, climb on assigned heading for RADAR vectors to RAECN INT. Maintain ATC assigned altitude. Expect filed altitude 10 minutes after departure, thence. . . .

. . . . on IAH R-028 and the ELD R-208 to ELD VOR/DME, cross VELCO INT at or above 10000.

SC-5, 26 DEC 2024 to 23 JAN 2025

SC-5, 26 DEC 2024 to 23 JAN 2025