

ATIS  
 128.375  
 CLNC DEL  
 119.45  
 GND CON  
 121.8 239.0  
 HOOKS TOWER ★  
 127.4 354.1 (EAST)  
 118.4 (CTAF) 354.1 (WEST)  
 HOUSTON DEP CON  
 119.7 281.4

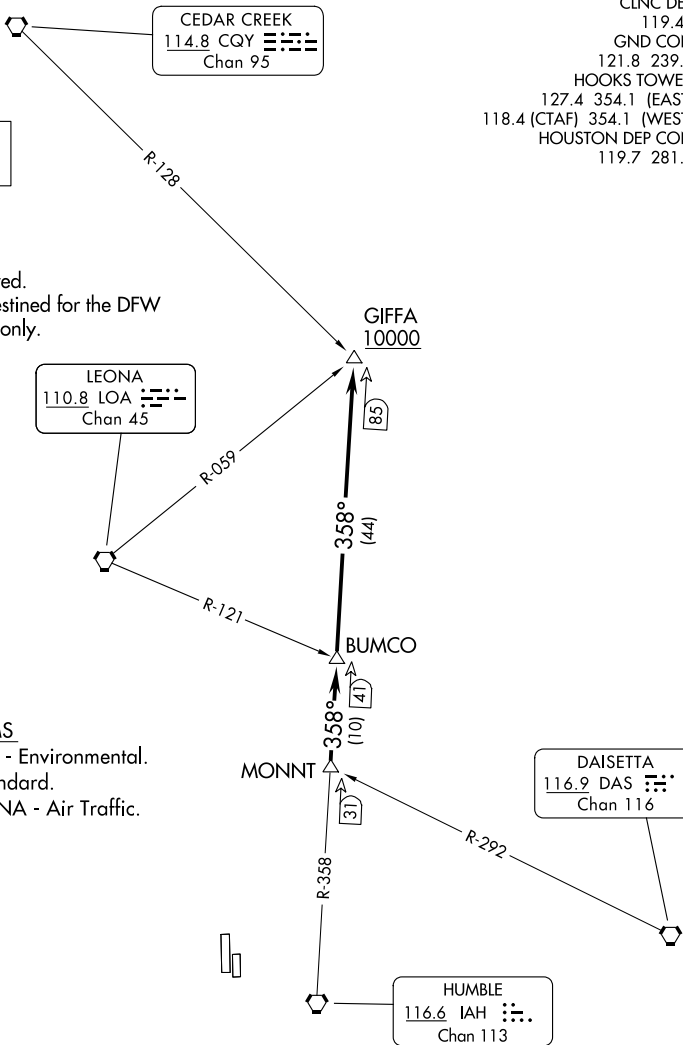
**TOP ALTITUDE:  
ASSIGNED BY ATC**

NOTE: RADAR required.  
 NOTE: For aircraft destined for the DFW  
 terminal area only.

### TAKEOFF MINIMUMS

Rws 17L, 35R: NA - Environmental.  
 Rws 17R, 35L: Standard.  
 Waterway 17, 35: NA - Air Traffic.

NOTE: Chart not to scale.



SC-5, 26 DEC 2024 to 23 JAN 2025

SC-5, 26 DEC 2024 to 23 JAN 2025

## DEPARTURE ROUTE DESCRIPTION

**TAKEOFF ALL RUNWAYS:** When entering controlled airspace, climb on assigned heading for RADAR vectors to MONNT INT. Maintain ATC assigned altitude. Expect filed altitude 10 minutes after departure, thence. . . .

. . . .on IAH R-358 to cross GIFFA INT at or above 10000.