

(STYCK8.STYCK) 21280

AL-5457 (FAA)

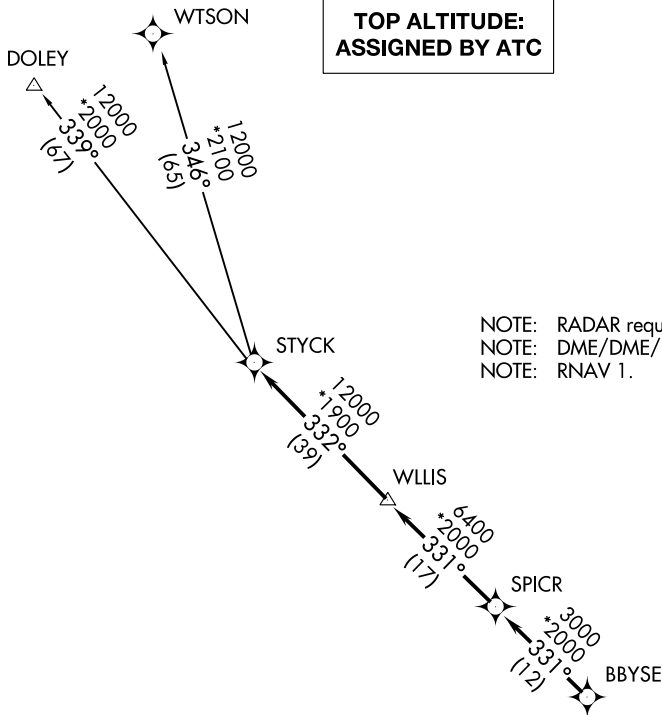
DAVID WAYNE HOOKS MEML (DWH)

STYCK EIGHT DEPARTURE (RNAV)

HOUSTON, TEXAS

**TOP ALTITUDE:
ASSIGNED BY ATC**

ATIS 128.375
 CLNC DEL 119.45
 GND CON 121.8 239.0
 HOOKS TOWER ★ 127.4 354.1 (EAST)
 118.4 (CTAF) 354.1 (WEST)
 HOUSTON DEP CON 119.7 281.4



NOTE: RADAR required.
 NOTE: DME/DME/IRU or GPS required.
 NOTE: RNAV 1.

TAKEOFF MINIMUMS

Rwys 17L, 35R: NA-Environmental.

Waterways 17, 35: NA-Air traffic.

Rwys 17R, 35L: Standard with minimum climb of 500' per NM to 660.

NOTE: Chart not to scale.

DEPARTURE ROUTE DESCRIPTION

TAKEOFF RUNWAY 17R: Climb on heading 168° to 660 for RADAR vectors to BBYSE, thence. . .

TAKEOFF RUNWAY 35L: Climb on heading 348° to 660 for RADAR vectors to BBYSE, thence. . .

. . . on track 331° to SPICR, then on track 331° to WLLIS, then on track 332° to STYCK, then on (transition). Maintain ATC assigned altitude. Expect filed altitude 10 minutes after departure.

DOLEY TRANSITION (STYCK8.DOLEY)

WTSON TRANSITION (STYCK8.WTSON)

STYCK EIGHT DEPARTURE (RNAV)

(STYCK8.STYCK) 07OCT21

HOUSTON, TEXAS

DAVID WAYNE HOOKS MEML (DWH)

SC-5, 26 DEC 2024 to 23 JAN 2025

SC-5, 26 DEC 2024 to 23 JAN 2025