

WAAS CH <b>90409</b> <b>W12A</b>	APP CRS <b>120°</b>	Rwy Idg TDZE Apt Elev	<b>5000</b> <b>1274</b> <b>1274</b>
--	------------------------	-----------------------------	---

# RNAV (GPS) RWY 12

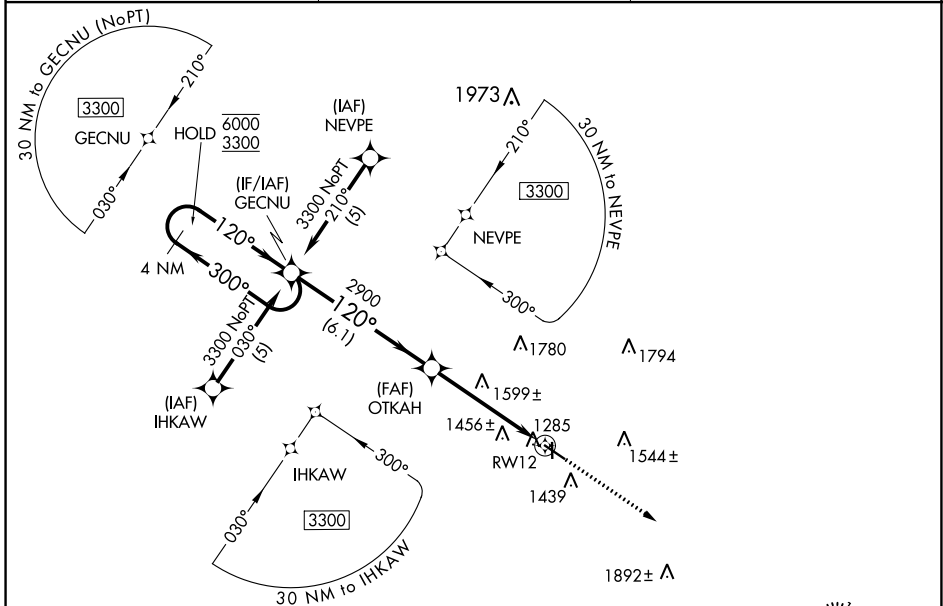
DENISON MUNI (DNS)

RNP APCH-GPS.

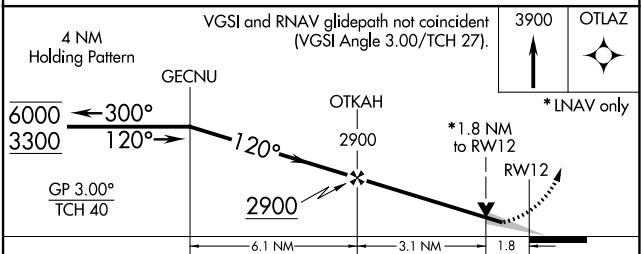
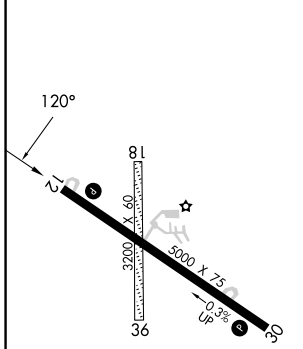
**⚠** Circling NA to Rwys 18 and 36. For uncompensated Baro-VNAV systems, LNAV/VNAV NA below -17°C or above 54°C. Baro-VNAV and VDP NA when using Carroll altimeter setting.  
**⚠** When local altimeter setting not received, use Carroll altimeter setting; increase LPV DA 1596 feet, LNAV/VNAV DA to 1626 feet; increase all MDAs 80 feet and visibility LNAV Cat C 1/8 SM and Circling Cat C 1/4 SM.

MISSED APPROACH:  
Climb to 3900 direct  
OTLAZ and hold.

AWOS-3 <b>119.95</b>	MINNEAPOLIS CENTER <b>119.6 290.4</b>	UNICOM <b>122.8 (CTAF) 0</b>
-------------------------	--	---------------------------------



ELEV 1274	TDZE 1274
-----------	-----------



CATEGORY	A	B	C	D
LPV DA		1524-1	250 (300-1)	NA
LNAV/VNAV DA		1554-1	280 (300-1)	NA
LNAV MDA	1860-1	586 (600-1)	1860-1 3/4 586 (600-1 3/4)	NA
CIRCLING	1860-1 586 (600-1)	1880-1 606 (700-1)	2100-2 1/2 826 (900-2 1/2)	NA

DENISON, IOWA  
Amdt 1C 15JUL21

41°59'N-95°23'W

# DENISON MUNI (DNS) RNAV (GPS) RWY 12

NC-3, 26 DEC 2024 to 23 JAN 2025

NC-3, 26 DEC 2024 to 23 JAN 2025