

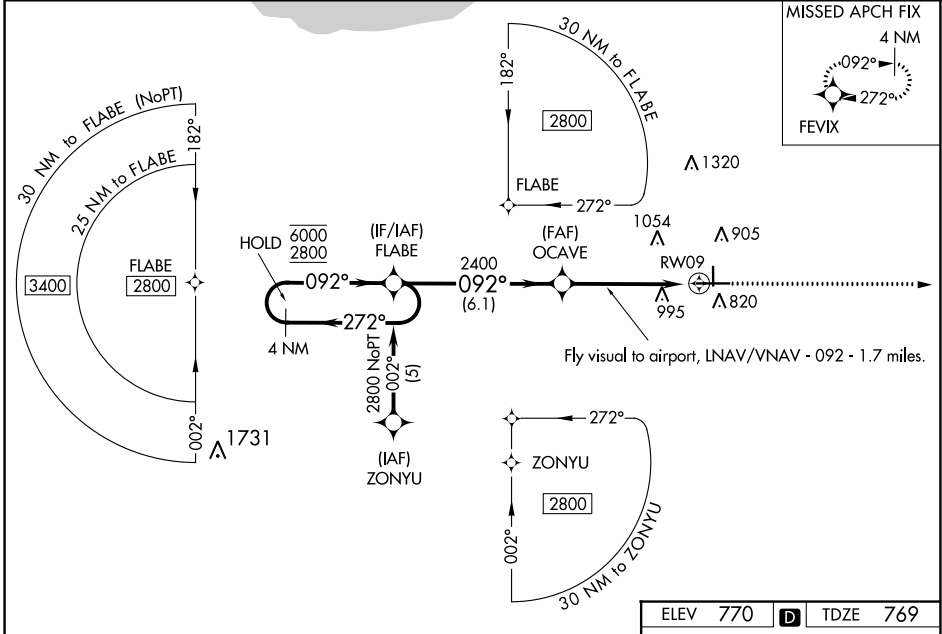
WAAS CH <b>42606</b> <b>W09A</b>	APP CRS <b>092°</b>	Rwy Idg TDZE Apt Elev	<b>6500</b> <b>769</b> <b>770</b>
--	------------------------	-----------------------------	---

# RNAV (GPS) RWY 9

PORTER COUNTY RGNL (VPZ)

RNP APCH.	MISSED APPROACH: Climb to 2600 direct FEVIX and hold.
	Rwy 9 helicopter visibility reduction below 3/4 SM NA. For uncompensated Baro-VNAV systems, LNAV/VNAV NA below -16°C or above 47°C.

ASOS <b>125.875</b>	SOUTH BEND APP CON * <b>132.05 257.8</b>	CLNC DEL <b>120.525</b>	UNICOM <b>122.725 (CTAF)</b>
------------------------	---	----------------------------	---------------------------------



EC-2, 26 DEC 2024 to 23 JAN 2025

EC-2, 26 DEC 2024 to 23 JAN 2025

Fly visual to airport, LNAV/VNAV - 092 - 1.7 miles.		ELEV 770	<b>D</b>	TDZE 769
<p>4 NM Holding Pattern</p> <p>FLABE</p> <p>OCAVE</p> <p>RW09</p> <p>GP 3.00° TCH 45</p> <p>*LNAV only.</p>		2600	FEVIX	
<p>6.1 NM</p> <p>3.5 NM</p> <p>1.4 NM</p>				
CATEGORY	A	B	C	D
LPV DA		1038-1	269 (300-1)	
LNAV/VNAV DA		1369-2	600 (600-2)	
LNAV MDA	1260-1	491 (500-1)	1260-1 1/4 491 (500-1 1/4)	1260-1 1/2 491 (500-1 1/2)
CIRCLING	1260-1 490 (500-1)	1300-1 530 (600-1)	1360-1 1/2 590 (600-1 1/2)	1620-2 3/4 850 (900-2 3/4)
VALPARAISO, INDIANA		PORTER COUNTY RGNL (VPZ)		
Amdt 1B 09SEP21		41°27'N-87°00'W		
		<b>RNAV (GPS) RWY 9</b>		

HIRL Rwy 9-27  
MIRL Rwy 18-36  
REIL Rws 9, 18 and 36