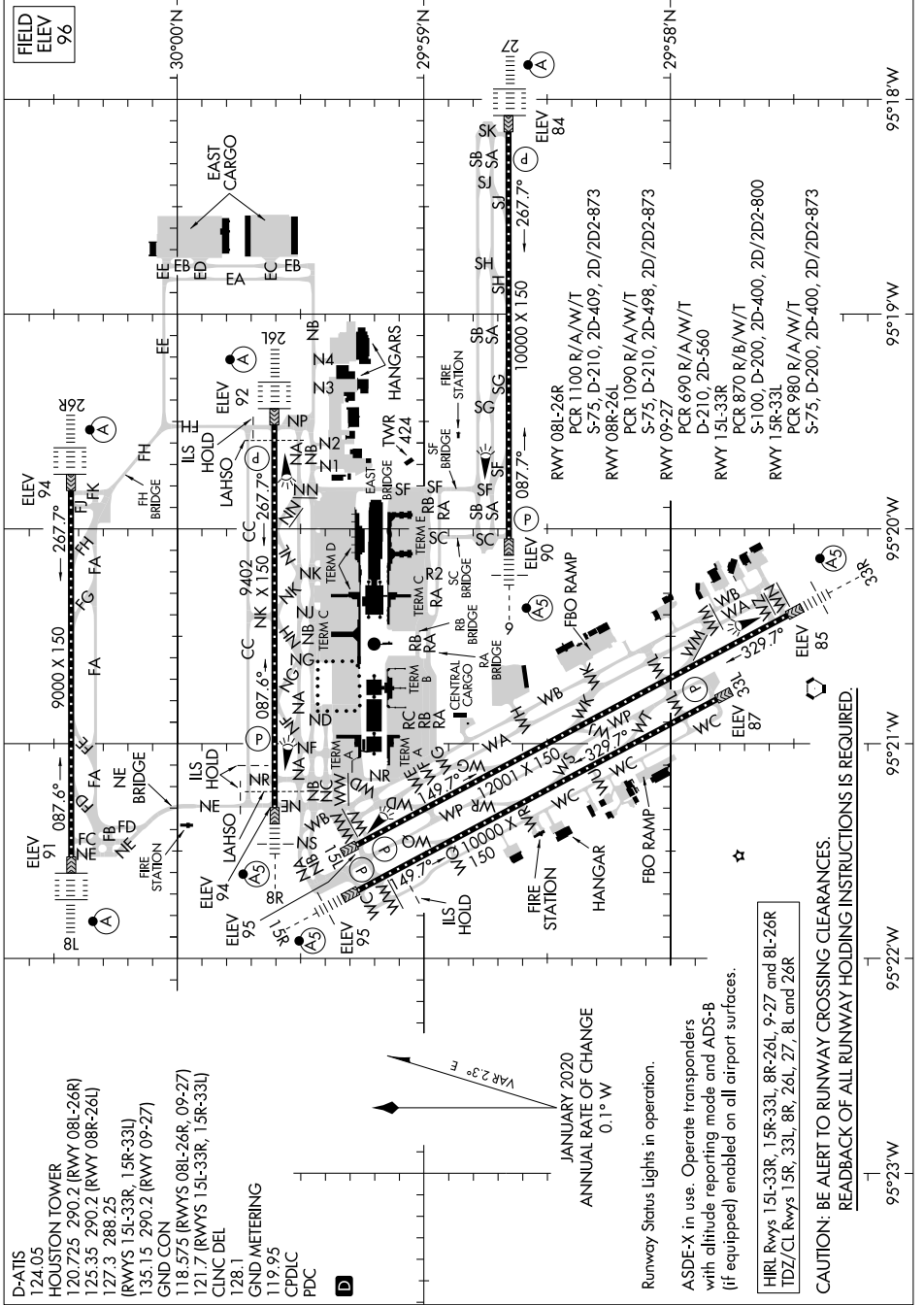


24361 **AIRPORT DIAGRAM** GEORGE BUSH INTCNL/HOUSTON (IAH) HOUSTON, TEXAS

AL-5461 (FAA)



- D-ATIS 124.05
- HOUSTON TOWER 120.725 290.2 (RWY 08L-26R)
- 125.35 290.2 (RWY 08R-26L)
- 127.3 288.25
- (RWYS 15L-33R, 15R-33L)
- (RWYS 15L-33R, 15R-33L)
- GND CON 135.15 290.2 (RWY 09-27)
- 118.575 (RWYS 08L-26R, 09-27)
- 121.7 (RWYS 15L-33R, 15R-33L)
- 128.1 CLNC DEL
- GND METERING 119.95
- CPDIC
- PDC

AIRPORT DIAGRAM

24361

HOUSTON, TEXAS
GEORGE BUSH INTCNL/HOUSTON (IAH)

SC-5, 26 DEC 2024 to 23 JAN 2025

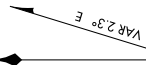
SC-5, 26 DEC 2024 to 23 JAN 2025

HIRL RWYS 15L-33R, 15R-33L, 8R-26L, 9-27 and 8L-26R
TDZ/CL RWYS 15R, 33L, 8R, 26L, 27, 8L and 26R

CAUTION: BE ALERT TO RUNWAY CROSSING CLEARANCES.
READBACK OF ALL RUNWAY HOLDING INSTRUCTIONS IS REQUIRED

Runway Status Lights in operation.
ASDE-X in use. Operate transponder's with altitude reporting mode and ADS-B (if equipped) enabled on all airport surfaces.

JANUARY 2020
ANNUAL RATE OF CHANGE
0.1° W



FIELD ELEV 96