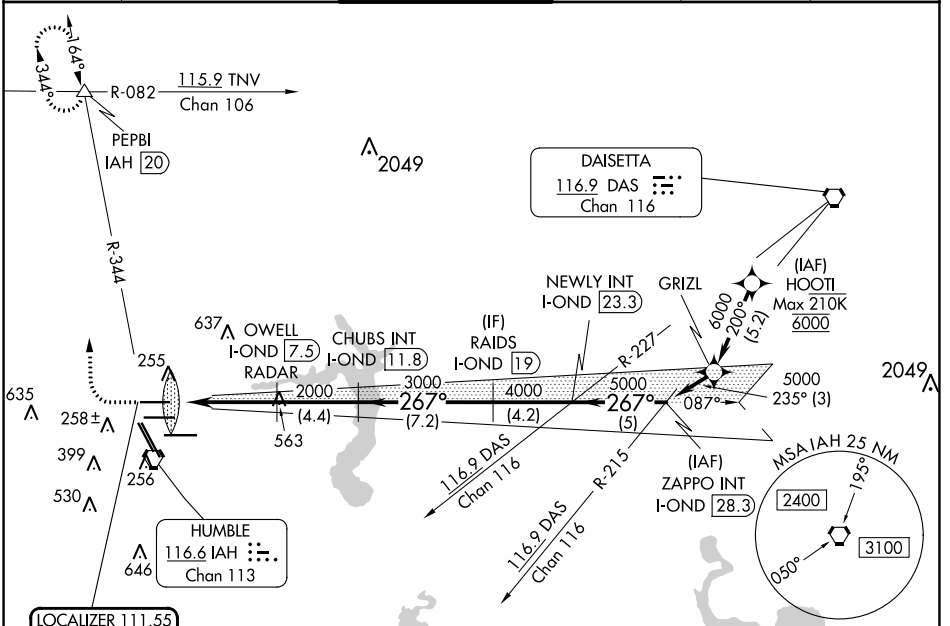


LOC/DME I-OND <b>111.55</b> Chan <b>52 (Y)</b>	APP CRS <b>267°</b>	Rwy Idg TDZE <b>95</b> Apt Elev <b>96</b>	<b>9000</b>
--	------------------------	---	-------------

# ILS RWY 26R (SA CAT I)

GEORGE BUSH INTCNL/HOUSTON (IAH)

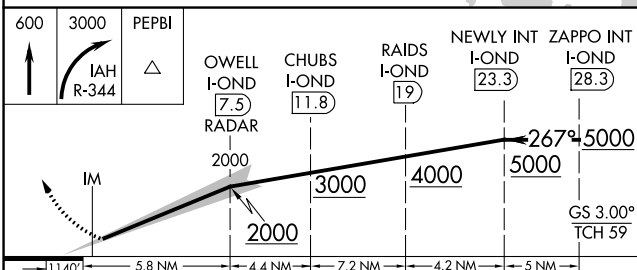
DME required. From HOOI: RNAV 1-GPS required.		ALSF-2 	MISSED APPROACH: Climb to 600 then climbing right turn to 3000 on IAH VORTAC R-344 to PEPBI INT/IAH 20 DME and hold.				
Simultaneous approach authorized with Rwy 26L and Rwy 27. Requires specific OPSPEC, MSPEC or LOA approval and use of HUD to DH.		D-ATIS <b>124.05</b>	HOUSTON APP CON <b>120.05 379.1 EAST</b> <b>124.35 316.15 WEST</b>	HOUSTON TOWER <b>120.725 290.2</b>	GND CON <b>118.575</b>	CLNC DEL <b>128.1</b>	CPDLC



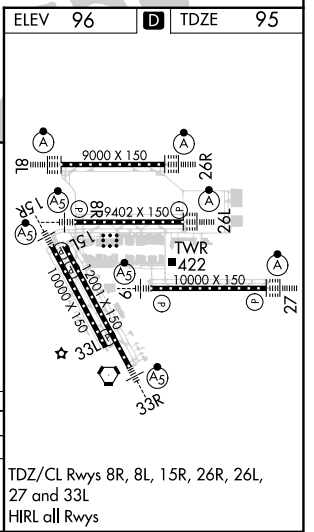
SC-5, 26 DEC 2024 to 23 JAN 2025

SC-5, 26 DEC 2024 to 23 JAN 2025

ELEV <b>96</b>	<b>D</b> TDZE <b>95</b>
----------------	-------------------------



600	3000	PEPBI			
↑	↘ IAH R-344	△			
OWELL I-OND (7.5) RADAR	CHUBS I-OND (11.8)	RAIDS I-OND (19)			
NEWLY INT I-OND (23.3)	ZAPPO INT I-OND (28.3)				
2000	3000	4000	5000		
1140'	5.8 NM	4.4 NM	7.2 NM	4.2 NM	5 NM
CATEGORY	A	B	C	D	
S-ILS-26R	RA 157/14 150 DA 245				



TDZ/CL Rwy's 8R, 8L, 15R, 26R, 26L, 27 and 33L  
HIRL all Rwy's