

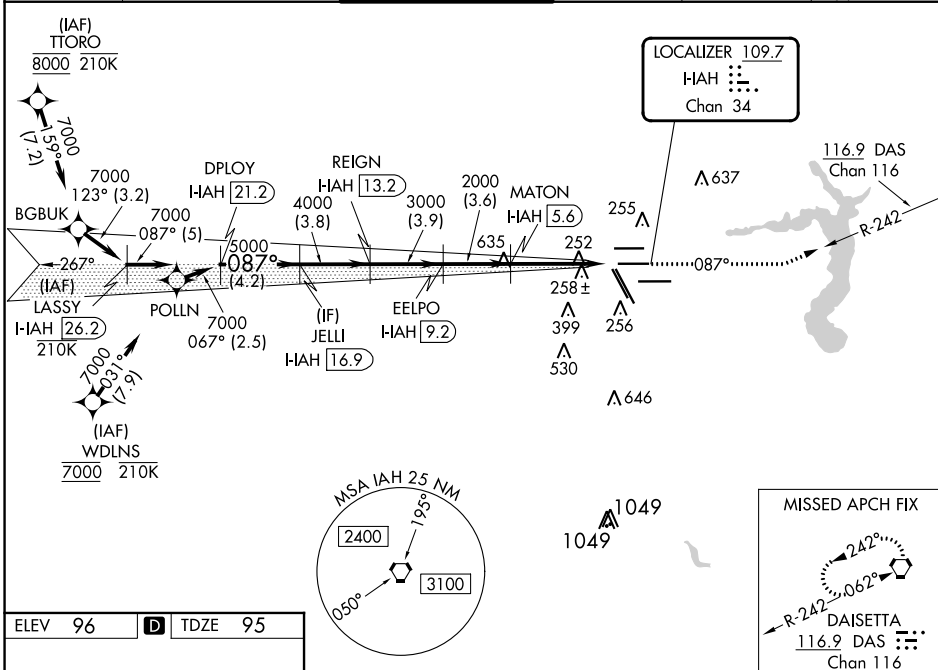
LOC/DME I-IAH 109.7 Chan 34	APP CRS 087°	Rwy Idg 9402 TDZE 95 Apt Elev 96
---	------------------------	---

ILS RWY 8R (SA CAT I & II)

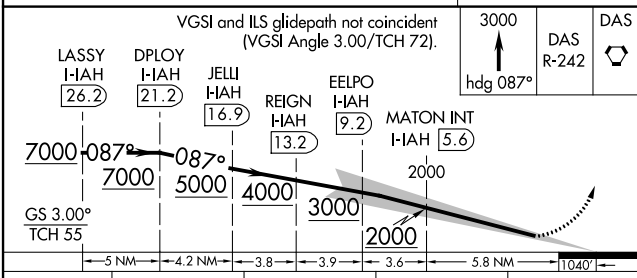
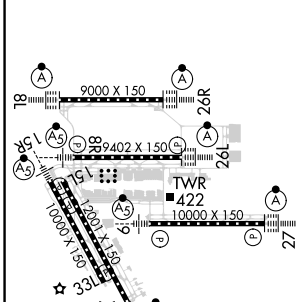
GEORGE BUSH INTCNL/HOUSTON (IAH)

RNAV 1-GPS or RADAR required for procedure entry, DME.		MALSR 	MISSED APPROACH: Climb to 3000 on heading 087° and on DAS VORTAC R-242 to DAS VORTAC and hold.
Simultaneous approach authorized. SA CAT I: Requires specific OPSPEC, MSPEC, or LOA approval and use of HUD to DH. SA CAT II: Reduced lighting: requires specific OPSPEC, MSPEC, or LOA approval and use of autoland or HUD to touchdown.			

D-ATIS 124.05	HOUSTON APP CON 120.05 379.1 EAST 124.35 316.15 WEST	HOUSTON TOWER 125.35 290.2	GND CON 118.575	CLNC DEL 128.1	CPDLC A 2049
-------------------------	--	--------------------------------------	---------------------------	--------------------------	-----------------



ELEV 96	D	TDZE 95
---------	----------	---------



CATEGORY	A	B	C	D
S-ILS 8R	SA CAT I RA 152/14	150	DA 245	
S-ILS 8R	SA CAT II RA 102/12	100	DA 195	

SA CATEGORY I and II ILS SPECIAL AIRCREW & AIRCRAFT CERTIFICATION REQUIRED

TDZ/CL Rwy's 8R, 8L, 15R, 26R, 26L, 27 and 33L
HIRL all Rwy's

SC-5, 26 DEC 2024 to 23 JAN 2025

SC-5, 26 DEC 2024 to 23 JAN 2025