

LOC/DME I-JYV <b>109.7</b> Chan <b>34</b>	APP CRS <b>267°</b>	Rwy Idg <b>9402</b> TDZE <b>95</b> Apt Elev <b>96</b>
---	------------------------	---

# ILS or LOC RWY 26L

GEORGE BUSH INTCNL/HOUSTON (IAH)

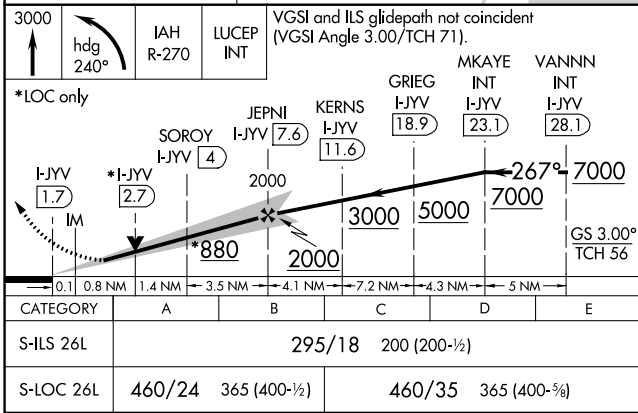
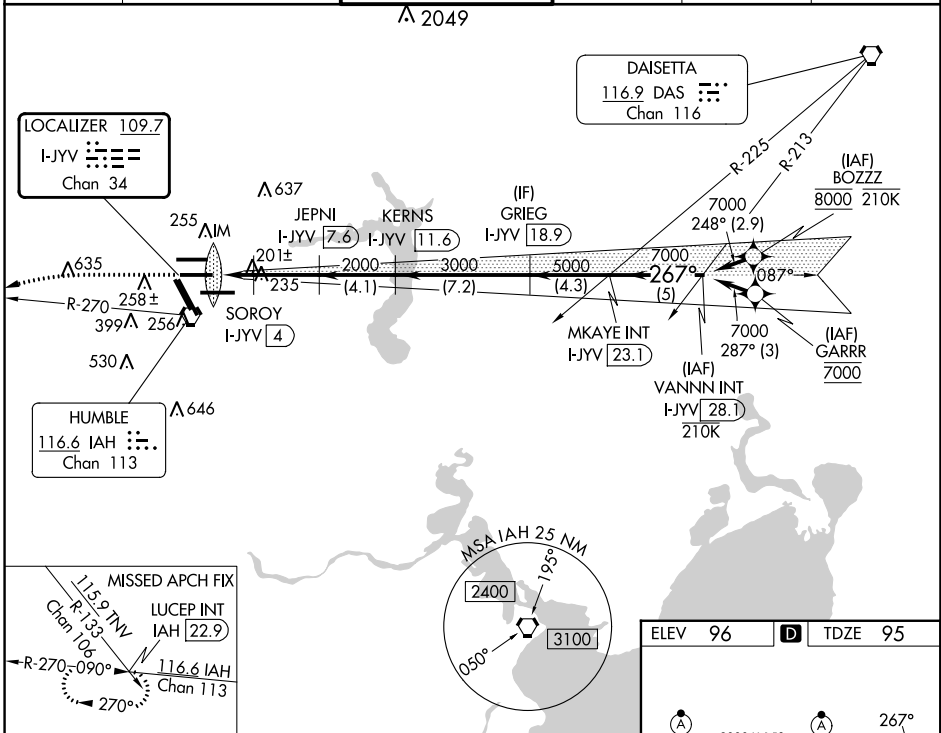
DME required. From BOZZZ, GARRR: RNAV 1-GPS required.

⚠ Simultaneous approach authorized with Rwy 26R and Rwy 27. For inop ALS, increase S-ILS 26L Cat E visibility to RVR 4000, S-LOC 26L Cat C/D/E visibility to RVR 5000.

ALSF-2

MISSED APPROACH: Climb to 3000 then left turn heading 240° and IAH VORTAC R-270 to LUCEP INT/IAH 22.9 DME and hold.

D-ATIS <b>124.05</b>	HOUSTON APP CON <b>120.05 379.1</b> EAST <b>124.35 316.15</b> WEST	HOUSTON TOWER <b>125.35 290.2</b>	GND CON <b>118.575</b>	CLNC DEL <b>128.1</b>	CPDLC
-------------------------	--	--------------------------------------	---------------------------	--------------------------	-------



ELEV 96	<b>D</b>	TDZE 95
---------	----------	---------

Detailed airport diagram showing runways (8R, 8L, 15R, 26R, 26L, 27, 33L), taxiways, and tower location (422).

TDZ/CL Rwy 8R, 8L, 15R, 26R, 26L, 27 and 33L	FAF to MAP 5.8 NM
HIRL all Rwys	
Knots	60 90 120 150 180
Min:Sec	5:48 3:52 2:54 2:19 1:56

SC-5, 26 DEC 2024 to 23 JAN 2025

SC-5, 26 DEC 2024 to 23 JAN 2025