

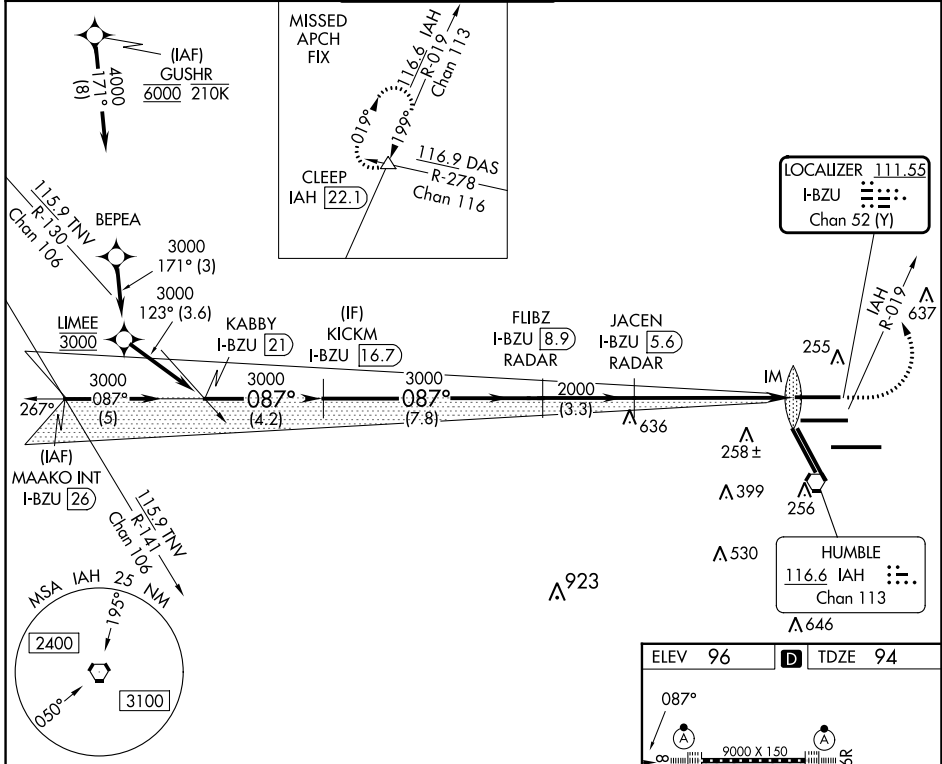
LOC/DME I-BZU 111.55 Chan 52 (Y)	APP CRS 087°	Rwy Idg TDZE Apt Elev	9000 94 96
--	------------------------	-----------------------------	---------------------------------------

ILS or LOC RWY 8L

GEORGE BUSH INTCNL/HOUSTON (IAH)

DME required. From GUSHR. RNAV 1-GPS required.		ALSF-2 	MISSED APPROACH: Climb to 600 then climbing left turn to 4000 on IAH VORTAC R-019 to CLEEP INT/IAH 22.1 DME and hold.
Simultaneous approach authorized with Rwy 8R and Rwy 9.			

ATIS 124.05	HOUSTON APP CON 120.05 379.1 EAST 124.35 316.15 WEST	HOUSTON TOWER 120.725 290.2	GND CON 118.575	CLNC DEL 128.1	CPDLC
-----------------------	--	---------------------------------------	---------------------------	--------------------------	-------



SC-5, 26 DEC 2024 to 23 JAN 2025

SC-5, 26 DEC 2024 to 23 JAN 2025

ELEV 96		D TDZE 94	
TDZ/CL Rwy 8R, 8L, 15R, 26R, 26L, 27 and 33L HIRL all Rwys			
FAF to MAP 5.8 NM			
Knots	60	90	120 150 180
Min:Sec	5:48	3:52	2:54 2:19 1:56