

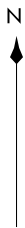
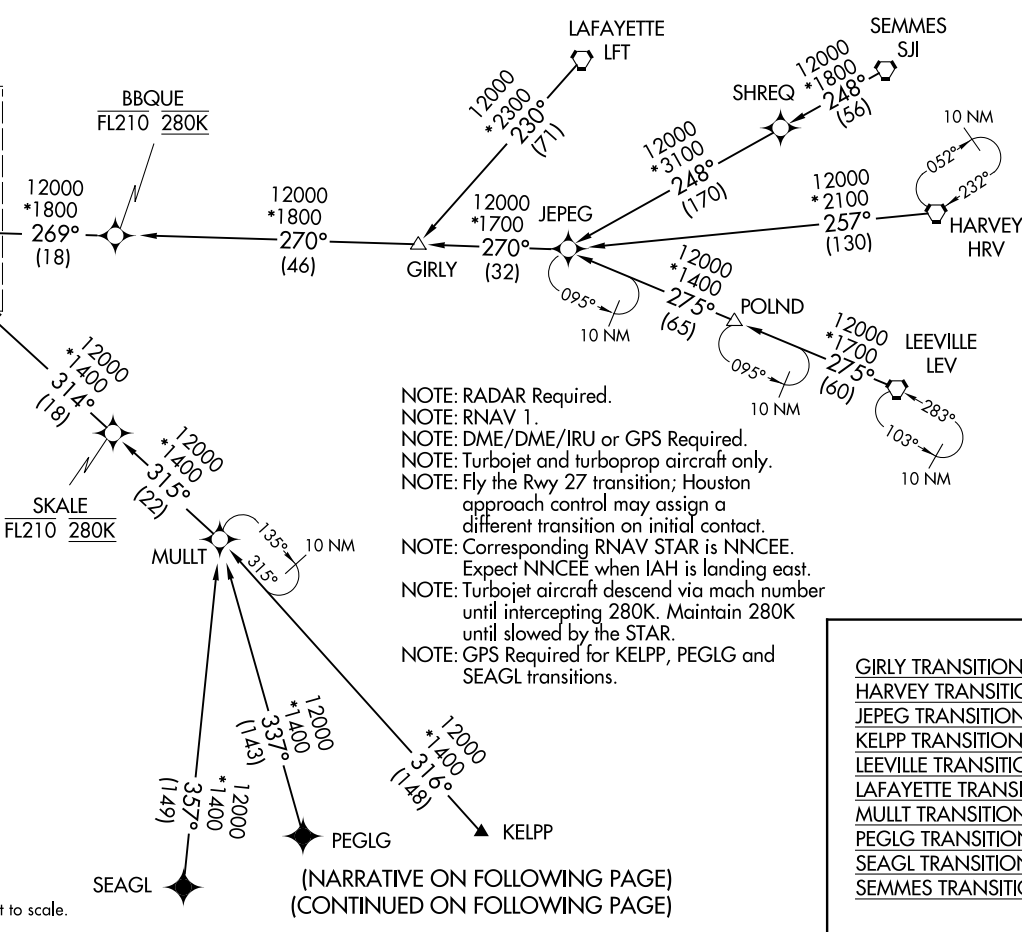
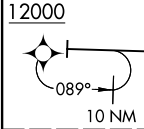
HOUSTON APP CON
119.625 226.675
D-ATIS
124.05

(LINKK.LINKK1) 221.39 AL-5461 (FAA) GEORGE BUSH INTCNL/HOUSTON (IAH) HOUSTON, TEXAS

LINKK ONE ARRIVAL (RNAV) Transition Routes
(LINKK.LINKK1) 30APR15 GEORGE BUSH INTCNL/HOUSTON (IAH) HOUSTON, TEXAS

See following page for Arrival routes.

LINKK
15000 250K
12000



- NOTE: RADAR Required.
- NOTE: RNAV 1.
- NOTE: DME/DME/IRU or GPS Required.
- NOTE: Turbojet and turboprop aircraft only.
- NOTE: Fly the Rwy 27 transition; Houston approach control may assign a different transition on initial contact.
- NOTE: Corresponding RNAV STAR is NNCEE. Expect NNCEE when IAH is landing east.
- NOTE: Turbojet aircraft descend via mach number until intercepting 280K. Maintain 280K until slowed by the STAR.
- NOTE: GPS Required for KELPP, PEGLG and SEAGL transitions.

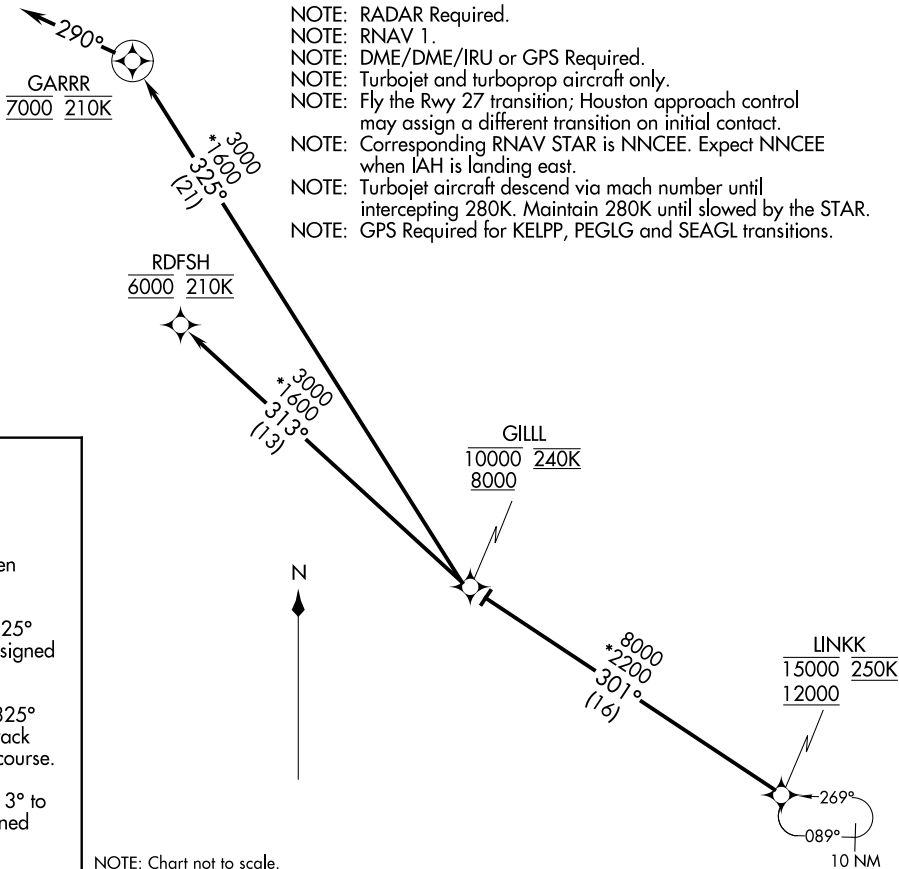
- GIRLY TRANSITION (GIRLY.LINKK1);
- HARVEY TRANSITION (HRV.LINKK1);
- JEPEG TRANSITION (JEPEG.LINKK1);
- KELPP TRANSITION (KELPP.LINKK1);
- LEEVILLE TRANSITION (LEV.LINKK1);
- LAFAYETTE TRANSITION (LFT.LINKK1);
- MULT TRANSITION (MULT.LINKK1);
- PEGLG TRANSITION (PEGLG.LINKK1);
- SEAGL TRANSITION (SEAGL.LINKK1);
- SEMMES TRANSITION (SJI.LINKK1);

(NARRATIVE ON FOLLOWING PAGE)
(CONTINUED ON FOLLOWING PAGE)

NOTE: Chart not to scale.

LINKK ONE ARRIVAL (RNAV) Arrival Routes
 (LINKK, LINKK1) 30APR15
 HOUSTON, TEXAS
 GEORGE BUSH INTCNL/HOUSTON (IAH)

HOUSTON APP CON
 119.625 226.675
 D-ATIS
 124.05



- NOTE: RADAR Required.
- NOTE: RNAV 1.
- NOTE: DME/DME/IRU or GPS Required.
- NOTE: Turbojet and turboprop aircraft only.
- NOTE: Fly the Rwy 27 transition; Houston approach control may assign a different transition on initial contact.
- NOTE: Corresponding RNAV STAR is NNCEE. Expect NNCEE when IAH is landing east.
- NOTE: Turbojet aircraft descend via mach number until intercepting 280K. Maintain 280K until slowed by the STAR.
- NOTE: GPS Required for KELPP, PEGLG and SEAGL transitions.

ARRIVAL ROUTE DESCRIPTION

From LINKK on track 301° to cross GILL between 8000 and 10000 and at 240K.

LANDING RUNWAY 26L: From GILL on track 325° to cross GARRR at 7000 and at 210K. Expect assigned instrument approach RWY 26L.

LANDING RUNWAY 26R: From GILL on track 325° to cross GARRR at 7000 and at 210K, then on track 290° at 210K. Expect vectors to final approach course.

LANDING RUNWAY 27: From GILL on track 313° to cross RDFSH at 6000 and at 210K. Expect assigned instrument approach RWY 27.

NOTE: Chart not to scale.

(LINKK, LINKK1) 21112
 AL-5461 (FAA)
 GEORGE BUSH INTCNL/HOUSTON (IAH)
 HOUSTON, TEXAS
 LINKK ONE ARRIVAL (RNAV) Arrival Routes