

(LFK3.LFK) 24137

LUFKIN THREE DEPARTURE

AL-5461 (FAA)

GEORGE BUSH INTCNL/HOUSTON (IAH)
HOUSTON, TEXAS

D-ATIS
124.05
CLNC DEL
128.1
CPDLC
GND CON
118.575 (Rwys 8L/R, 26L/R, 9/27)
121.7 (Rwys 15L/R, 33L/R)
HOUSTON TOWER
120.725 290.2 (Rwys 8L/26R)
125.35 290.2 (Rwys 8R/26L)
127.3 288.25 (Rwys 15L/R, 33L/R)
135.15 290.2 (Rwys 9/27)
HOUSTON DEP CON
132.25 285.425

**TOP ALTITUDE:
16000**

LITTLE ROCK
113.9 LIT
Chan 86

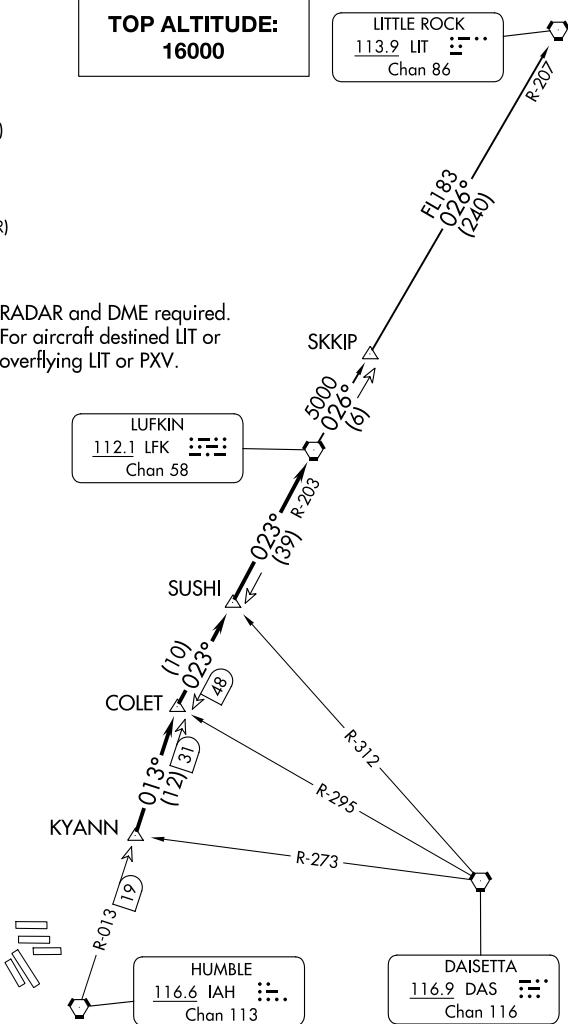
NOTE: RADAR and DME required.
NOTE: For aircraft destined LIT or
overflying LIT or PXV.

LUFKIN
112.1 LFK
Chan 58

DAISETTA
116.9 DAS
Chan 116

HUMBLE
116.6 IAH
Chan 113

TAKEOFF MINIMUMS:
Rwys 8L/R, 9, 15L/R, 26L/R, 27, 33L/R: Standard.



NOTE: Chart not to scale.

(CONTINUED ON FOLLOWING PAGE)

LUFKIN THREE DEPARTURE
(LFK3.LFK) 07OCT21

HOUSTON, TEXAS
GEORGE BUSH INTCNL/HOUSTON (IAH)

SC-5, 26 DEC 2024 to 23 JAN 2025

SC-5, 26 DEC 2024 to 23 JAN 2025

(LFK3.LFK) 21280

LUFKIN THREE DEPARTURE

AL-5461 (FAA)

GEORGE BUSH INTCNTL/HOUSTON (IAH)
HOUSTON, TEXAS



DEPARTURE ROUTE DESCRIPTION

TAKEOFF ALL RUNWAYS: Climb on assigned heading for RADAR vectors to KYANN INT, maintain 16000. Expect filed altitude 10 minutes after departure, thence. . . .

. . . .on IAH R-013 to COLET INT, then right turn on LFK R-203 to LFK VORTAC.

LITTLE ROCK TRANSITION (LFK3.LIT): From over LFK VORTAC on LFK R-026 to SKKIP INT, then on LFK R-026 and LIT R-207 to LIT VORTAC.

SC-5, 26 DEC 2024 to 23 JAN 2025

SC-5, 26 DEC 2024 to 23 JAN 2025

LUFKIN THREE DEPARTURE

(LFK3.LFK) 07OCT21

HOUSTON, TEXAS
GEORGE BUSH INTCNTL/HOUSTON (IAH)