

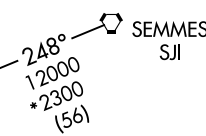
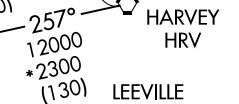
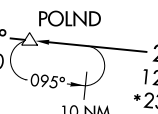
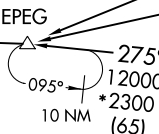
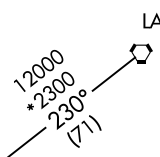
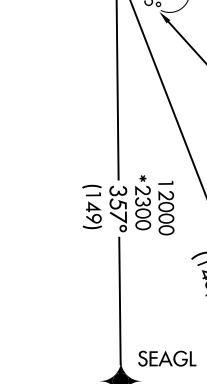
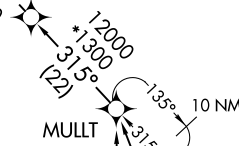
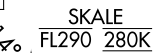
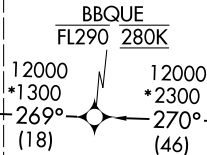
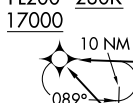
RNAV 1 - DME/DME/IRU or GPS.

RADAR required.

HOUSTON APP CON
119.625 226.675
D-ATIS
124.05

See following page
for arrival routes.

LINKK
FL200 280K
17000



- NOTE: Jet and turboprop aircraft only.
- NOTE: Fly the runway 8R/9 transition; Houston Approach Control may assign a different transition on initial contact.
- NOTE: Corresponding RNAV STAR is LINKK. Expect LINKK when IAH is landing west.
- NOTE: Jet aircraft descend via mach number until intercepting 280K. Maintain 280K until slowed by the STAR.
- NOTE: GPS required for KELPP, PEGLG and SEAGL Transitions.

- GIRLY TRANSITION (GIRLY.NNC EE2)
- HARVEY TRANSITION (HRV.NNC EE2)
- JEPEG TRANSITION (JEPEG.NNC EE2)
- KELPP TRANSITION (KELPP.NNC EE2)
- LAFAYETTE TRANSITION (LFT.NNC EE2)
- LEEVILLE TRANSITION (LEV.NNC EE2)
- MULLT TRANSITION (MULLT.NNC EE2)
- PEGLG TRANSITION (PEGLG.NNC EE2)
- SEAGL TRANSITION (SEAGL.NNC EE2)
- SEMMES TRANSITION (SJJ.NNC EE2)

(NARRATIVE ON FOLLOWING PAGE)
(CONTINUED ON FOLLOWING PAGE)

NOTE: Chart not to scale.

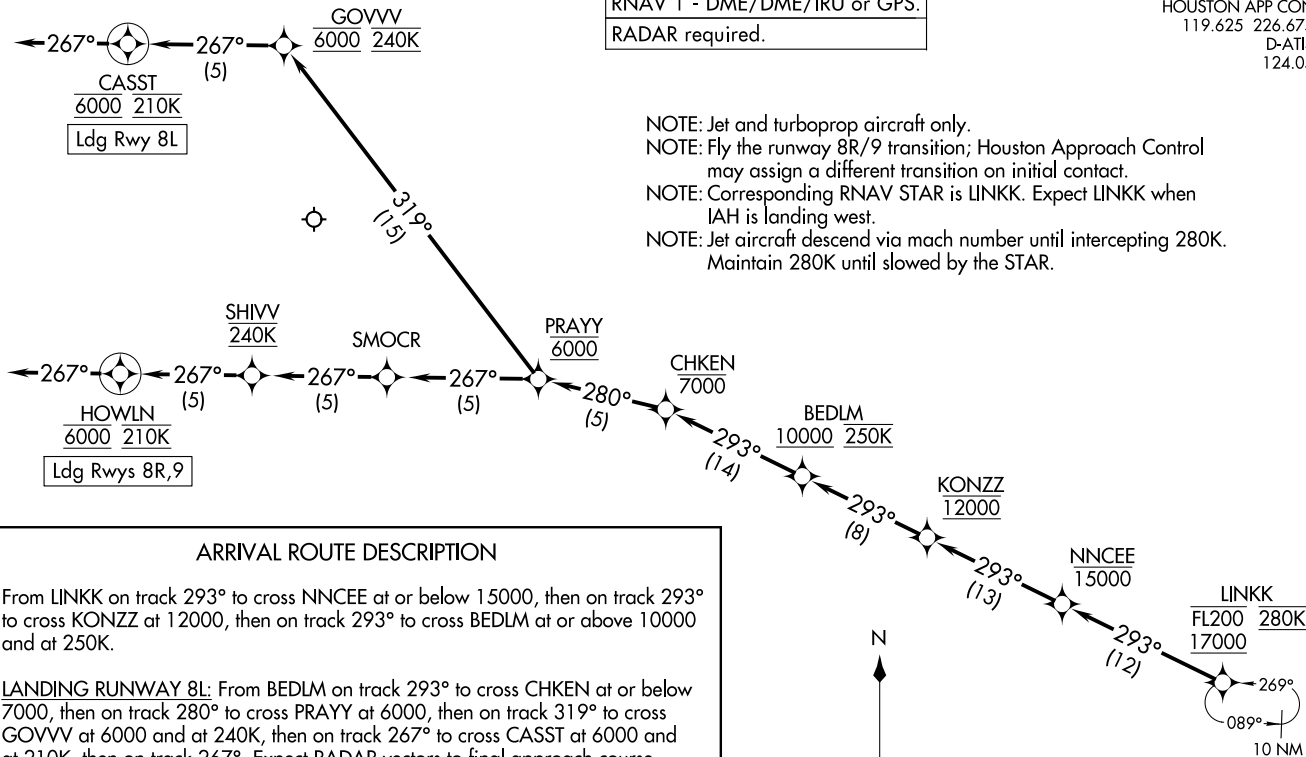
NANCEE TWO ARRIVAL (RNAV) Transition Routes
(LINKK, NANCEE2) 30NOV23
HOUSTON, TEXAS
GEORGE BUSH INTCNL/HOUSTON (IAH)

(LINKK, NANCEE2) 23334
NANCEE TWO ARRIVAL (RNAV) Transition Routes
AL-5461 (FAA)
GEORGE BUSH INTCNL/HOUSTON (IAH)
HOUSTON, TEXAS

RNAV 1 - DME/DME/IRU or GPS.
RADAR required.

HOUSTON APP CON
119.625 226.675
D-ATIS
124.05

- NOTE: Jet and turboprop aircraft only.
- NOTE: Fly the runway 8R/9 transition; Houston Approach Control may assign a different transition on initial contact.
- NOTE: Corresponding RNAV STAR is LINKK. Expect LINKK when IAH is landing west.
- NOTE: Jet aircraft descend via mach number until intercepting 280K. Maintain 280K until slowed by the STAR.

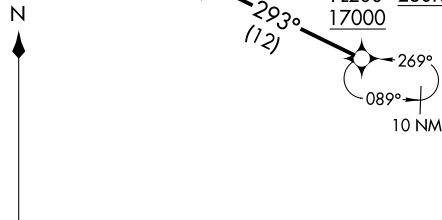


ARRIVAL ROUTE DESCRIPTION

From LINKK on track 293° to cross NNCEE at or below 15000, then on track 293° to cross KONZZ at 12000, then on track 293° to cross BEDLM at or above 10000 and at 250K.

LANDING RUNWAY 8L: From BEDLM on track 293° to cross CHKEN at or below 7000, then on track 280° to cross PRAYY at 6000, then on track 319° to cross GOVVV at 6000 and at 240K, then on track 267° to cross CASST at 6000 and at 210K, then on track 267°. Expect RADAR vectors to final approach course.

LANDING RUNWAYS 8R, 9: From BEDLM on track 293° to cross CHKEN at or below 7000, then on track 280° to cross PRAYY at 6000, then on track 267° to cross SMOCR, then on track 267° to cross SHIVV at 240K, then on track 267° to cross HOWLN at 6000 and at 210K, then on track 267°. Expect RADAR vectors to final approach course.



NOTE: Chart not to scale.

NNCEE TWO ARRIVAL (RNAV) Arrival Routes
 (LINKK, NNCEE2) 30NOV23
 GEORGE BUSH INTCONTL/HOUSTON (IAH)
 HOUSTON, TEXAS

(LINKK, NNCEE2) 23334
 NNCEE TWO ARRIVAL (RNAV) Arrival Routes
 AL-5461 (FAA)
 GEORGE BUSH INTCONTL/HOUSTON (IAH)
 HOUSTON, TEXAS