

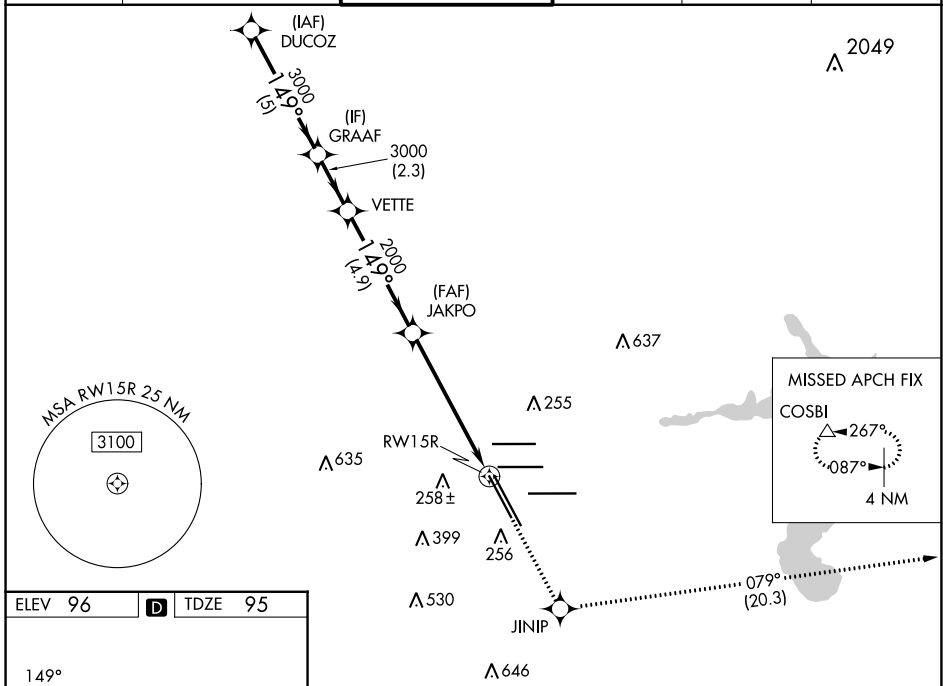
WAAS CH <b>97599</b>	APP CRS <b>149°</b>	Rwy Idg <b>10000</b>
<b>W15A</b>		TDZE <b>95</b>
		Apt Elev <b>96</b>

# RNAV (GPS) RWY 15R

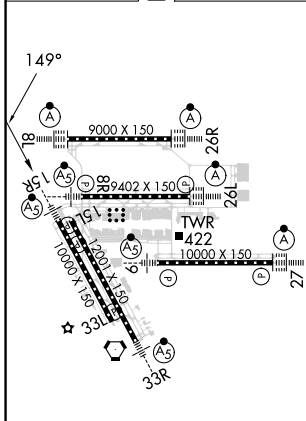
GEORGE BUSH INTCNL/HOUSTON (IAH)

RADAR required for procedure entry. RNP APCH.		MALSR	MISSED APPROACH: Climb to 2000 direct JINIP and left turn on track 079° to COSBI and hold.
<p><b>⚠</b> For uncompensated Baro-VNAV systems, LNAV/VNAV NA below -3°C or above 54°C. For inop ALS, increase LPV Cat E visibility to RVR 4000, LNAV/VNAV all Cats visibility to RVR 5500, and LNAV Cat C/D/E visibility to 1 3/8 SM.</p>			

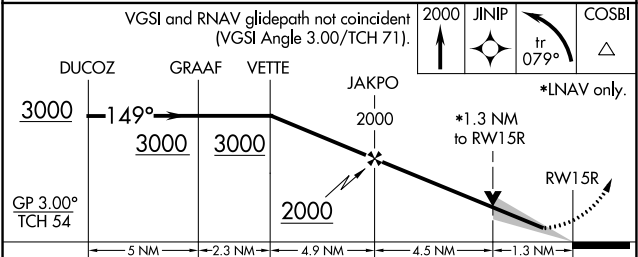
D-ATIS <b>124.05</b>	HOUSTON APP CON <b>120.05 379.1 EAST 124.35 316.15 WEST</b>	HOUSTON TOWER <b>127.3 288.25</b>	GND CON <b>121.7</b>	CLNC DEL <b>128.1</b>	CPDLC
----------------------	---	-----------------------------------	----------------------	-----------------------	-------



ELEV <b>96</b>	<b>D</b>	TDZE <b>95</b>
----------------	----------	----------------



TDZ/CL Rwy 8R, 8L, 15R, 26R, 26L, 27 and 33L  
HIRL all Rwy



CATEGORY	A	B	C	D	E
LPV DA		295/18	200 (200-1/2)		
LNAV/VNAV DA		460/35	365 (400-3/4)		
LNAV MDA	580/24	485 (500-1/2)		580/50	485 (500-1)

SC-5, 26 DEC 2024 to 23 JAN 2025

SC-5, 26 DEC 2024 to 23 JAN 2025