

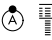
| | | |
|-------------|----------|-------------|
| APP CRS | Rwy Idg | 9402 |
| 267° | TDZE | 95 |
| | Apt Elev | 96 |

RNAV (RNP) Y RWY 26L

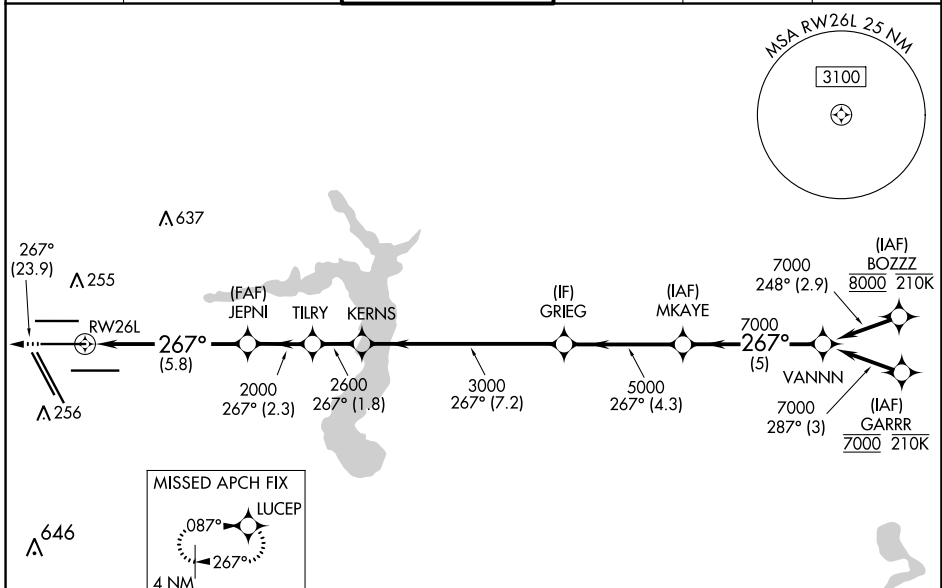
GEORGE BUSH INTCNL/HOUSTON (IAH)

RNP AR APCH - GPS.

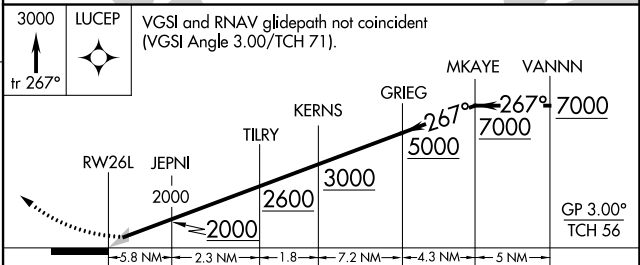
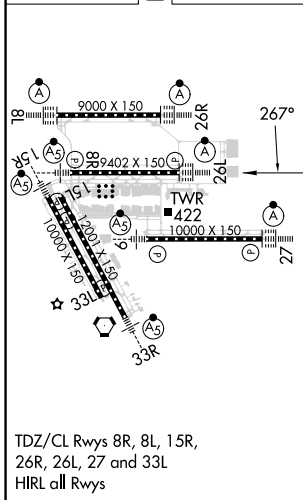
▼ For uncompensated Baro-VNAV systems, procedure NA below -3°C or above 54°C. Simultaneous approach authorized. For inop ALS, increase RNP 0.13 all Cats visibility to RVR 5100, and RNP 0.30 all Cats visibility to 1½ SM.

ALSF-2  MISSED APPROACH: Climb to 3000 on track 267° to LUCEP and hold.

| | | | | | |
|---------------|---|---------------------|----------------|--------------|-------|
| D-ATIS | HOUSTON APP CON | HOUSTON TOWER | GND CON | CLNC DEL | CPDLC |
| 124.05 | 120.05 379.1 EAST 124.35 316.15 WEST | 125.35 290.2 | 118.575 | 128.1 | |



| | | | | |
|------|-----------|----------|------|-----------|
| ELEV | 96 | D | TDZE | 95 |
|------|-----------|----------|------|-----------|



| | | | | |
|-------------|---|--------|-------------|---|
| CATEGORY | A | B | C | D |
| RNP 0.13 DA | | 414/40 | 319 (400-¾) | |
| RNP 0.30 DA | | 549/55 | 454 (500-1) | |

AUTHORIZATION REQUIRED