

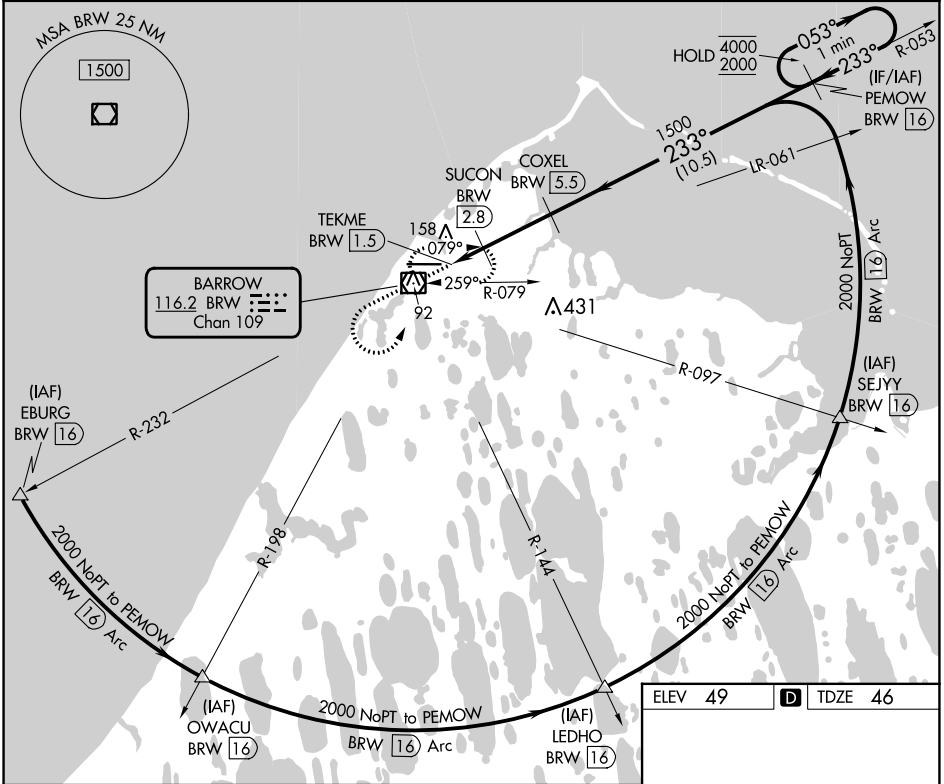
VOR/DME BRW 116.2 Chan 109	APP CRS 233°	Rwy Idg TDZE Apt Elev	5900 46 49
--	------------------------	-----------------------------	---------------------------------------

VOR RWY 26

WILEY POST-WILL ROGERS MEML (BRW)(PABR)

DME required.	MISSED APPROACH: Climb to 1600 then climbing left turn to 2000 direct BRW VOR/DME and hold, continue climb-in-hold to 2000.
<p>Circling NA for Cat A north of Rwy 8-26.</p>	

AFIS 132.15	ANCHORAGE CENTER 135.3 239.25	BARROW RADIO 123.6 (CTAF) 0
-----------------------	---	---------------------------------------



1600	2000	BRW	
TEKME BRW 1.5	SUCON BRW 2.8	COXEL BRW 5.5	PEMOW BRW 16
540	1500	4000	2000
0.4	0.6	0.7	2.7 NM
			10.5 NM
CATEGORY	A	B	C
S-26	420-1	374 (400-1)	
	420-1 371 (400-1)	500-1 451 (500-1)	500-1½ 451 (500-1½)
			680-2 631 (700-2)

ELEV 49		TDZE 46
REIL Rwy 26 0 HIRL Rwy 8-26 0		

AK, 26 DEC 2024 to 20 FEB 2025

AK, 26 DEC 2024 to 20 FEB 2025

VOR RWY 26