

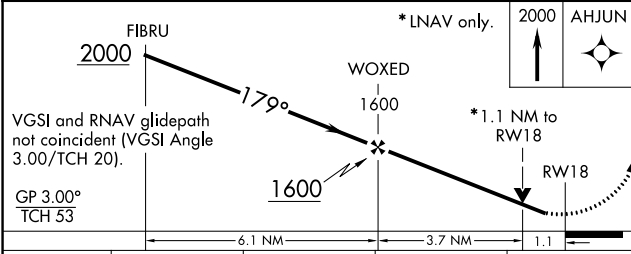
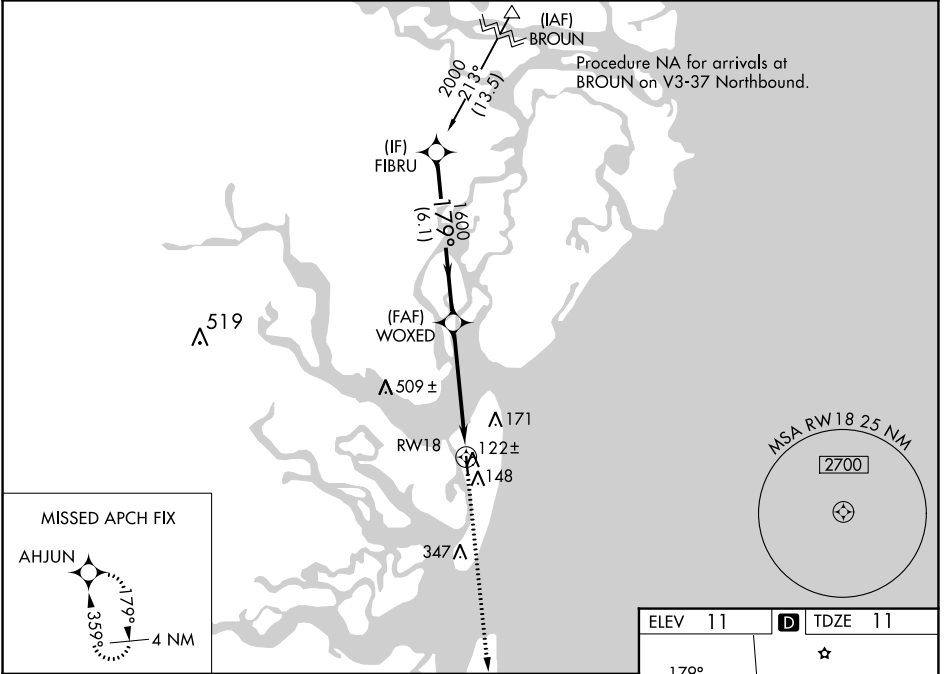
|  |                        |   |
|--|------------------------|---|
| WAAS<br>CH <b>61222</b><br><b>W18A</b> | APP CRS<br><b>179°</b> | Rwy Idg <b>3575</b><br>TDZE <b>11</b><br>Apt Elev <b>11</b> |
|--|------------------------|---|

# RNAV (GPS) RWY 18

JEKYLL ISLAND (Ø9J)

|          |   |   |
|----------|---|---|
| RNP APCH | <p>⚠ NA Circling Rwy 36 NA at night. Baro-VNAV NA. Use St Simons Island altimeter setting, when not received use Jacksonville Intl altimeter setting; increase LPV DA to 324 feet and LNAV/VNAV DA to 377 feet and all visibilities 1/2 SM; increase all MDAs 100 feet.</p> | MISSED APPROACH: Climb to 2000 direct AHJUN and hold. |
|----------|---|---|

|                                |  |                                  |
|--------------------------------|--|----------------------------------|
| SSI AWOS-3PT<br><b>120.025</b> | JACKSONVILLE CENTER<br><b>126.75 277.4</b> | UNICOM<br><b>123.05 (CTAF) Ø</b> |
|--------------------------------|--|----------------------------------|



|         |   |         |
|---------|---|---------|
| ELEV 11 | D | TDZE 11 |
|---------|---|---------|

Vertical profile diagram showing the descent path from 1790 ft to 81 ft (RWY18) and 36 ft (RWY36). The vertical distance is 3715 x 75.

| CATEGORY     | A       | B             | C | D  |
|--------------|---------|---------------|---|----|
| LPV DA       | 224-3/4 | 213 (300-3/4) |   | NA |
| LNAV/VNAV DA | 277-7/8 | 266 (300-7/8) |   | NA |
| LNAV MDA     | 400-1   | 389 (400-1)   |   | NA |
| CIRCLING     | 540-1   | 529 (600-1)   |   | NA |

SE-4, 26 DEC 2024 to 23 JAN 2025

SE-4, 26 DEC 2024 to 23 JAN 2025