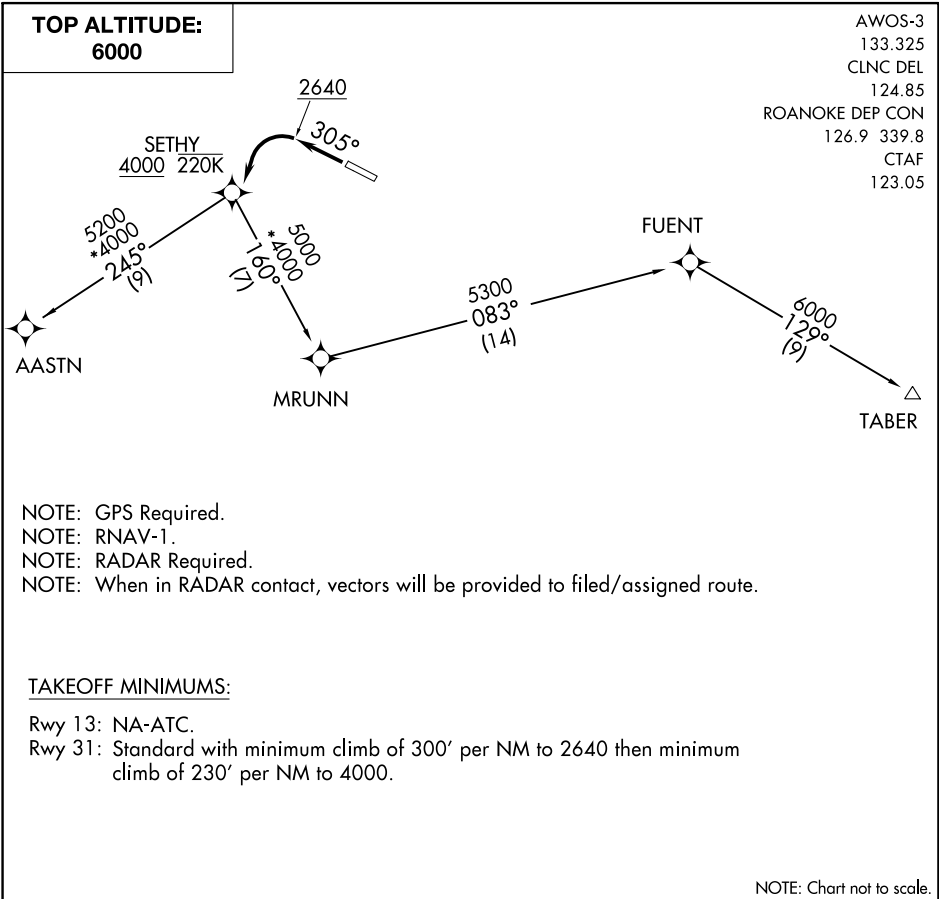


# SETHY FIVE DEPARTURE (RNAV)

BLACKSBURG, VIRGINIA



## DEPARTURE ROUTE DESCRIPTION

TAKEOFF RUNWAY 31: Climb heading 305° to 2640, then left turn direct SETHY, cross SETHY at or above 4000, thence....

....On TABER transition. Maintain 6000. Expect clearance to filed altitude/flight level 10 minutes after departure.

....On AASTN transition. At AASTN fly heading 245° or assigned by ATC. Maintain 6000. RADAR vectors will be provided to filed route. Expect clearance to filed altitude/flight level within ten minutes after departure.

AASTN TRANSITION (SETHY5.AASTN):  
TABER TRANSITION (SETHY5.TABER):