

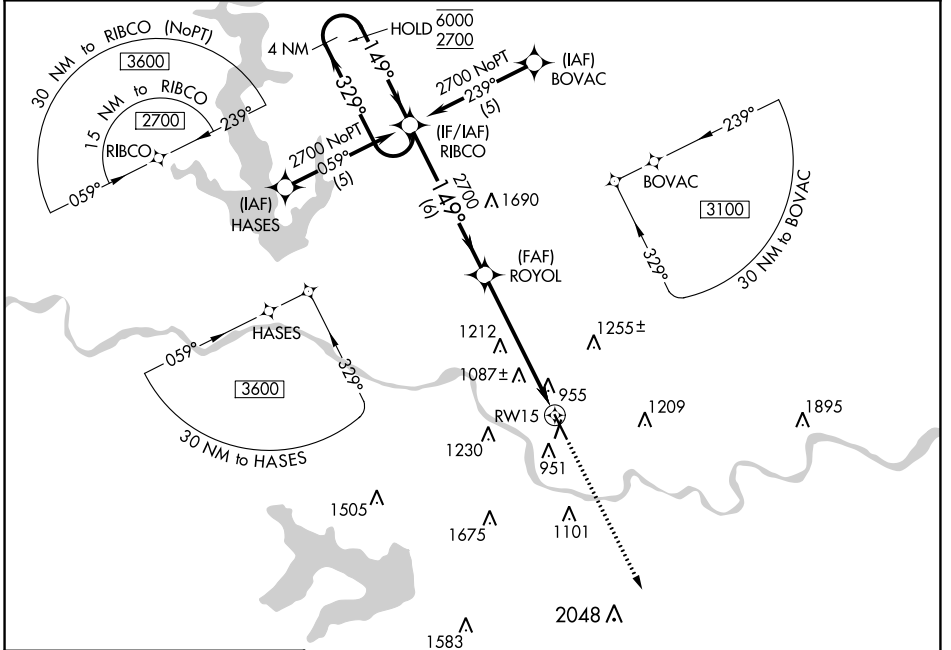
APP CRS	Rwy Idg	5700
149°	TDZE	831
	Apt Elev	833

RNAV (GPS) RWY 15

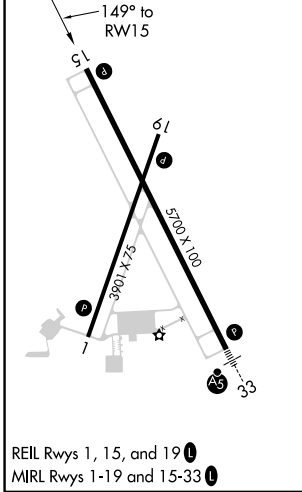
LAWRENCE RGNL (LWC)

RNP APCH.	MISSED APPROACH: Climb to 3100 direct GOLEY and hold.
Rwy 15 Helicopter visibility reduction below 3/4 SM NA.	

ASOS 121.225	KANSAS CITY CENTER 123.8 343.7	CLNC DEL 121.825	UNICOM 123.0 (CTAF) 0
------------------------	--	----------------------------	---------------------------------



ELEV 833	TDZE 831
----------	----------



REIL Rws 1, 15, and 19

MIRL Rws 1-19 and 15-33

4 NM Holding Pattern	6000	2700	2700	3100	GOLEY
	← 329°		→ 149°	↑	
	6 NM		4.2 NM	1.4	
CATEGORY	A	B	C	D	
LNAV MDA	1340-1	509 (600-1)	1340-1½ 509 (600-1½)	NA	
CIRCLING	1420-1 587 (600-1)	1480-1 647 (700-1)	1620-2¼ 787 (800-2¼)	NA	

NC-2, 26 DEC 2024 to 23 JAN 2025

NC-2, 26 DEC 2024 to 23 JAN 2025