

WAAS CH 93618 W02A	APP CRS 017°	Rwy Idg TDZE 372 Apt Elev 373
--	------------------------	---

RNAV (GPS) RWY 2

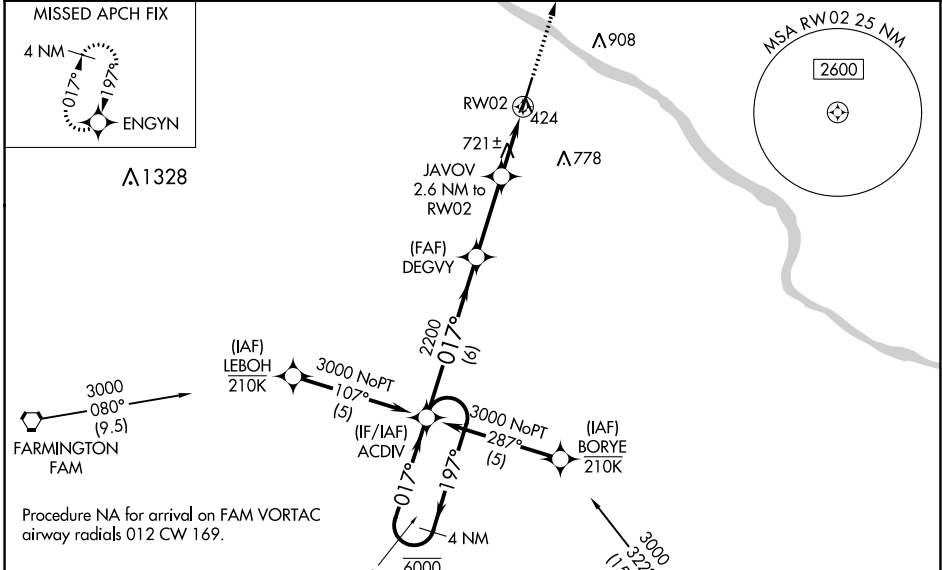
PERRYVILLE RGNL (PCD)

RNP APCH - GPS.

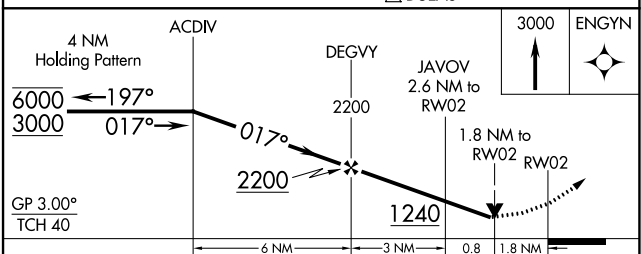
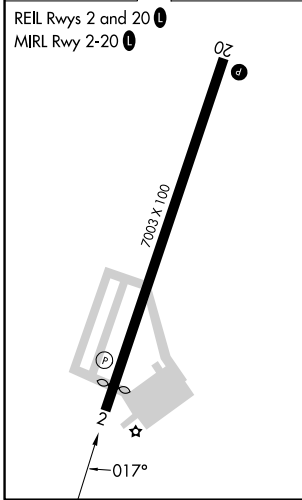
⚠ Rwy 2 helicopter visibility reduction below 3/4 SM NA. Baro-VNAV and VDP NA when using CGI altimeter setting. For uncompensated Baro-VNAV systems, LNAV/VNAV NA below -15°C or above 54°C. When local altimeter setting not received, use CGI altimeter setting and increase LPV DA to 1223 feet and all visibility 1/2 SM. Increase LNAV/VNAV DA to 1154 feet and all visibilities 1/2 SM. Increase all MDAs 100 feet and LNAV visibility Cat C/D 1/4 SM and Circling visibility Cat C 1/4 SM.

MISSED APPROACH: Climb to 3000 direct ENGYN and hold.

AWOS-3PT 118.95	KANSAS CITY CENTER 127.475 346.275	UNICOM 122.8 (CTAF) 0
---------------------------	--	---------------------------------



ELEV 373	D	TDZE 372
-----------------	----------	-----------------



CATEGORY	A	B	C	D
LPV DA		1123-2	751 (800-2)	
LNAV/VNAV DA		1054-2	682 (700-2)	
LNAV MDA	980-1	608 (700-1)	980-1 3/4	608 (700-1 3/4)
CIRCLING	980-1 607 (700-1)	1000-1 627 (700-1)	1260-2 3/4 887 (900-2 3/4)	1260-3 887 (900-3)

NC-3, 26 DEC 2024 to 23 JAN 2025

NC-3, 26 DEC 2024 to 23 JAN 2025