

WAAS CH <b>53418</b>	APP CRS <b>197°</b>	Rwy Idg TDZE <b>373</b>	<b>6483</b>
<b>W20A</b>		Apt Elev <b>373</b>	

# RNAV (GPS) RWY 20

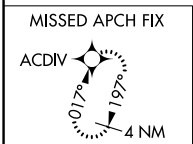
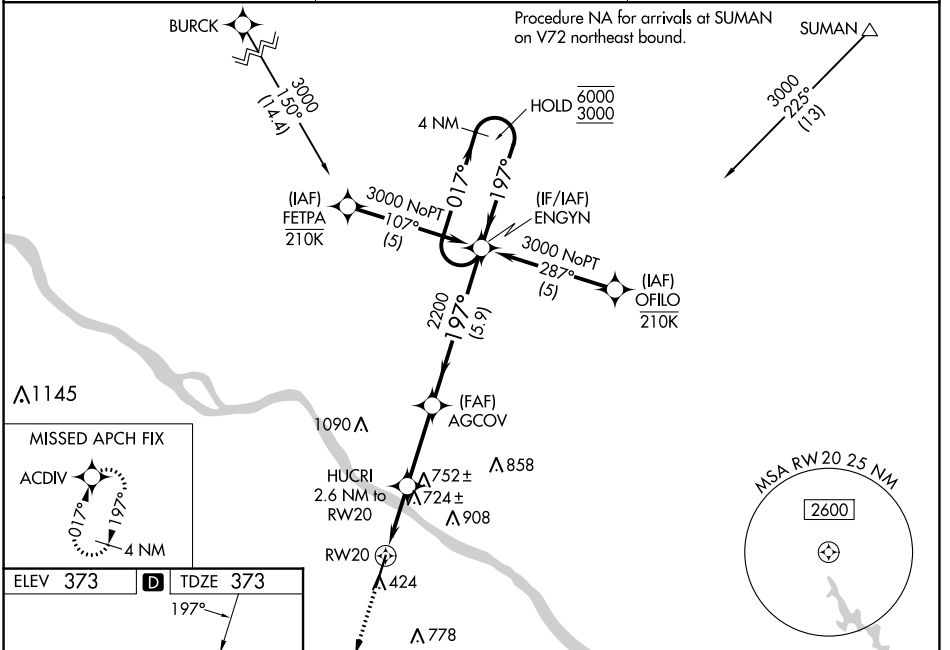
PERRYVILLE RGNL (PCD)

RNP APCH - GPS.

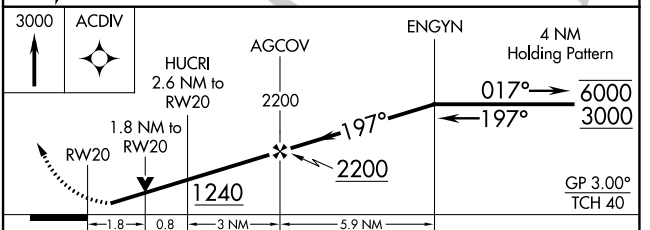
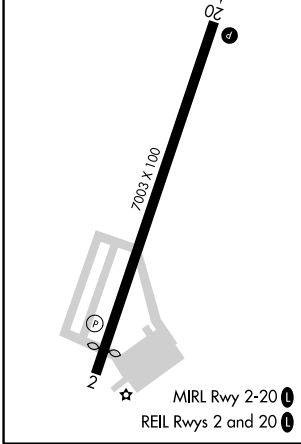
⚠ For uncompensated Baro-VNAV systems, LNAV/VNAV NA below -15°C or above 54°C. Baro-VNAV and VDP NA when using CGI altimeter setting. Rwy 20 helicopter visibility reduction below ¾ SM NA. When local altimeter setting not received, use CGI altimeter setting and increase LPV DA to 723 feet; increase LNAV/VNAV DA to 746 feet; increase all MDAs 100 feet and LNAV visibility Cat C/D ¼ SM, and Circling visibility Cat C ¼ SM.

MISSED APPROACH: Climb to 3000 direct ACDIV and hold.

AWOS-3PT <b>118.95</b>	KANSAS CITY CENTER <b>127.475 346.275</b>	UNICOM <b>122.8 (CTAF) 0</b>
---------------------------	--	---------------------------------



ELEV 373	<b>D</b>	TDZE 373
----------	----------	----------



CATEGORY	A	B	C	D
LPV DA		623-1	250 (300-1)	
LNAV/VNAV DA		646-1	273 (300-1)	
LNAV MDA	980-1	607 (700-1)	980-1¾	607 (700-1¾)
CIRCLING	980-1 607 (700-1)	1000-1 627 (700-1)	1260-2¾ 887 (900-2¾)	1260-3 887 (900-3)

NC-3, 26 DEC 2024 to 23 JAN 2025

NC-3, 26 DEC 2024 to 23 JAN 2025