

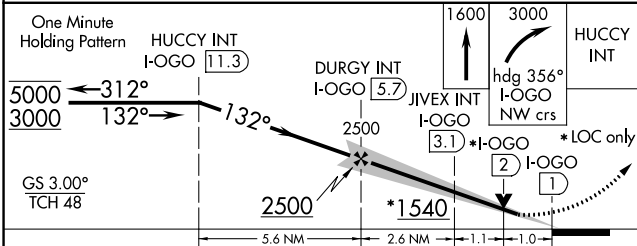
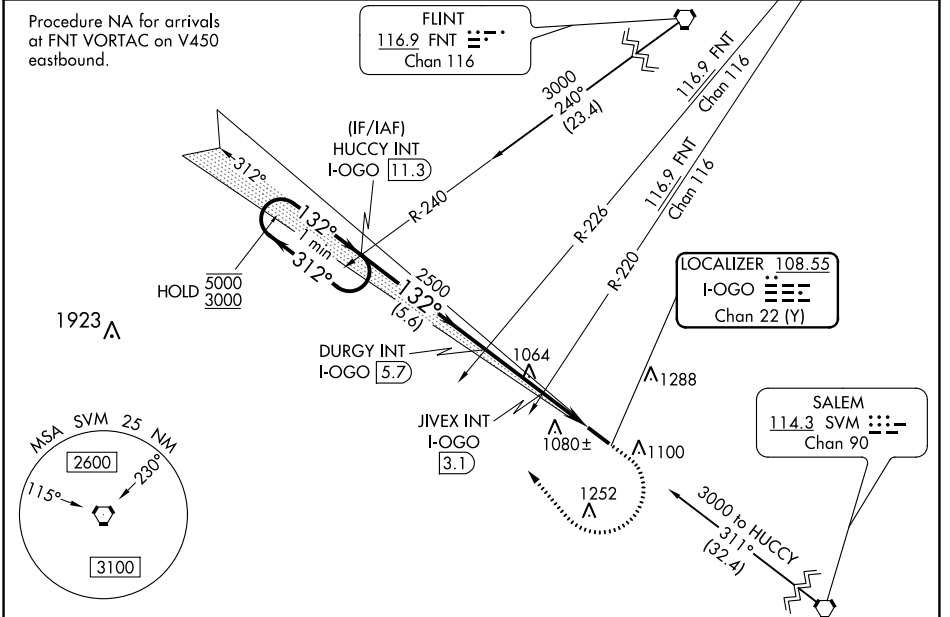
| | | |
|--|------------------------|---|
| LOC/DME I-OGO 108.55 Chan 22 (Y) | APP CRS 132° | Rwy ldg 5002 TDZE 962 Apt Elev 962 |
|--|------------------------|---|

ILS or LOC RWY 13

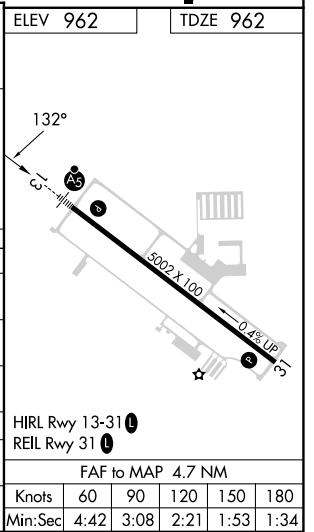
LIVINGSTON COUNTY SPENCER J HARDY (OZW)

| | | |
|--|---------------|--|
| <p>▼ For inop ALS, increase LOC Cat C and D visibility to 1½ SM, and JIVEX fix minimums S-13 Cat C and D visibility to 1 SM.</p> <p>▲ NA</p> | <p>MALSRL</p> | <p>MISSED APPROACH: Climb to 1600 then climbing right turn to 3000 heading 356° and I-OGO NW course to HUCCY INT/ I-OGO 11.3 DME and hold.</p> |
|--|---------------|--|

| | | | |
|--------------------------|--|----------------------------------|---------------------------------|
| AWOS-3 118.875 | DETROIT APP CON 132.35 284.0 | CLNC DEL 121.725 (GCO) | UNICOM 123.0 (CTAF) 0 |
|--------------------------|--|----------------------------------|---------------------------------|



| CATEGORY | A | B | C | D |
|---|---------------------------------------|---|---|---|
| S-ILS 13 | 1162-½ | | 200 (200-½) | |
| S-LOC 13 | 1540-½ 578 (600-½) | | 1540-1¼ 578 (600-1¼) | |
| CIRCLING | 1540-1 578 (600-1) | | 1600-1¾ 638 (700-1¾) 1600-2 638 (700-2) | |
| JIVEX FIX MINIMUMS (DUAL VOR RECEIVERS OR DME REQUIRED) | | | | |
| S-LOC 13 | 1320-½ 358 (400-½) | | 1320-5/8 358 (400-5/8) | |
| CIRCLING | 1400-1 438 (500-1) 1420-1 458 (500-1) | | 1600-1¾ 638 (700-1¾) 1600-2 638 (700-2) | |



ILS or LOC RWY 13

EC-1, 26 DEC 2024 to 23 JAN 2025

EC-1, 26 DEC 2024 to 23 JAN 2025